



Midtown Reliability Project

Visual Simulation Package

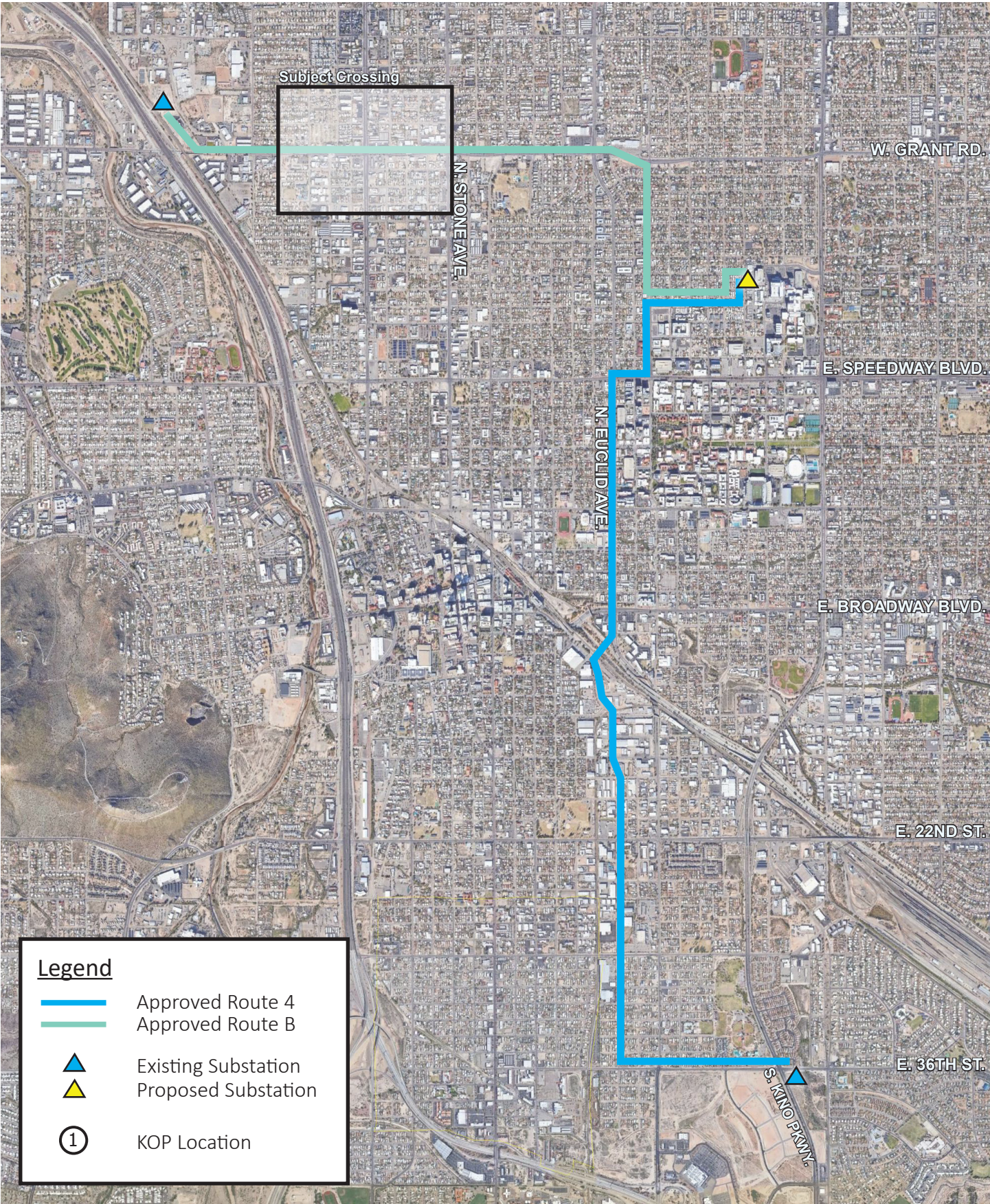
Approved Route 4B

W. Grant Rd./N. Oracle Rd.

Prepared By:
Jeremy Palmer | Sole Proprietor

September 30th, 2024

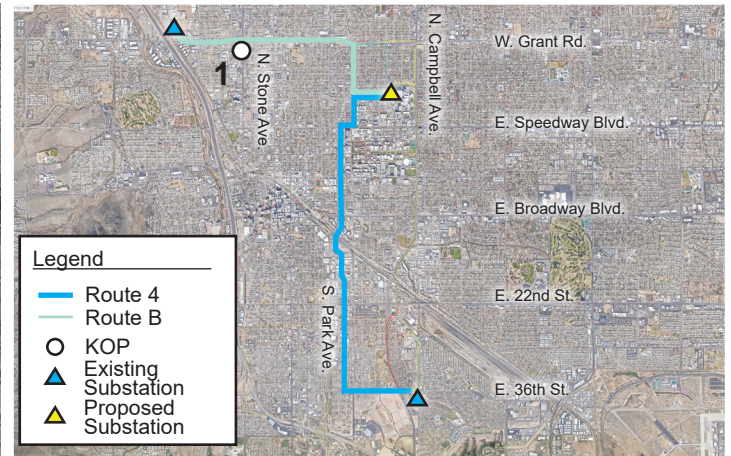
Midtown Reliability Project
Key Observation Point (KOP) - Key Map



Midtown Reliability Project
Key Observation Point (KOP) - Key Map



Key Observation Point (KOP) # 1



Notes:

Camera Information

- Type: Canon EOS RP
- Sensor: CMOS (Full-Frame) 35.9mm x 24mm
- Lens: Canon RF 24-105mm f/4-7.1 IS STM
- Focal Length: 24mm | F-Stop: f/9 | ISO:100
- Dimensions in pixel: 6240 x 4160

KOP

- Representative View for: Commercial and Residential
- Location: 2321 N. Oracle Rd.
- Latitude: 32°14'58.12"N; Longitude:110°58'40.21"W
- View Point Elevation at Eye Level: 2,365 ft.
- Looking: north
- Poles Visible: Alternative B structures
- Image File Name: IMG_4288.JPG

Simulation Notes

- Photo Taken: September 21, 2024 at 12:11 pm
- The image is based on a single photo and represent approximately 73.7 degree horizontal field of view.
- This view is approximately 276 feet south of the nearest pole represented in the simulation.
- The simulation is based on the best information available and is preliminary. Final alignment and structure locations are subject to change based on final engineering and other factors.

Key Observation Point (KOP) #1



Current Condition



Simulated Condition

Route B - Weathered Finish

Key Observation Point (KOP) #1



Current Condition



Simulated Condition

Route B - Galvanized Finish

Key Observation Point (KOP) #1



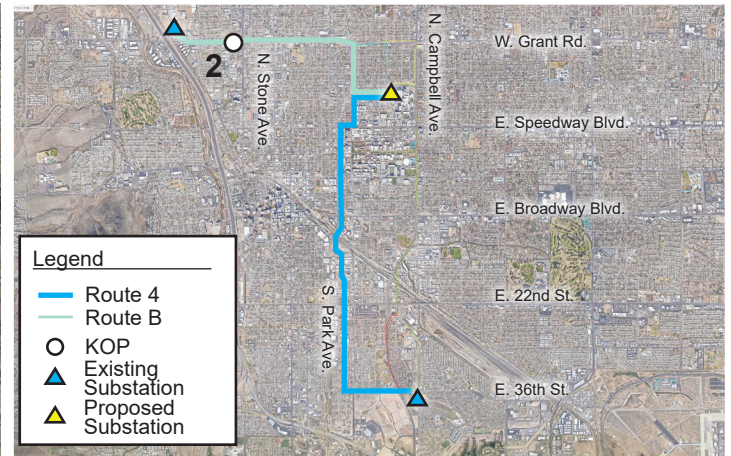
Current Condition



Simulated Condition

Route B - Mojave Sage Finish

Key Observation Point (KOP) # 2



Notes:

Camera Information

- Type: Canon EOS RP
- Sensor: CMOS (Full-Frame) 35.9mm x 24mm
- Lens: Canon RF 24-105mm f/4-7.1 IS STM
- Focal Length: 24mm | F-Stop: f/9 | ISO:100
- Dimensions in pixel: 6240 x 4160

KOP

- Representative View for: Commercial and Residential
- Location: 475 W. Grant Rd.
- Latitude: 32°15'0.14"N; Longitude: 110°58'44.34"W
- View Point Elevation at Eye Level: 2,360 ft.
- Looking: east
- Poles Visible: Alternative B structures
- Image File Name: IMG_4373.JPG

Simulation Notes

- Photo Taken: September 21, 2024 at 12:26 pm
- The image is based on a single photo and represent approximately 73.7 degree horizontal field of view.
- This view is approximately 519 feet west of the nearest pole represented in the simulation.
- The simulation is based on the best information available and is preliminary. Final alignment and structure locations are subject to change based on final engineering and other factors.

Key Observation Point (KOP) #2



Current Condition



Simulated Condition

Route B - Weathered Finish

Key Observation Point (KOP) #2



Current Condition



Simulated Condition

Route B - Galvanized Finish

Key Observation Point (KOP) #2

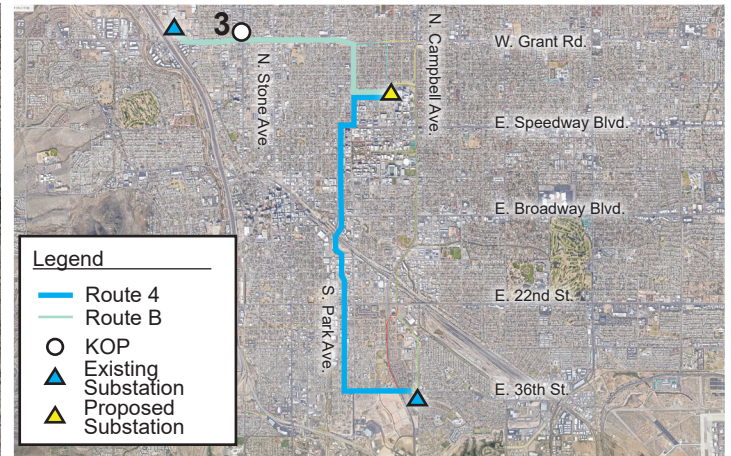


Current Condition



Simulated Condition

Key Observation Point (KOP) # 3



Notes:

Camera Information

- Type: Canon EOS RP
- Sensor: CMOS (Full-Frame) 35.9mm x 24mm
- Lens: Canon RF 24-105mm f/4-7.1 IS STM
- Focal Length: 24mm | F-Stop: f/10 | ISO:100
- Dimensions in pixel: 6240 x 4160

KOP

- Representative View for: Commercial and Residential
- Location: 2421 N. Oracle Rd.
- Latitude: 32°15'3.48"N; Longitude: 110°58'41.83"W
- View Point Elevation at Eye Level: 2,364 ft.
- Looking: south
- Poles Visible: Alternative B structures
- Image File Name: IMG_4365.JPG

Simulation Notes

- Photo Taken: September 21, 2024 at 12:22 pm
- The image is based on a single photo and represent approximately 73.7 degree horizontal field of view.
- This view is approximately 432 feet northwest of the nearest pole represented in the simulation.
- The simulation is based on the best information available and is preliminary. Final alignment and structure locations are subject to change based on final engineering and other factors.

Key Observation Point (KOP) #3



Current Condition



Simulated Condition

Route B - Weathered Finish

Key Observation Point (KOP) #3



Current Condition



Simulated Condition

Route B - Galvanized Finish

Key Observation Point (KOP) #3

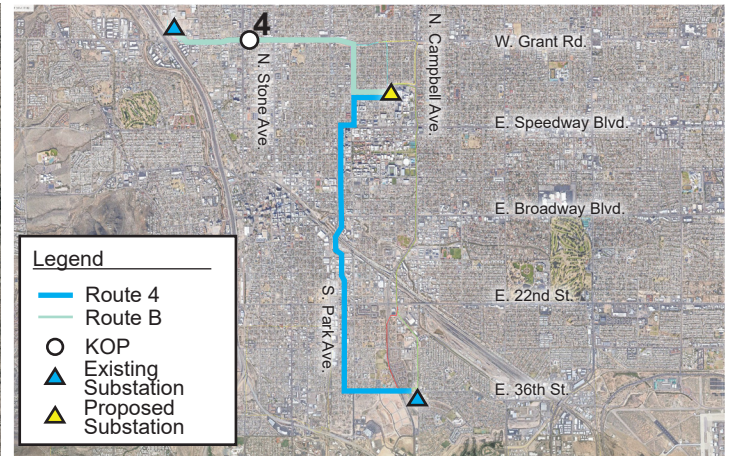


Current Condition



Simulated Condition

Key Observation Point (KOP) # 4



Notes:

Camera Information

- Type: Canon EOS RP
- Sensor: CMOS (Full-Frame) 35.9mm x 24mm
- Lens: Canon RF 24-105mm f/4-7.1 IS STM
- Focal Length: 24mm | F-Stop: f/9 | ISO:100
- Dimensions in pixel: 6240 x 4160

KOP

- Representative View for: Commercial and Residential
- Location: 332 W. Grant Rd.
- Latitude: 32°15'3.48"N; Longitude: 110°58'41.83"W
- View Point Elevation at Eye Level: 2,363 ft.
- Looking: west
- Poles Visible: Alternative B structures
- Image File Name: IMG_4340.JPG

Simulation Notes

- Photo Taken: September 21, 2024 at 12:18 pm
- The image is based on a single photo and represent approximately 73.7 degree horizontal field of view.
- This view is approximately 546 feet east of the nearest pole represented in the simulation.
- The simulation is based on the best information available and is preliminary. Final alignment and structure locations are subject to change based on final engineering and other factors.

Key Observation Point (KOP) #4



Current Condition



Simulated Condition

Route B - Weathered Finish

Key Observation Point (KOP) #4



Current Condition



Simulated Condition

Route B - Galvanized Finish

Key Observation Point (KOP) #4



Current Condition



Simulated Condition