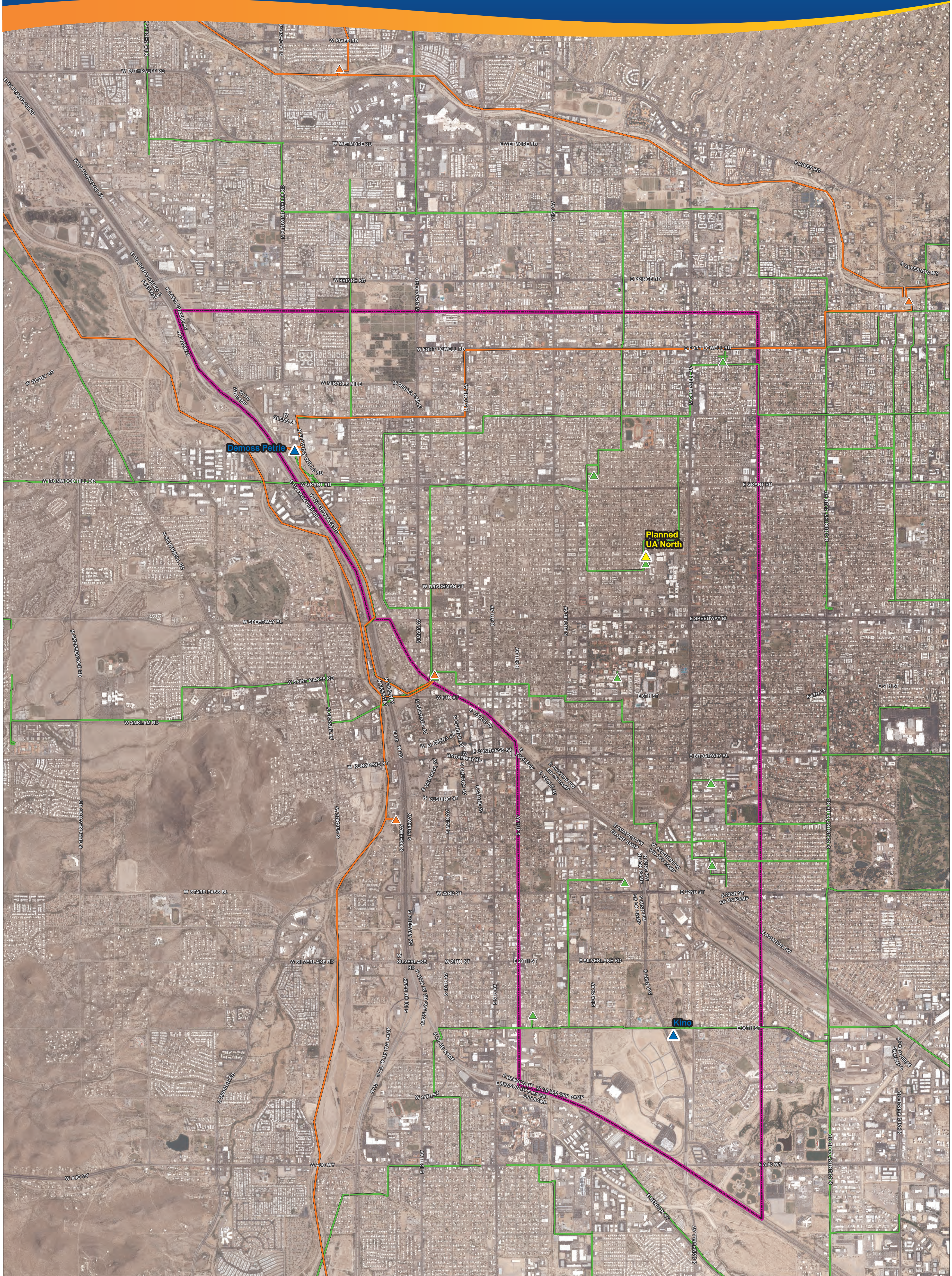
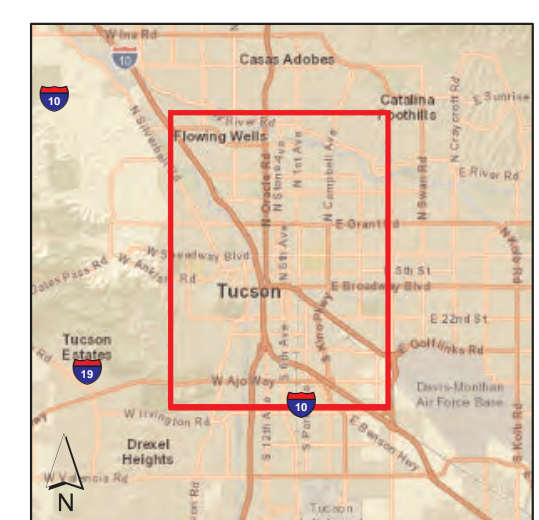
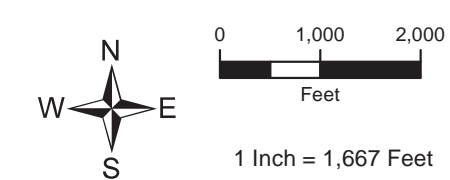


Kino to DeMoss-Petrie Transmission Line Project



Kino to DeMoss Petrie 138kV Transmission Line Preliminary Study Area

- ▲ Planned UA North Substation
- ▲ Kino and DMP Substations
- ▲ Existing 138kV Substation
- ▲ Existing 46kV Substation
- Existing 138kV Transmission
- Existing 46kV Subtransmission
- Preliminary Study Area



Sources: ESRI, TEP, UNS, and Pima County GIS.
Projection: NAD 1983 UTM Zone 12N
Basemap: PNG Imagery 2016

This map is for planning purposes only. TEP and UNS Energy make no warranty of its accuracy.