

Aerospace Research Campus Transmission Project



Please Join Us Public Open House Meeting

Thursday, July 27 | 6-8 p.m.
Desert Diamond Casino
Conference Room A
7350 S. Nogales Hwy
Tucson, AZ 85756

tep.com/aerospace-research-campus



Energy Grid Improvements

TEP is preparing plans for new transmission facilities at the Aerospace Research Campus that will support economic development and job creation in our community.

TEP Plans for New Transmission Facilities to Support Economic Development, Job Creation

Tucson Electric Power (TEP) is preparing plans for new transmission facilities that will increase energy capacity at the Aerospace Research Campus, a 500-acre business campus run by Pima County, supporting economic development and new jobs in our community.

The Aerospace Research Campus Transmission Project will interconnect TEP's existing 138 kilovolt (kV) transmission system to the proposed Franco Wash Switchyard, located south of the Tucson International Airport. This upgrade to TEP's local energy grid will support new aerospace development and other supply chain industries planned for the campus without impacting the reliability of service to other customers in the area.

The transmission line will be built over an approximately 1.5-mile area, extending service to the proposed switchyard.

Public input is an important part of TEP's planning process. We encourage area residents and other stakeholders to share their comments using one of the public participation methods listed in this newsletter.

Project Benefits

- **Service for growing energy needs.** New infrastructure will help meet customers' current and future energy needs. The new line will tie into TEP's 138 kV transmission system to accommodate increasing energy demands.
- **Support for job growth and economic development.** TEP works closely with

commercial customers to support their electric needs. New transmission facilities will support new commercial businesses at the Aerospace Research Campus, including American Battery Factory's planned headquarters and first battery cell gigafactory in the United States. The factory, which will be located south of South Raytheon and South Aerospace parkways, will produce lithium iron phosphate battery cells and has long-term plans to add 1,000 jobs to the region.

Planning and Siting Process

Identifying a suitable location for new transmission facilities involves several phases, each informed by public input. Area residents and other stakeholders can provide local insight to help identify opportunities and constraints, areas to avoid and specific route segments.

Stakeholders play a crucial role in helping TEP to evaluate and prioritize the importance of the criteria used to assess potential routes. TEP will use the criteria to evaluate and rank each potential route segment, ultimately developing a preferred transmission line route.

Under state law, potential routes must be evaluated using the criteria listed in this newsletter. However, TEP also can consider additional criteria such as local community values when assessing potential segments.

TEP welcomes your comments about the criteria listed in the graphic, and about additional criteria we should consider throughout the route selection process.

Evaluation Criteria

1. Impact on existing and planned land uses by state, local and private entities
2. Impact on fish, wildlife, and plants
3. Impact on special status species and their habitat
4. Proximity to sensitive noise receptors (schools, hospitals, assisted living and daycare facilities)
5. Proximity to licensed communication sites
6. Impact on designated scenic areas
7. Impact on historic and archaeological sites
8. Overall environmental impact
9. Ability to construct and maintain facilities
10. Cost
11. Compliance with state, county or city ordinances

Arizona Power Plant and Transmission Line Siting Committee, which reviews CEC applications in a public process that allows neighbors and other stakeholders to provide comments. The Arizona Corporation Commission must review and approve the CEC before TEP can begin construction.

Public Participation

TEP invites the public to attend the open house meeting listed on the front of this newsletter to ask questions and submit comments about the project. You can also share your input by:

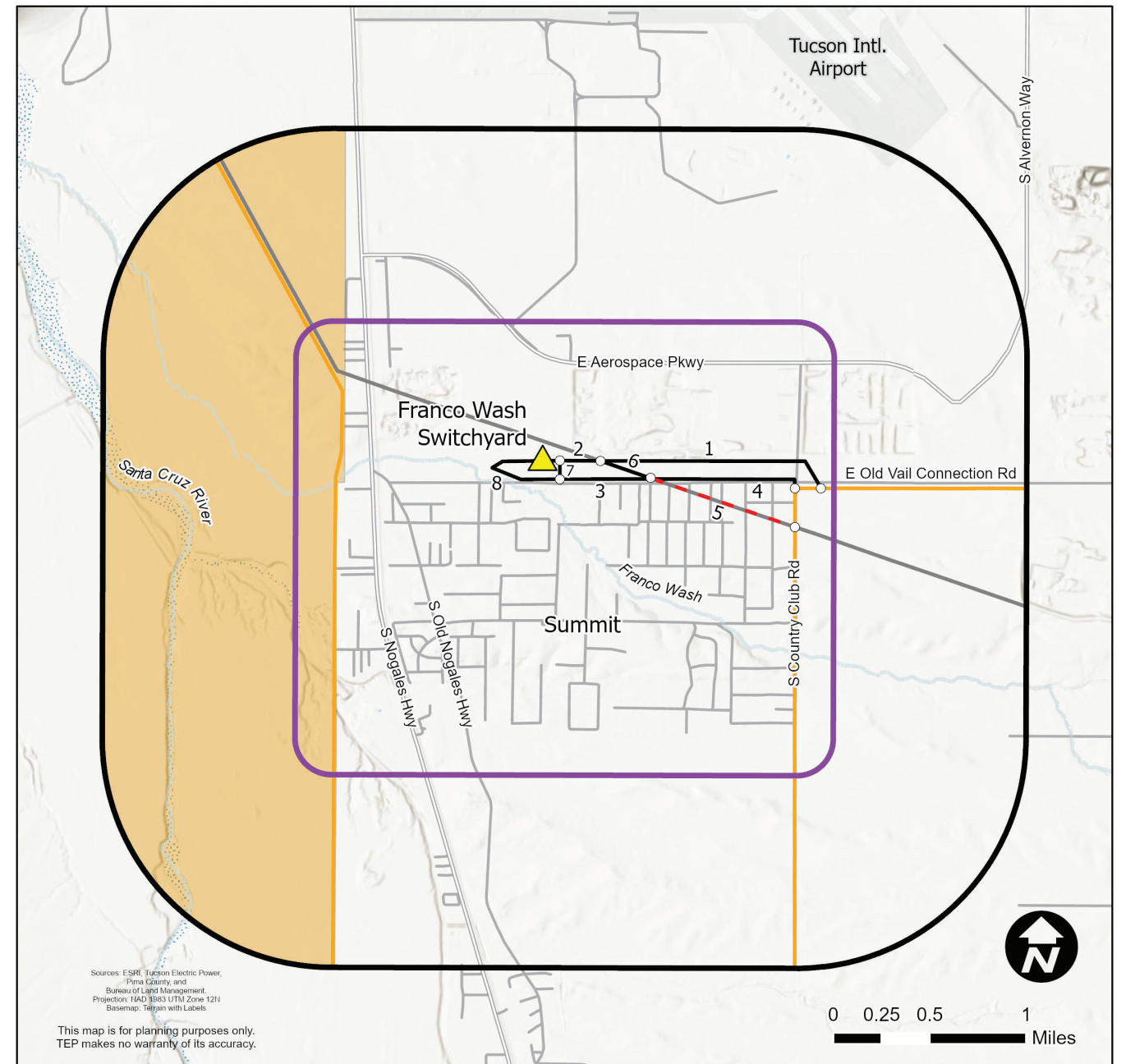
- Mailing a letter with comments to:
P.O. Box 711
ATTN: Aerospace Research Campus
Mail Stop CB200
Tucson, AZ 85701-0711
- Sending comments to arc@tep.com
- Filling out an online comment form at tep.com/aerospace-research-campus
- Calling 1-833-655-0399 and leaving a voicemail message

An interactive map will be posted on our website.

Required Approvals and Timeline

Under state law, TEP must secure a Certificate of Environmental Compatibility (CEC) to build the transmission line and switchyard. TEP plans to file a CEC application in fall 2023 with the

Tucson Electric Power (TEP) está haciendo planes para nuevas instalaciones de transmisión que aumentarán la capacidad de energía en el Aerospace Research Campus, y apoyarán el desarrollo económico y la creación de nuevos puestos de trabajo en nuestra comunidad. TEP invita al público en general a asistir a la próxima reunión abierta que aparece en el frente de este boletín informativo para hacer preguntas y presentar comentarios sobre el proyecto. Alentamos a los vecinos, propietarios y otros a compartir sus opiniones y comentarios rellenando un formulario de comentarios en línea, enviando un correo electrónico a arc@tep.com o llamando al 1-833-655-0399. Gracias por su interés en este proyecto.



Preliminary Segments

Aerospace Research Campus Transmission Project



Legend

- Study Area
- Notification Area
- Segment Under Consideration
- Eliminated Segment
- ▲ Proposed Switchyard
- Existing 138kV Line (TEP)
- Existing 115kV Line (WAPA)
- San Xavier District, Tohono O'odham Nation

