



SANTA RITA CONNECTION

AGENCY BRIEFING

Chris Ortiz y Pino – Project Manager - Siting, Outreach, & Engagement

November 2025



Agencies

Please type into the chat:

- Name
- Organization
- Title/Role

- Federal Agencies
- State Agencies
- Pima County
- City of Tucson
- Town of Sahuarita
- Tucson Airport Authority
- Telecommunication & Utility Companies
- Sunnyside Unified School District
- Sahuarita Unified School District

Agenda

- 1** How Power Gets to you

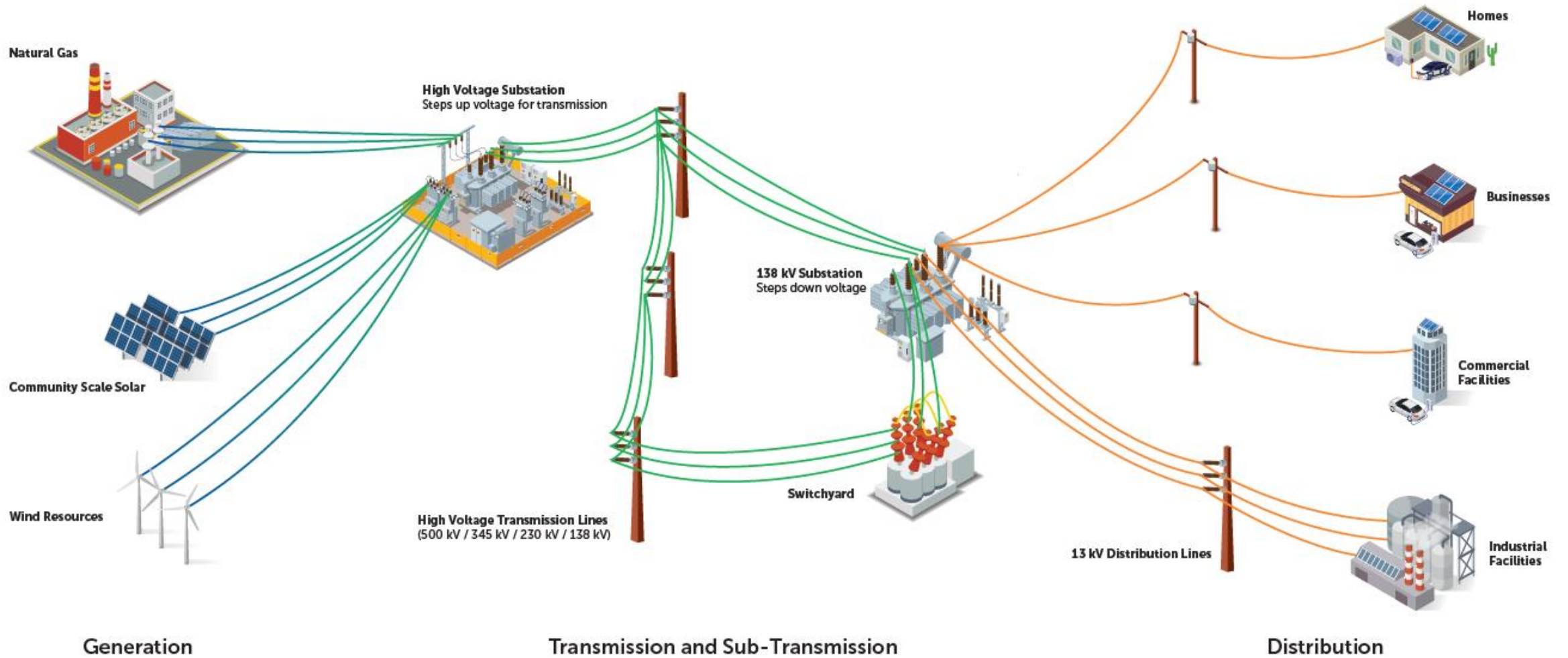
- 2** Project Description, Purpose, and Need

- 3** Overview of Planning and Siting Process

- 4** Opportunities, Constraints, & preliminary Segments

- 5** Required Approvals & Timeline

How Power Gets to You

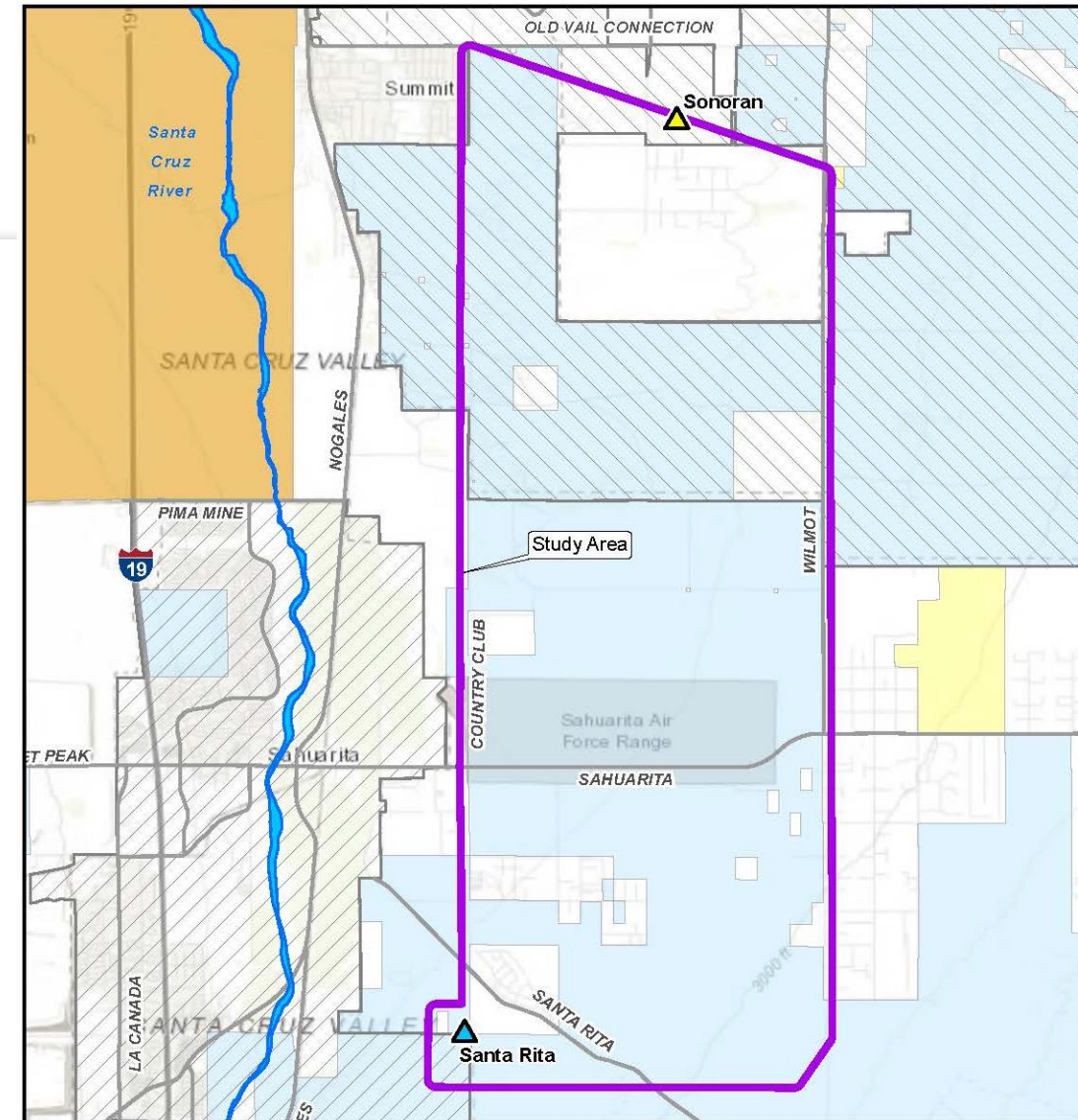


Santa Rita Connection

A new transmission line from the existing Sonoran Substation to the planned Santa Rita Substation.

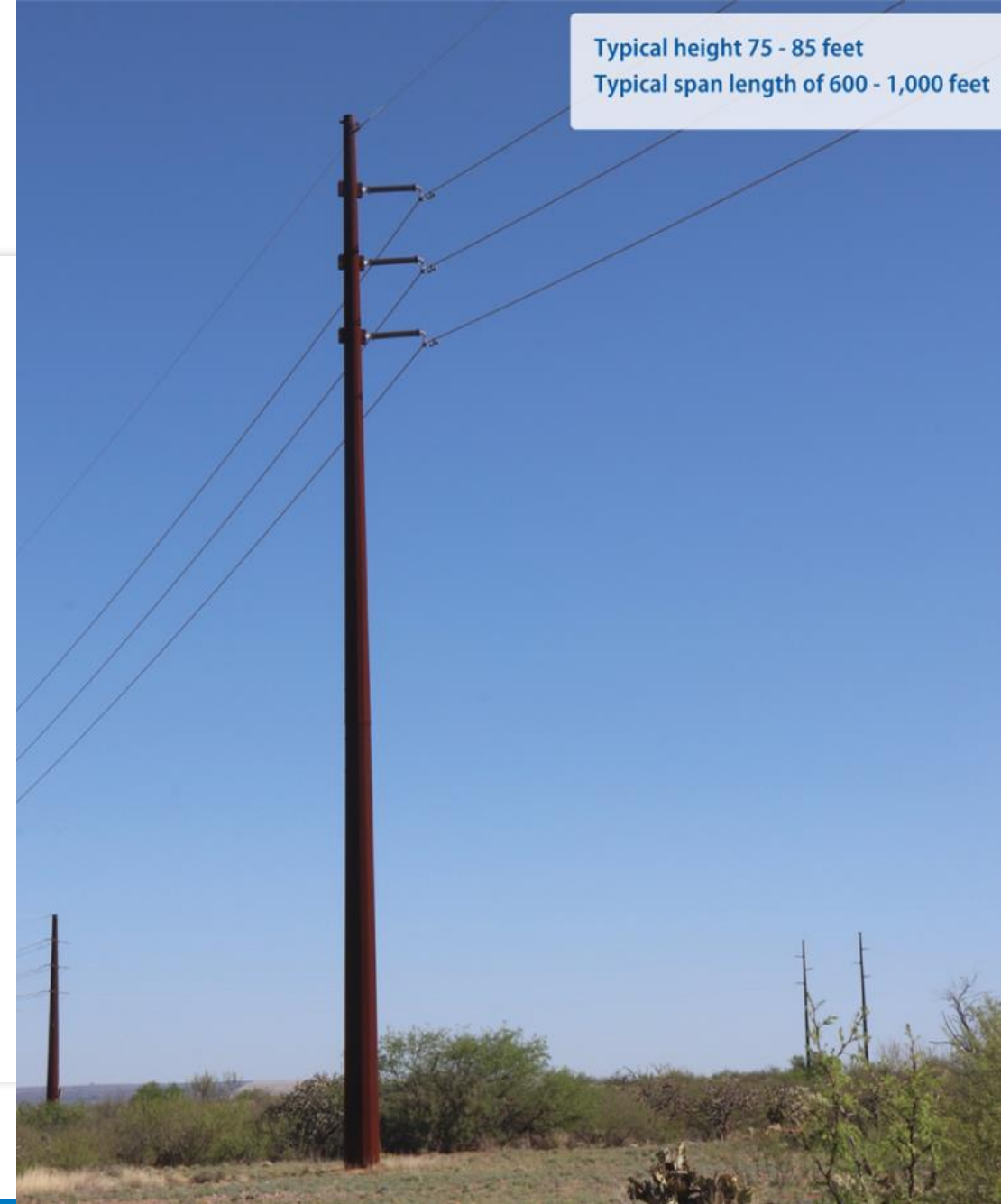
Purpose and Need

- To accommodate future load growth in the area south of Tucson
- Enhance the regional grid providing redundancy and stability
- Provide greater capacity to help meet the current and future energy needs of the community



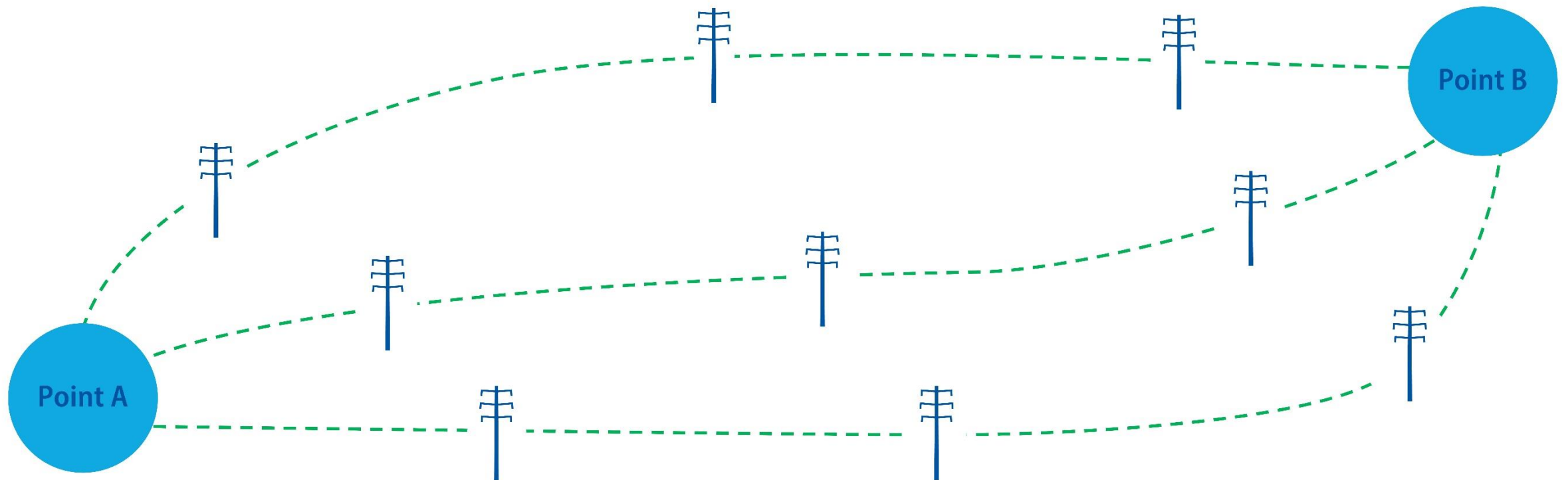
Example Pole Structure

- Tubular
- Weathering Steel
- Monopoles

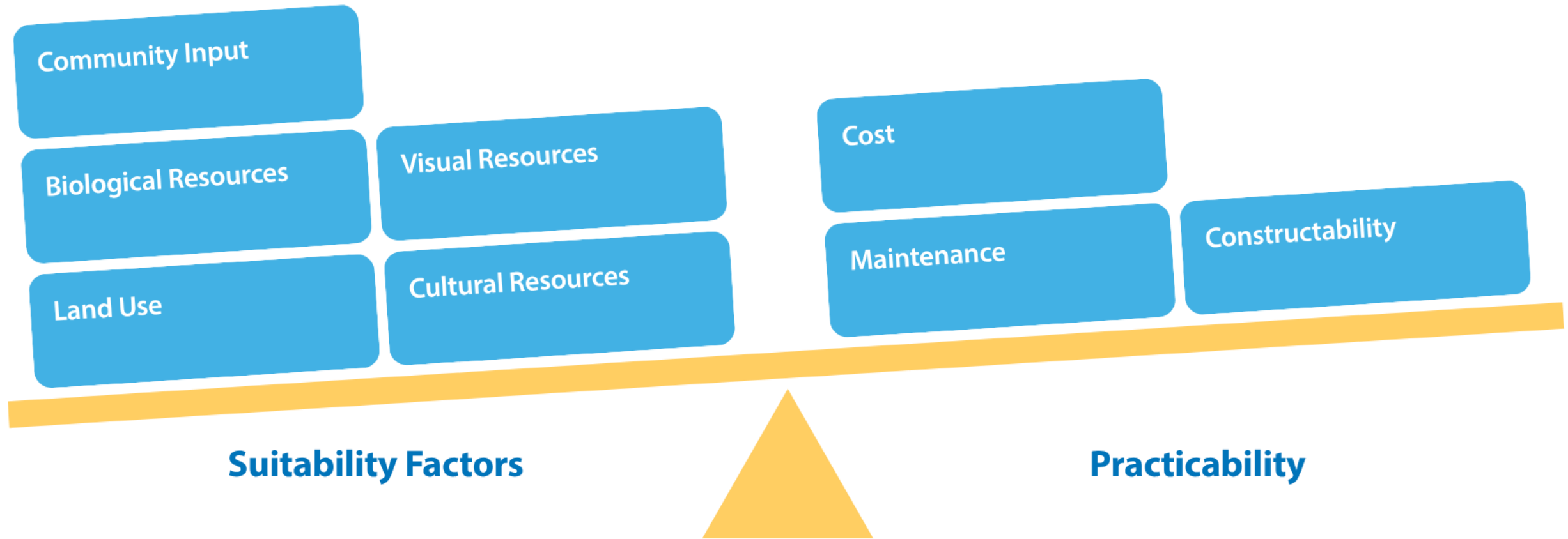


Typical height 75 - 85 feet
Typical span length of 600 - 1,000 feet

What is Siting?



Project Route Development & Evaluation



Planning & Siting Process Flowchart

Phase 1: Pre-Analysis



- Conduct Field Visits
- Develop Study Area
- Identify Opportunities and Constraints
- Conduct Public and Stakeholder Outreach
- Develop Preliminary Segments

Phase 2: Data Inventory

- Conduct Research and Collect Data

Phase 3: Suitability Assessment

- Develop Suitability Models
- Conduct Suitability Assessment
- Field Review
- Public and Stakeholder Outreach
- Refine Segments

Phase 4: Compatibility Analysis

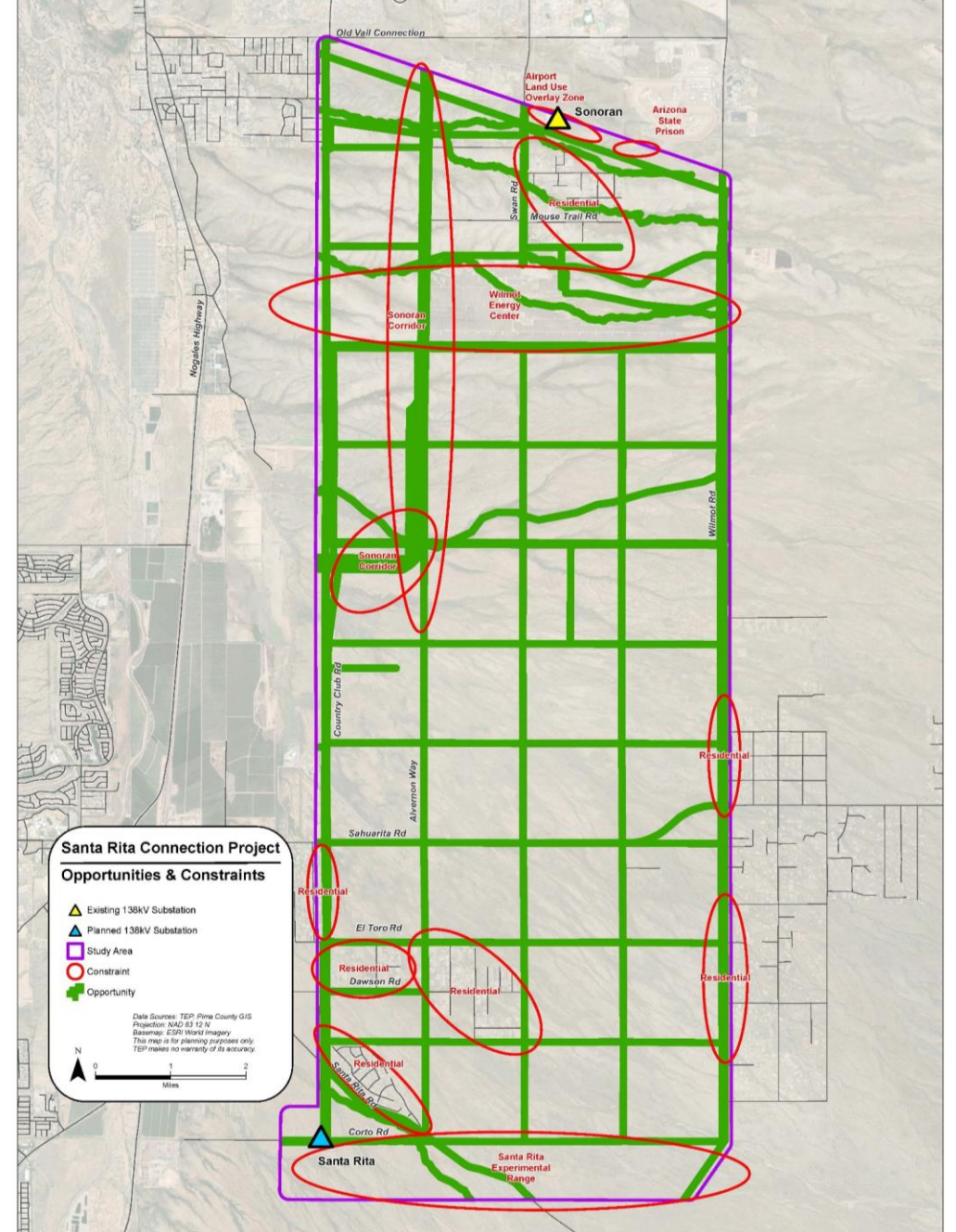
- Conduct Compatibility Analysis
- Develop Route Alternatives
- Field Review

Phase 5: Concept Evaluation

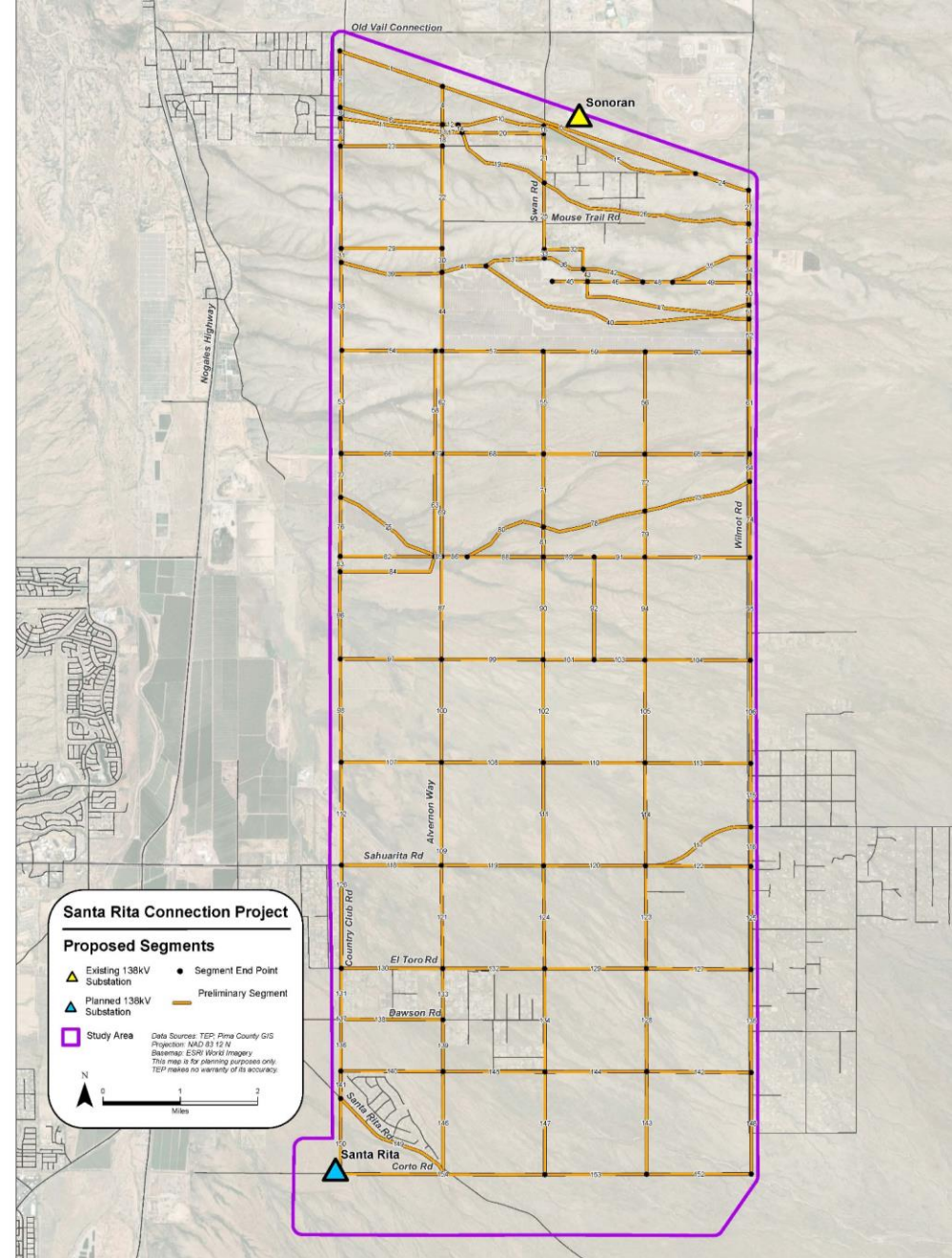
- Public and Stakeholder Outreach
- Identify Preferred Route
- Submit CEC Application
- Public Notification and Hearing

Opportunities & Constraints

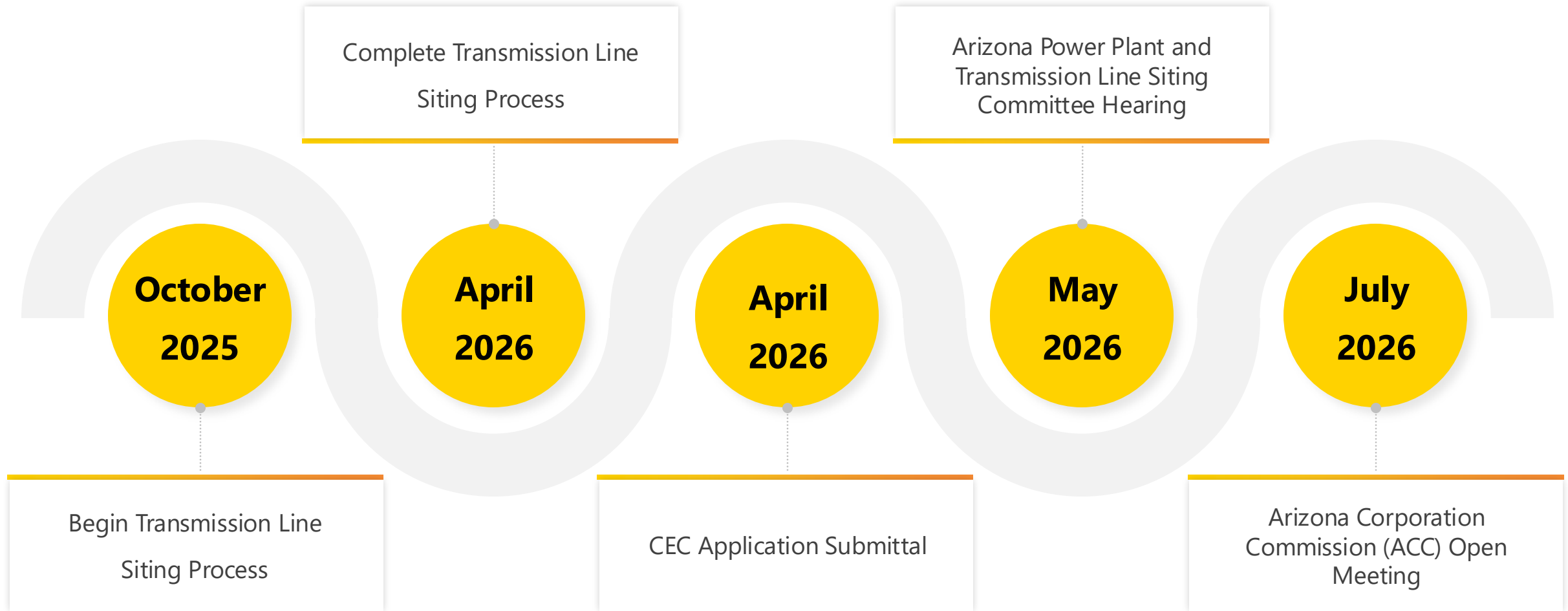
- Opportunities are linear features like roadways, washes, and existing utility corridors within the study area.
- Constraints represent areas that may be less compatible with a transmission line making it more challenging to construct and maintain.



Preliminary Segments



Project Schedule



Santa Rita Connection projected in service date 2029
(In service date subject to change)



Public Open House

November 13, 2025

6:00 – 8:00pm

Desert Diamond Casino - Sahuarita

1100 W Pima Mine Road

Sahuarita, AZ 85629





Q&A Session

**Please use the raise hand feature in MS Teams
or
Type your question into the chat**