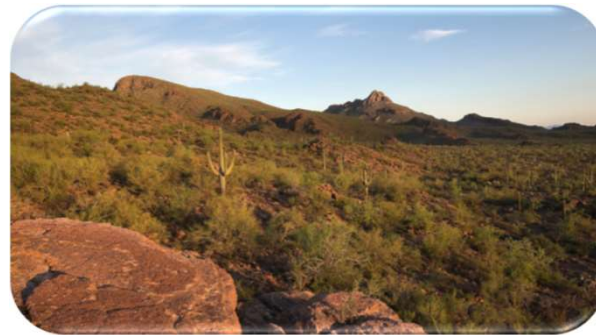


Northwest Marana Reliability Project

ADRIANA MARIÑEZ

SITING, OUTREACH, AND ENGAGEMENT PROJECT MANAGER



Tucson Electric Power

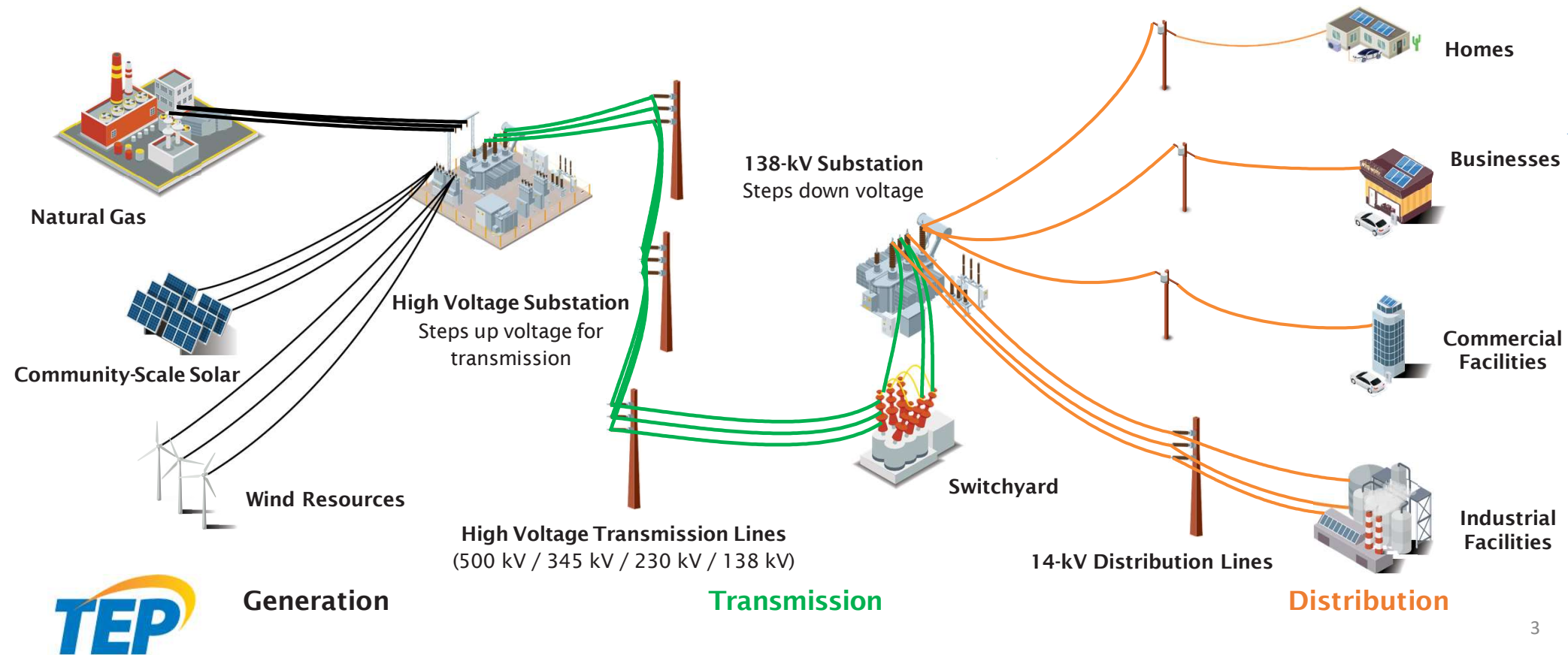
Agenda

- Introductions
- How We Deliver Electric Service to You
- Study Area
- Need and Benefits
- About the Project / Aesthetics
- Transmission Line Siting Process
- Evaluation Criteria
- Opportunities and Constraints
- Timeline
- Public Participation
- Questions

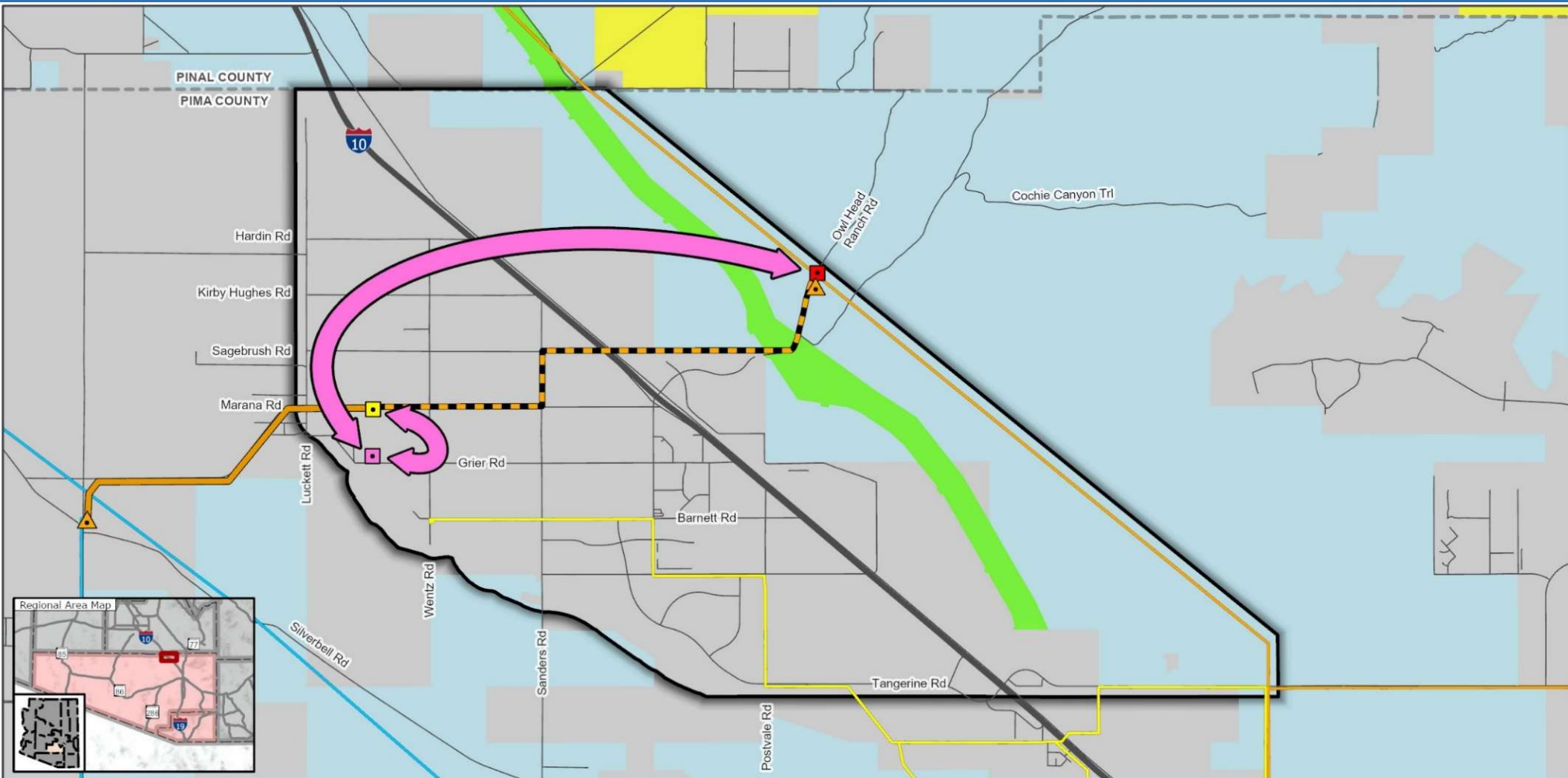


Our Energy Grid

How we deliver electric service to you



Conceptual Connections

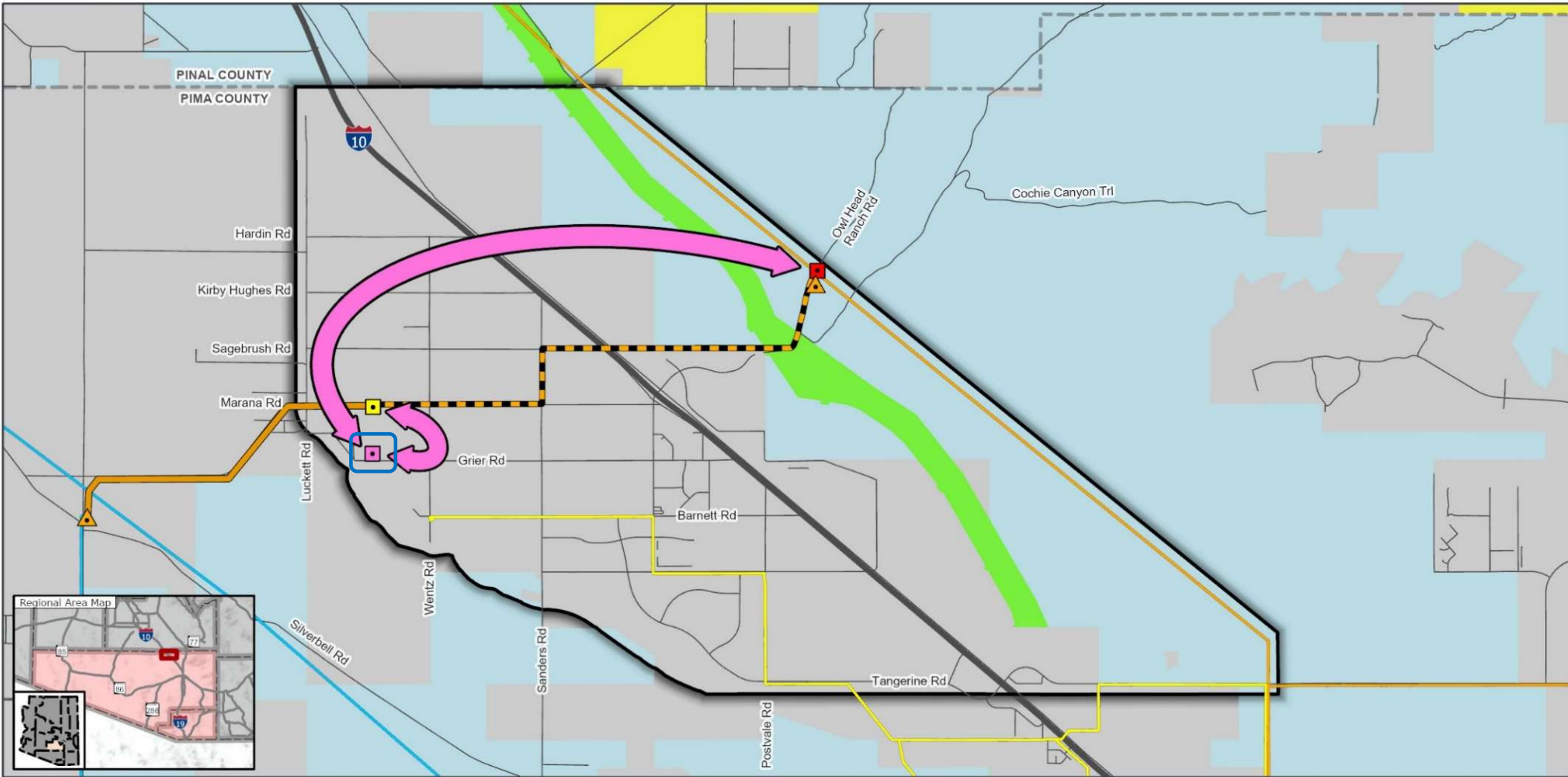


Need and Benefits

- A stronger, smarter grid that will support the community's growing energy needs and maintain reliable service.
- *Need:* Peak power demand in the Marana area has nearly reached the capacity of lower-voltage systems.
- *Benefits:*
 - Better electric reliability through a looped system will help reduce the frequency and duration of outages.
 - Greater transmission capacity to meet the area's growing energy needs.



Conceptual Connections



Grier Substation

VIEW POINT



GRIER SUBSTATION



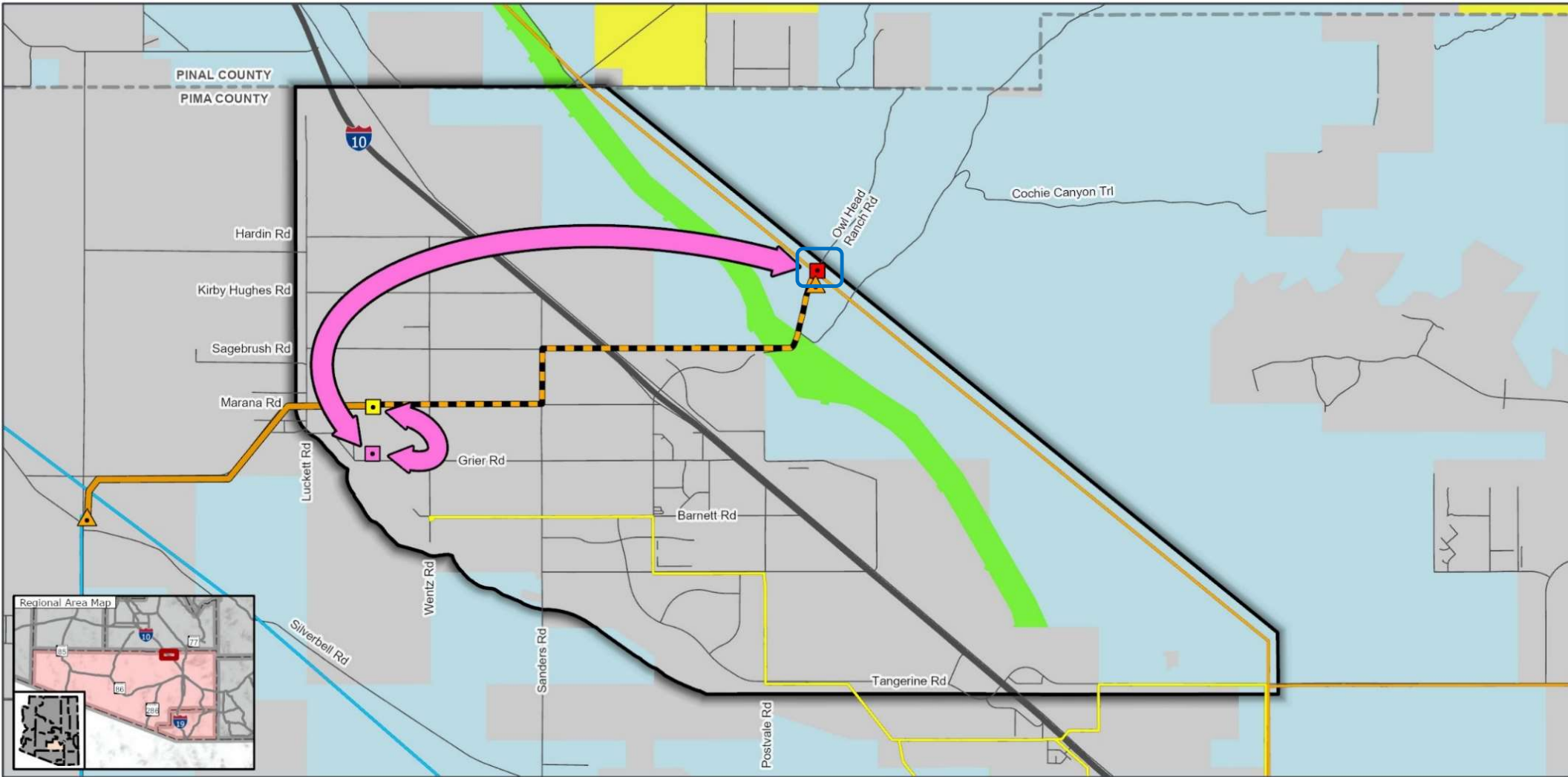
EXISTING CONDITIONS



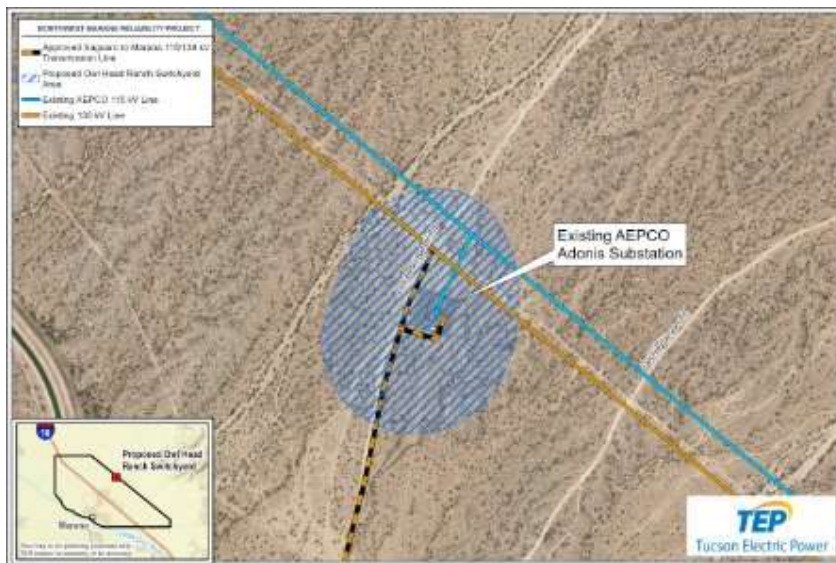
PHOTO SIMULATION



Conceptual Connections



Owl Head Ranch Switchyard



The proposed Owl Head Ranch Switchyard will be built near the existing Arizona Electric Power Cooperative's (AEPCC's) Adonis Substation.



TEP's Existing Sonoran Substation



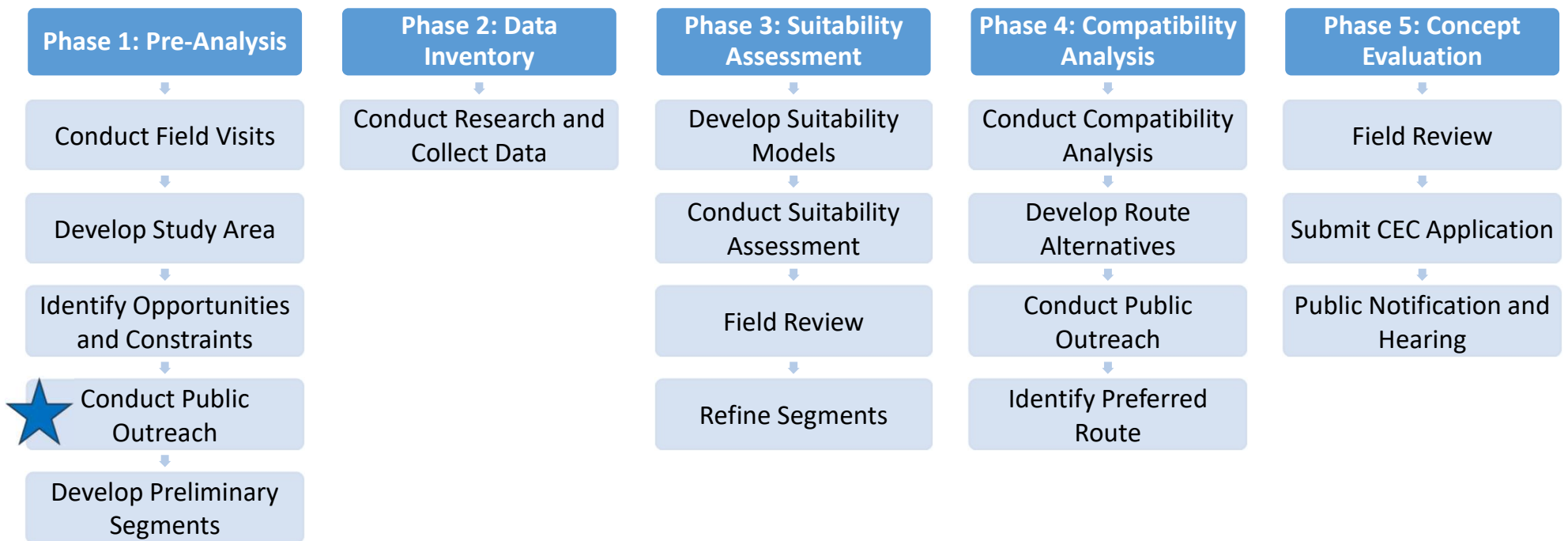
Pole Structure

Tubular, Weather Steel Monopoles



Typical structure, approximately 74' feet tall,
located at 967 S Pantano Rd in Tucson.

Siting Process



★ *We are here*

Evaluation Criteria

Please share what values matter most to you.



Wildlife & plant life



Scenic areas, historic sites & archaeological sites and structures



Environment



Noise emission levels & interference with communication signals



Potential public recreational uses



Existing development plans



Engineering feasibility and challenges

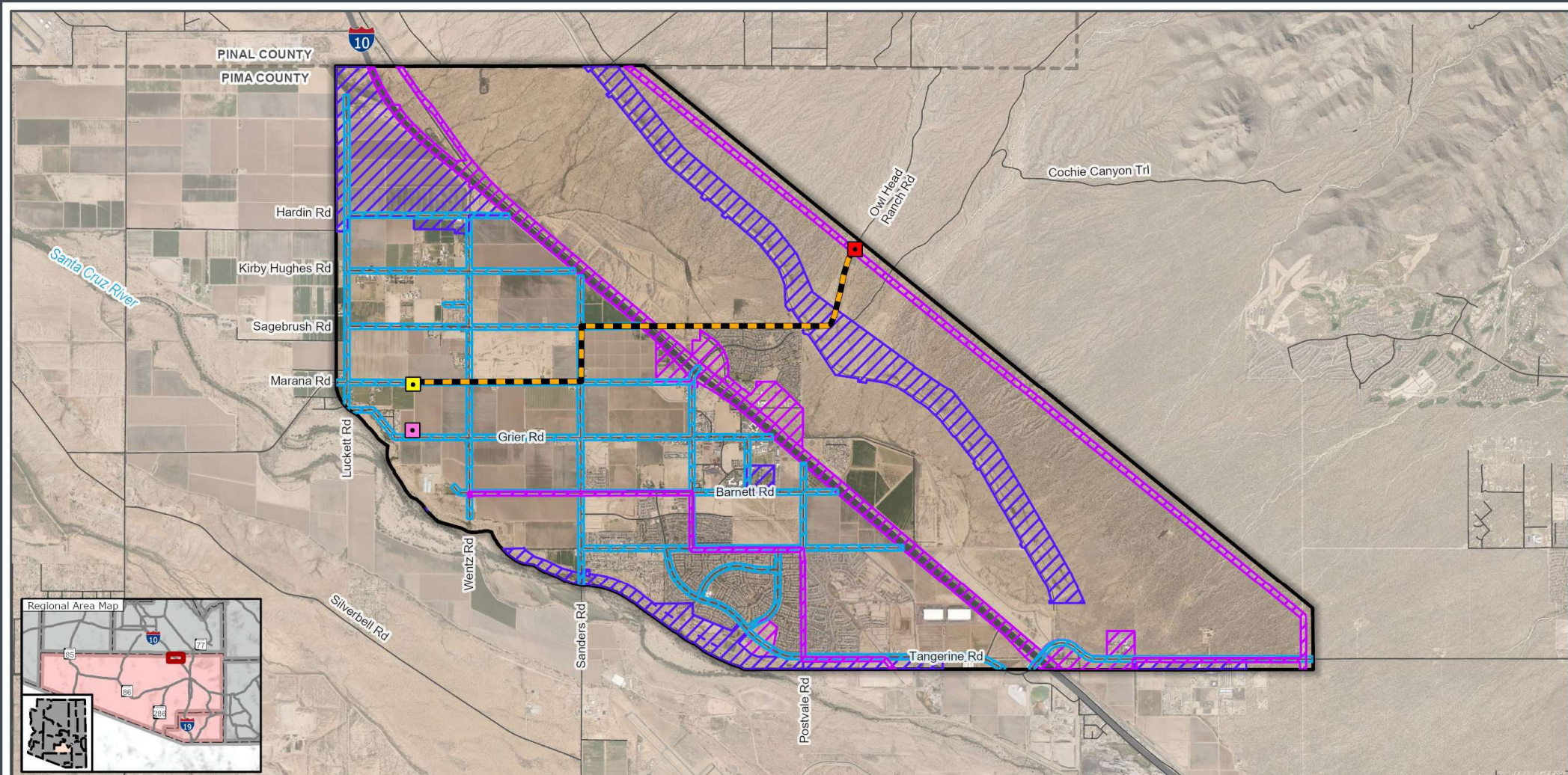


Project costs & potential impacts on customer rates

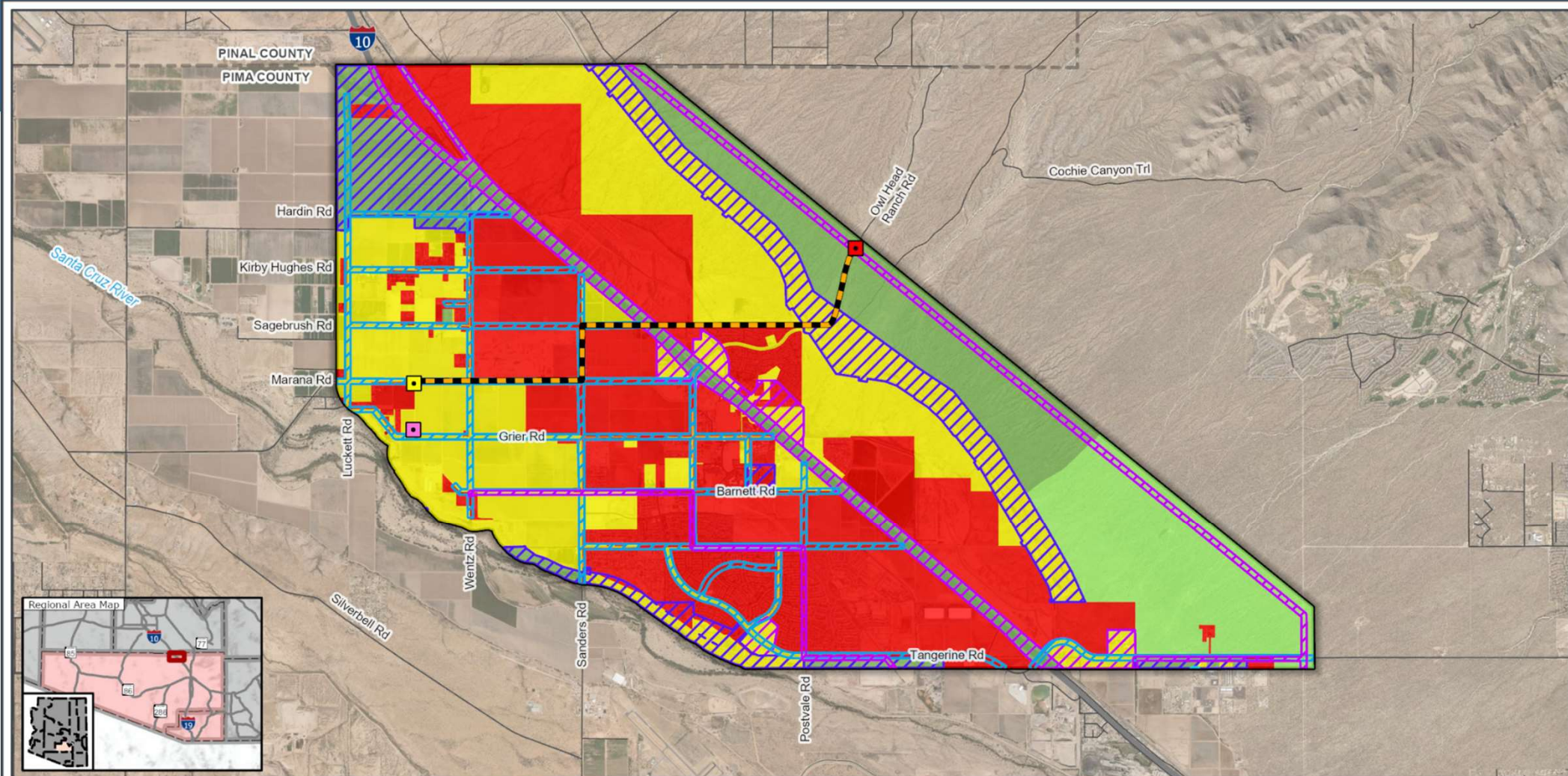


Public input

Opportunities



Opportunities and Constraints



Timeline



How to Provide Official Public Comment

- Submit an online comment at tep.com/northwest-marana.
- Email comments to nwmarana@tep.com.
- Call 1-833-655-0399 and leave a voicemail message.
- Mail a letter with comments to:
 - Northwest Marana Reliability Project
 - ATTN: Theresa Knoblock
 - 343 West Franklin Street
 - Tucson, Arizona 85701
- More information: tep.com/northwest-marana



Questions?



tep.com/northwest-marana

