

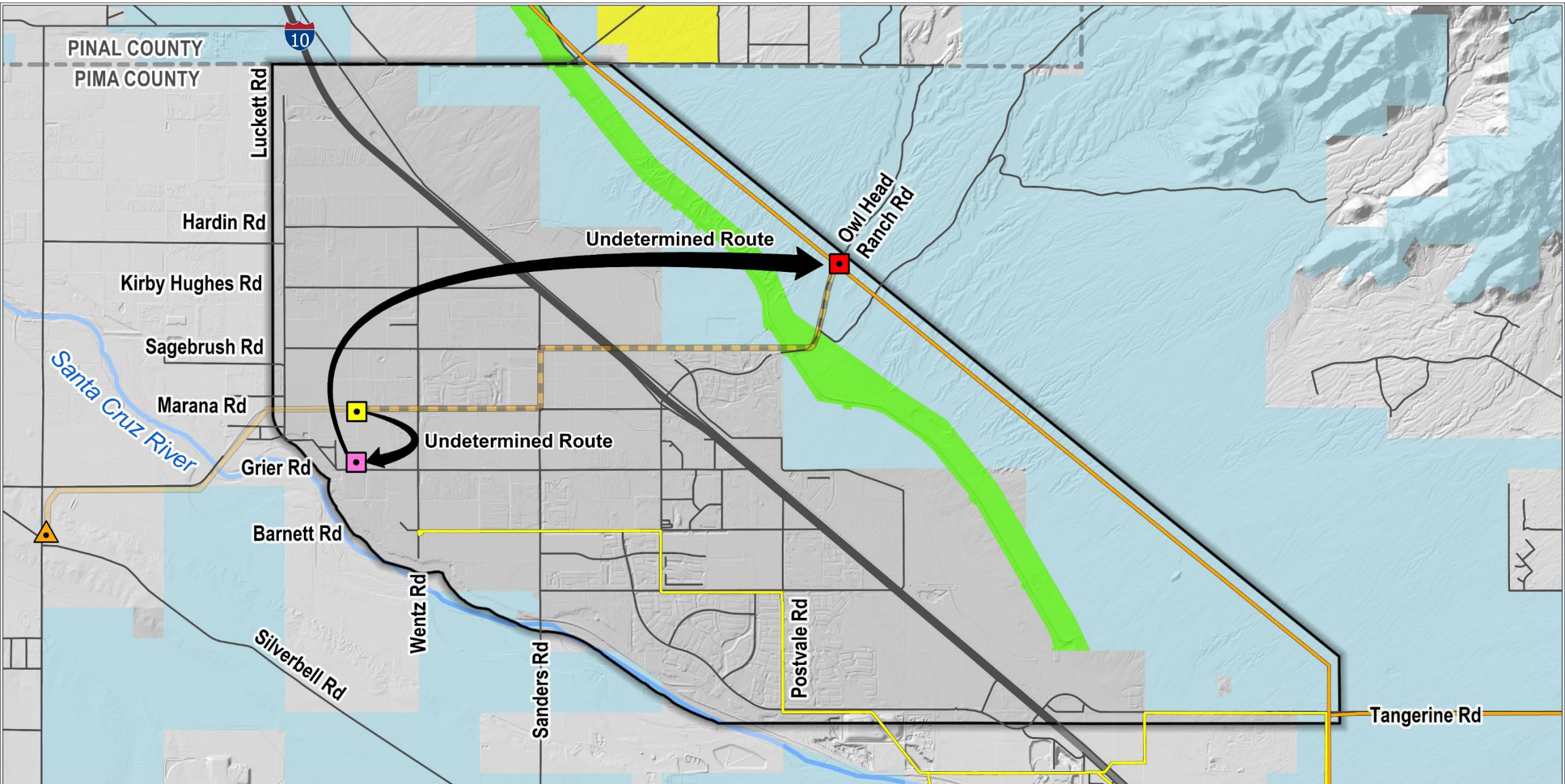
Northwest Marana Reliability Project

ADRIANA MARIÑEZ

SITING, OUTREACH, AND ENGAGEMENT PROJECT MANAGER



Tucson Electric Power



Example Pole Structure

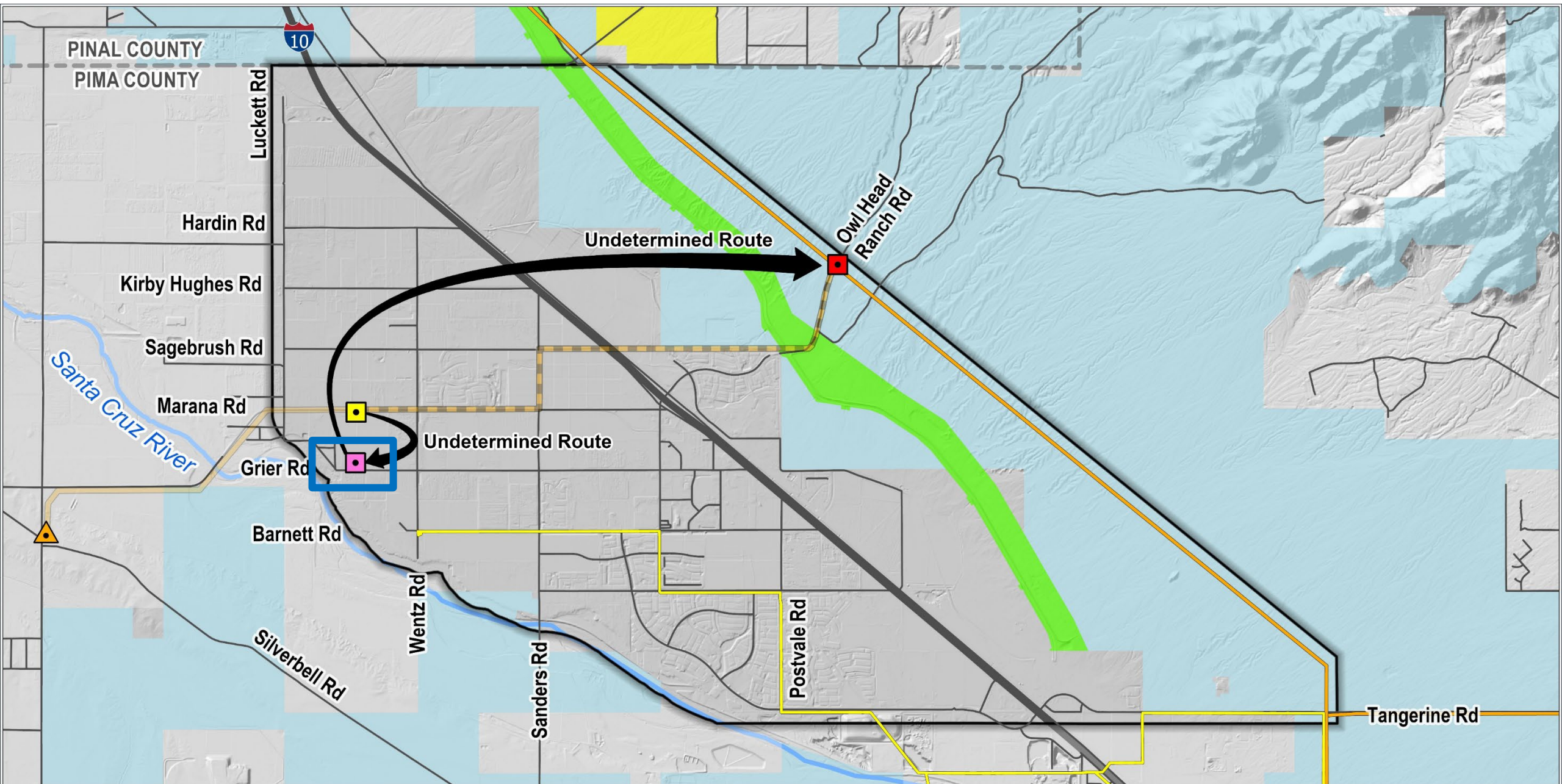
Tubular
Weathering Steel
Monopoles



Typical structure, approximately 74 feet in height, located at 967 S Pantano Rd in Tucson.

Grier Substation

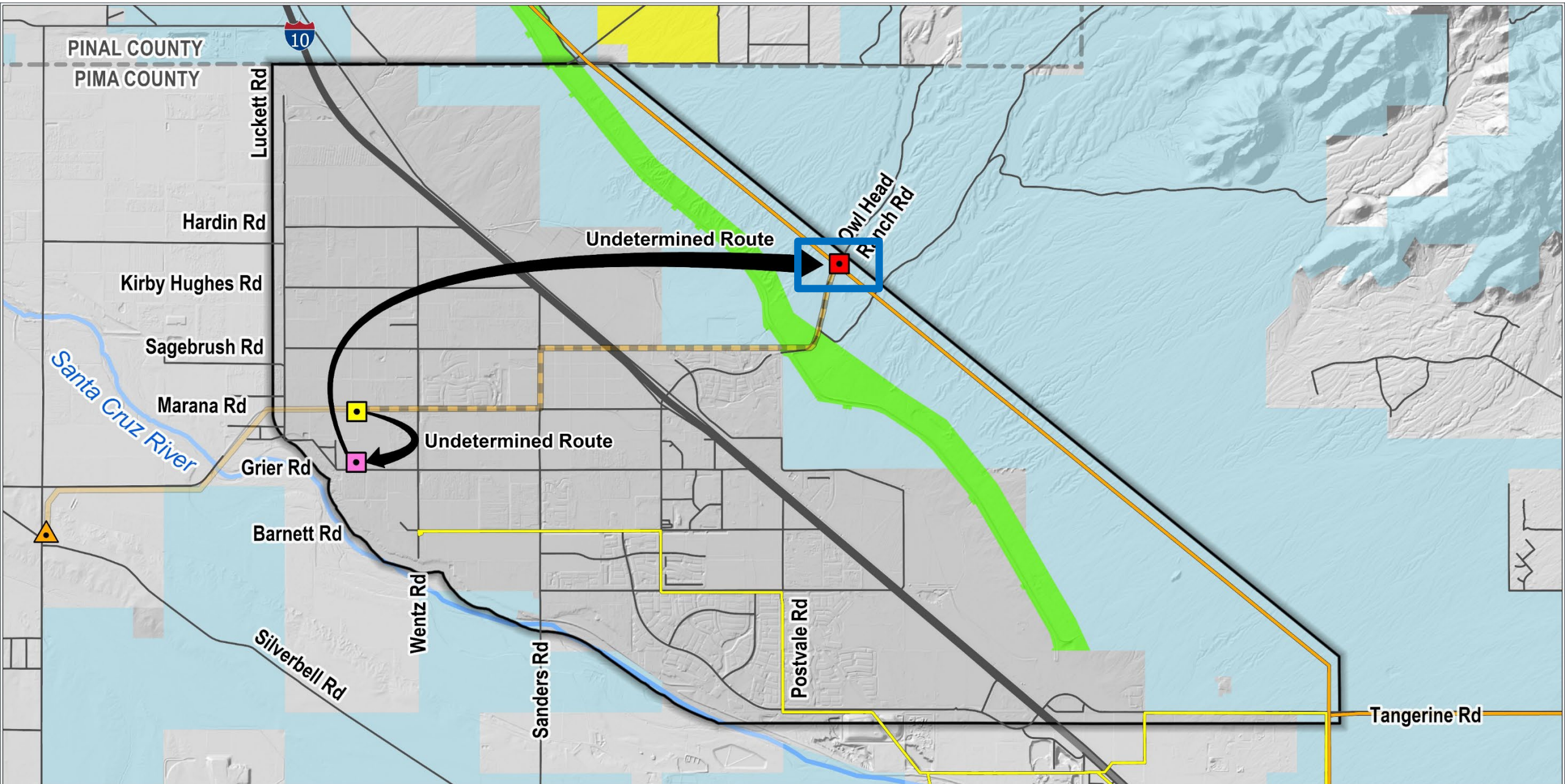




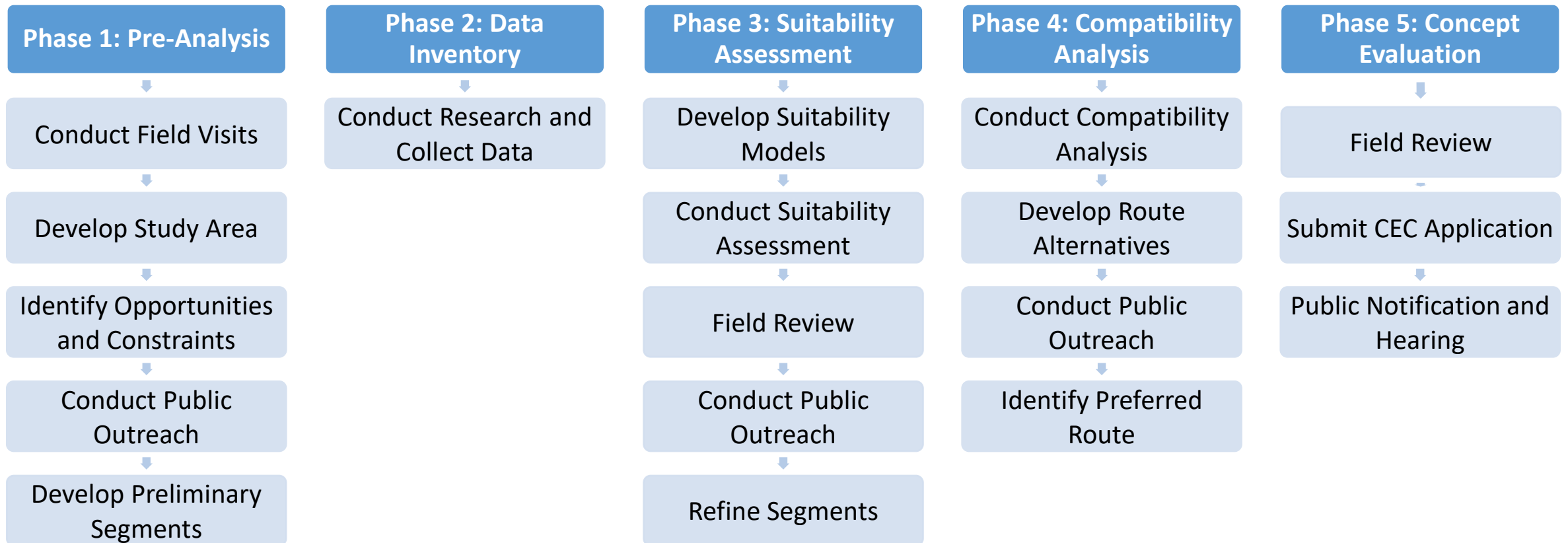
Owl Head Ranch Switchyard



TEP's Existing Sonoran Substation



Siting Process



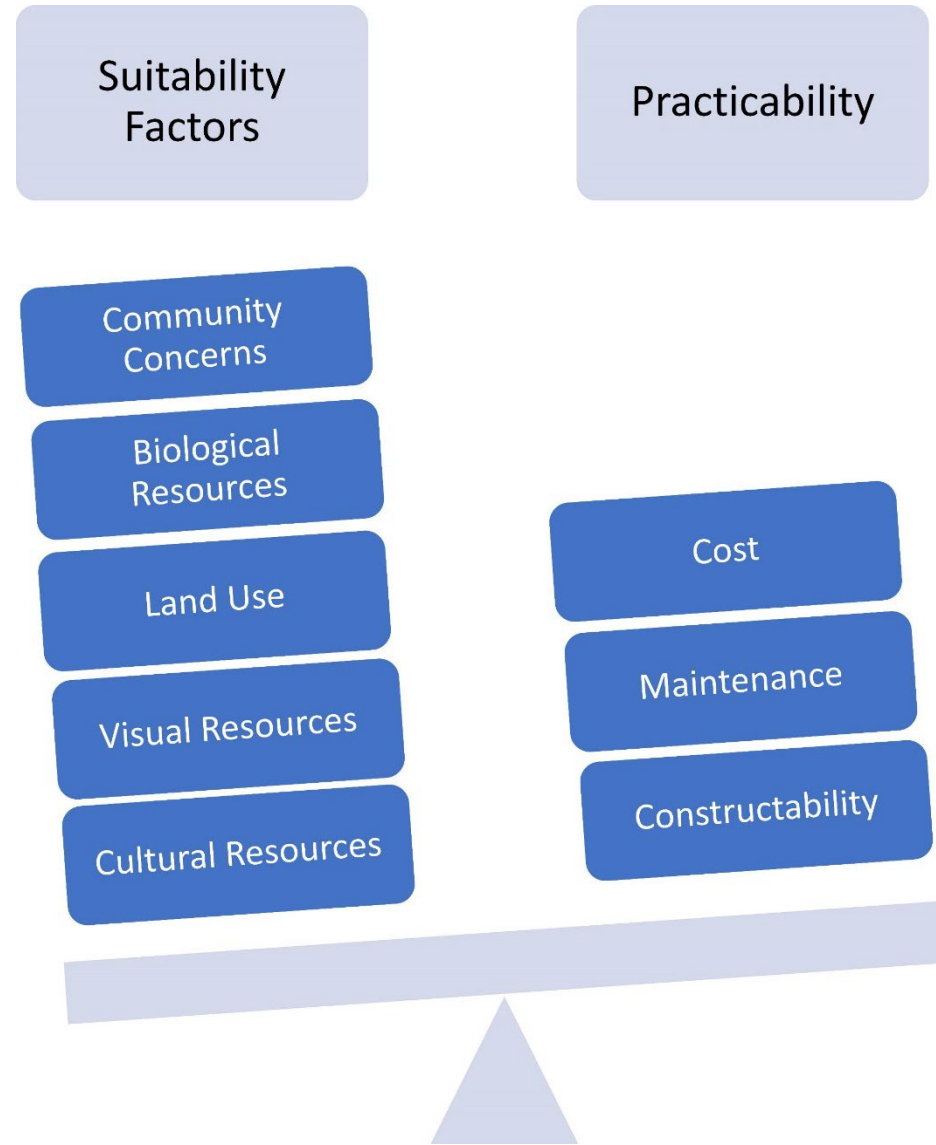
Public Outreach

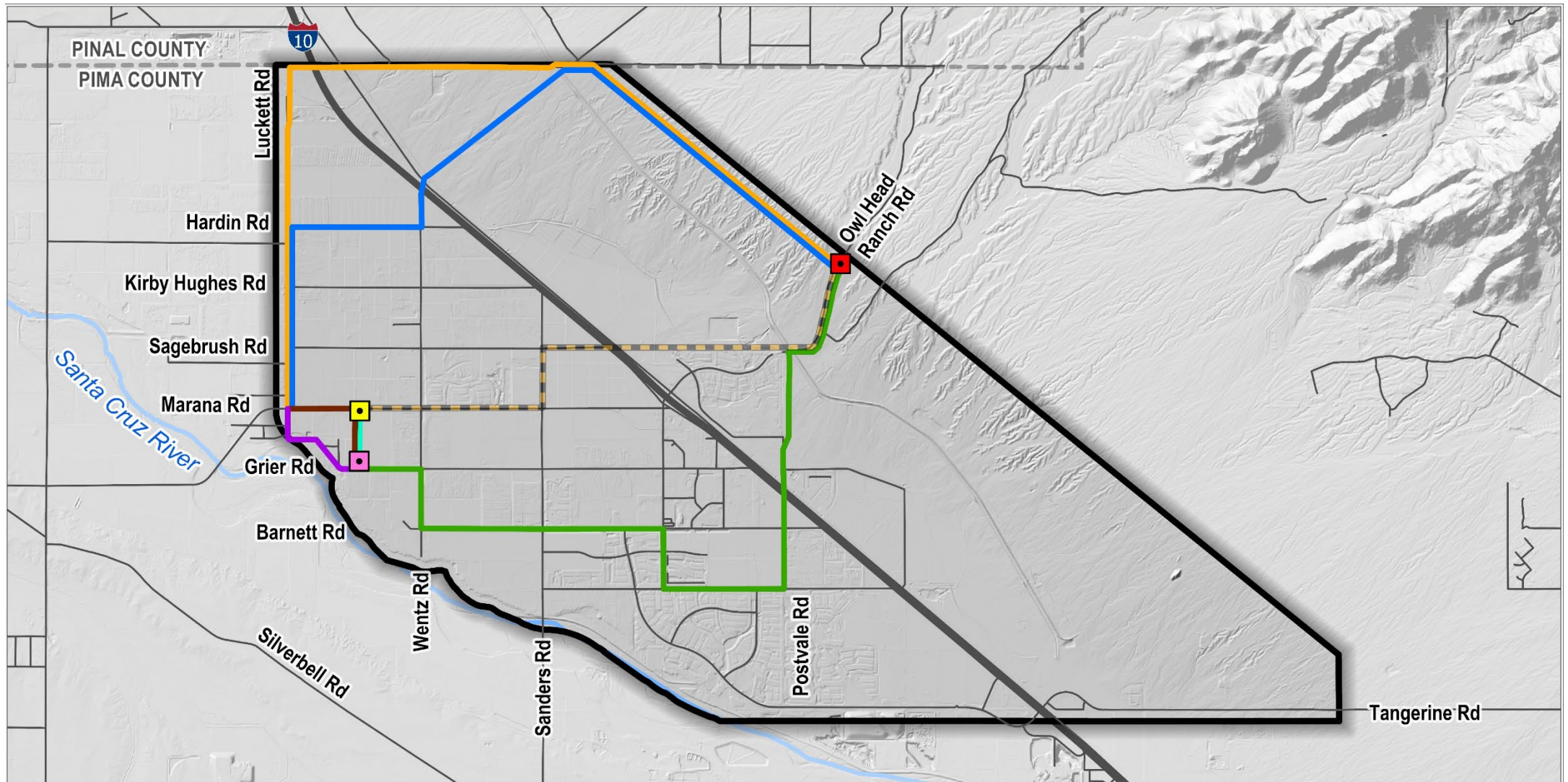
Meetings and Briefings

- Open Houses (3)
- Agency Briefings (3)
- Four southern tribes
- San Lucas Neighborhood
- Town of Marana
- Elected officials

Project Route Development and Evaluation

Tucson Electric Power considers factors important to the community and environment, and balances them with constructability, maintenance, and cost to find the most suitable path for the transmission line that satisfies the need for the project.





**NORTHWEST MARANA
RELIABILITY PROJECT
Alternative Routes**



Project Features

- Study Area
- Circuit Tie
- Proposed Owl Head Ranch Switchyard
- Approved Grier Substation
- Approved Saguaro to Marana 115/138 kV Transmission Line (Under Construction)

Grier Substation to Owl Head Ranch Switchyard

- Alternative 1
- Alternative 2
- Alternative 3
- Alternative A
- Alternative B

Grier Substation to Circuit Tie

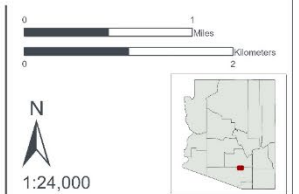
- Grier to Circuit Tie - Preferred Route

Reference Features

- Road
- Interstate
- County Boundary

Pima County, AZ
NAD 1983 UTM Zone 12N
32.4622°N 111.2°W

Base Map: Esri ArcGIS Online,
accessed March 2025
Updated: 3/11/2025
Project No. 84883
Layout: Poster - Alternatives
Aprx: 84883_Marana_Siting_posters



How to Provide Official Public Comment

- Submit an online comment at tep.com/northwest-marana.
- Email comments to nwmarana@tep.com.
- Call 1-833-655-0399 and leave a voicemail message.
- Mail a letter with comments to:
Northwest Marana Reliability Project
ATTN: Theresa Knoblock
343 West Franklin Street
Tucson, Arizona 85701
- More information: tep.com/northwest-marana



Timeline



Q&A SESSION



Please raise your (virtual) hand

OR

Type your question into the chat