

Project Information Open House

WELCOME

Presentation - 7:00 p.m.

Midtown Reliability Project



Future Opportunities to Participate

- Feb. 2024* – Public Open House
- Apr. 2024* – Public Open House
- July 2024* – Line Siting Hearing
- Q3 2024* – ACC Open Meeting
- Neighborhood Advisory Group
- Neighborhood Listening Session

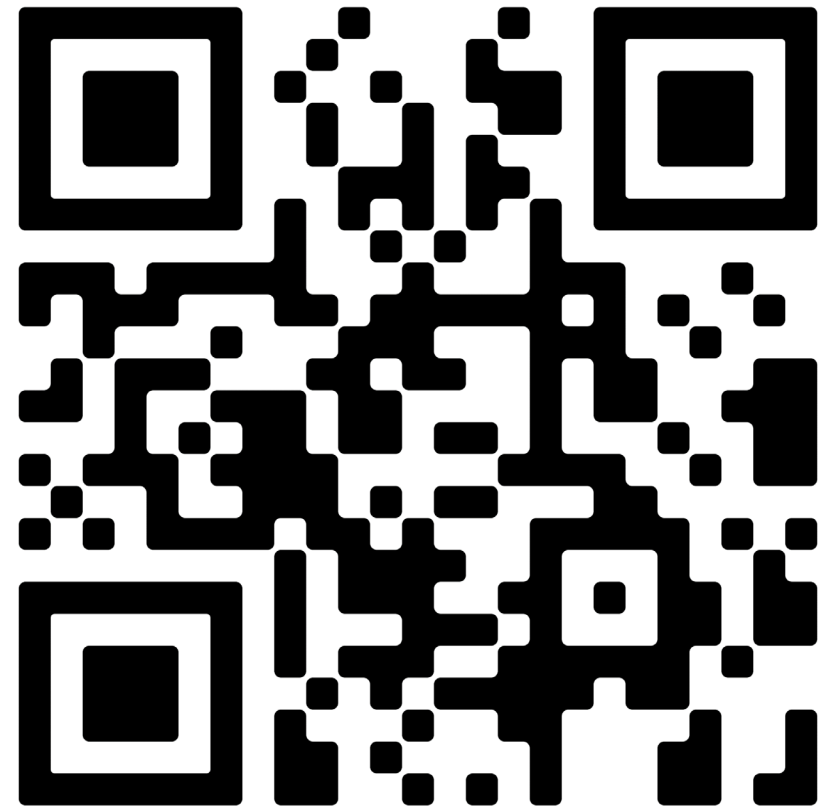
* Target schedule, subject to change

Midtown Reliability Project



How to Comment

- Mail a comment form or a letter to:
P.O. Box 711
ATTN: Midtown Reliability
Mail Stop CB200
Tucson, AZ 85701-0711
- Complete online comment form
- Visit webpage tep.com/midtown
- Send comments to midtownreliability@tep.com
- Call 1-833-523-0887 and leave a voicemail message



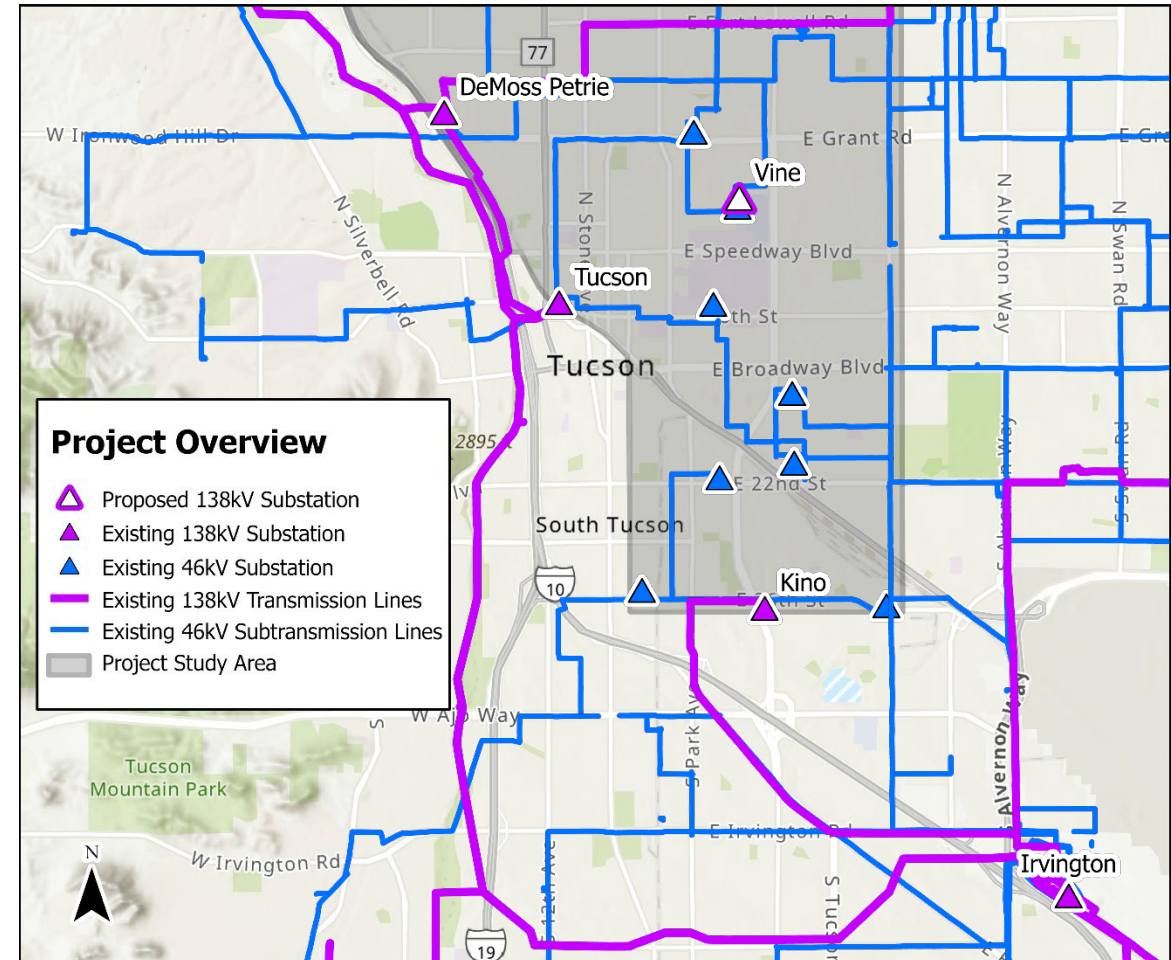
Online Comment Form

Project Overview



Components of the Midtown Reliability Project

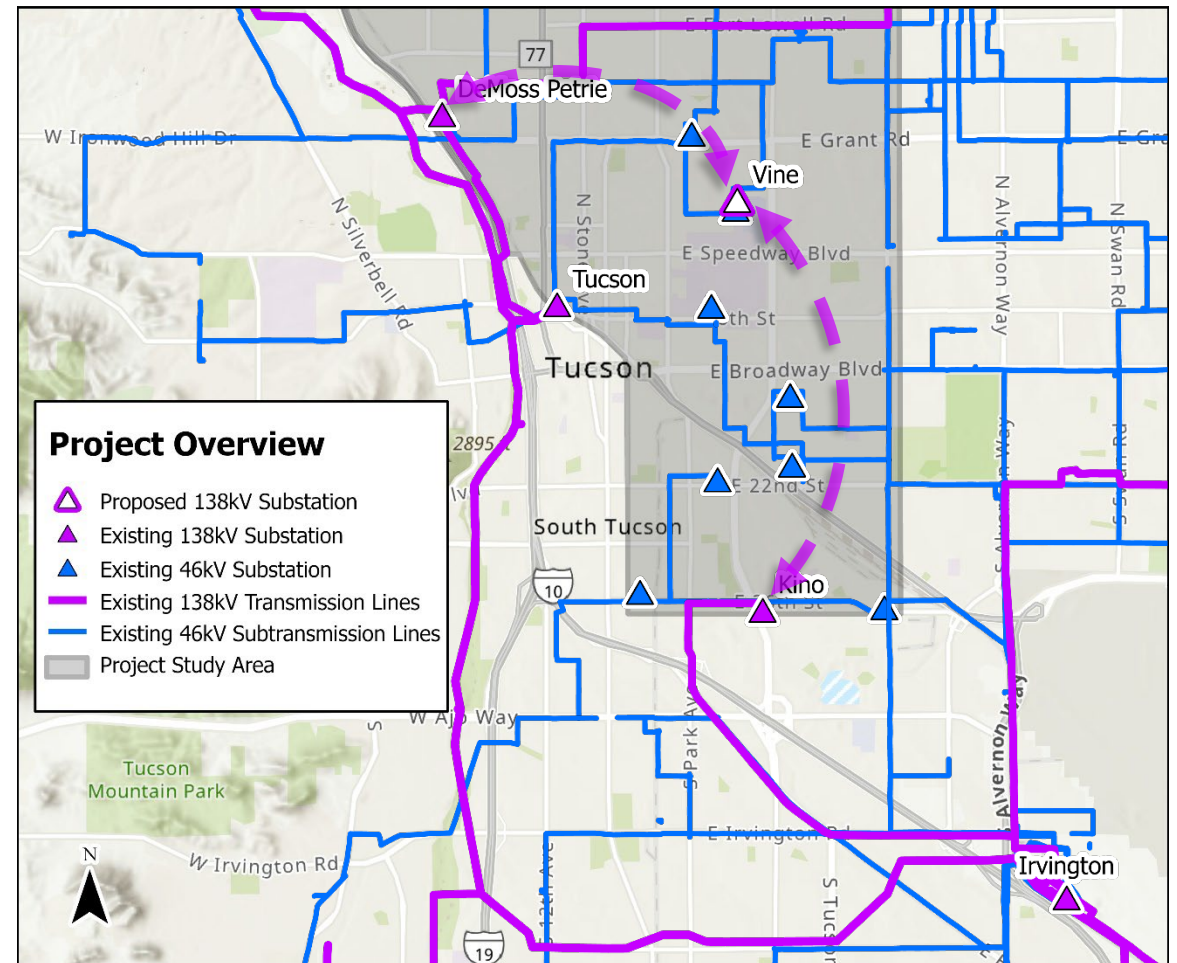
- Vine Substation



Project Overview

Components of the Midtown Reliability Project

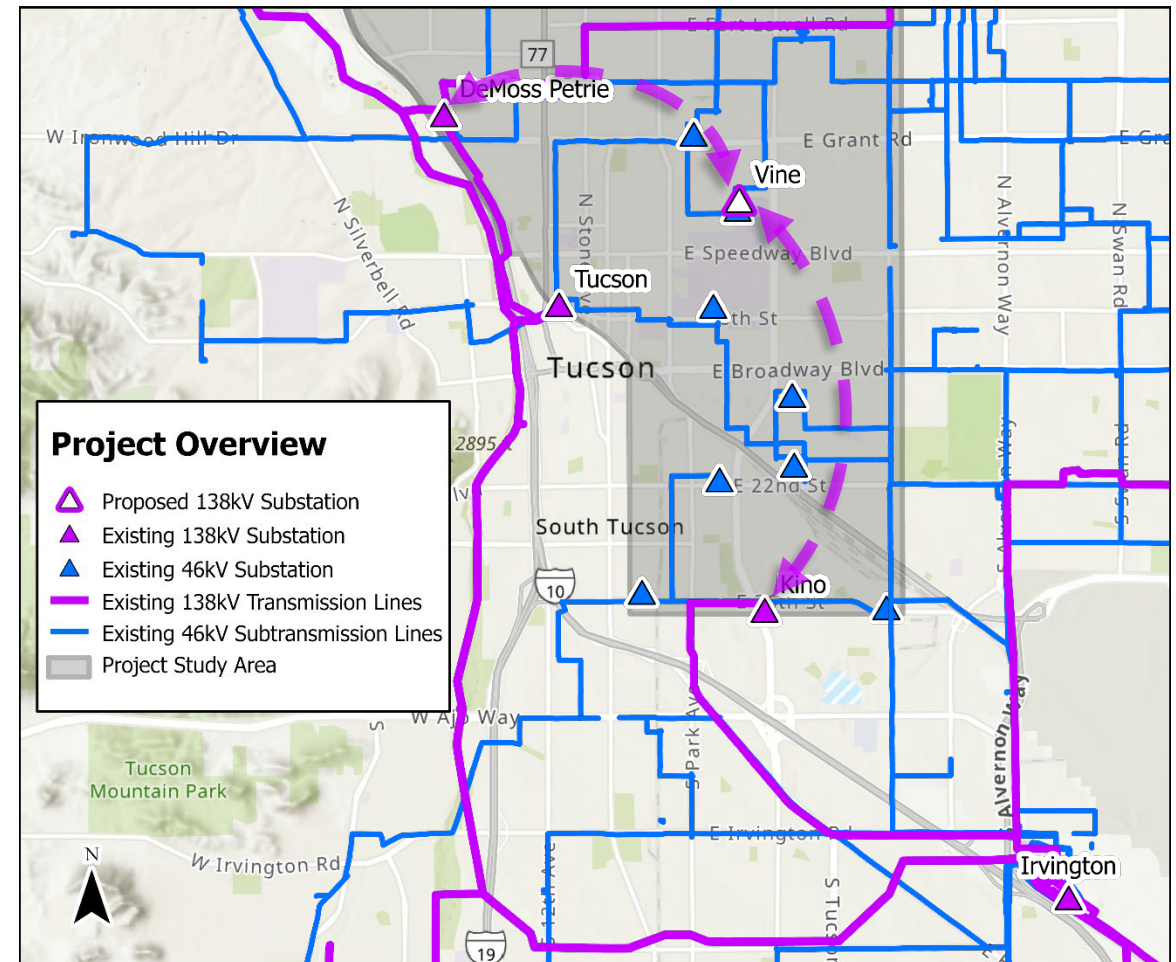
- Vine Substation
- 138 kilovolt (kV) Transmission Line



Project Overview

Components of the Midtown Reliability Project

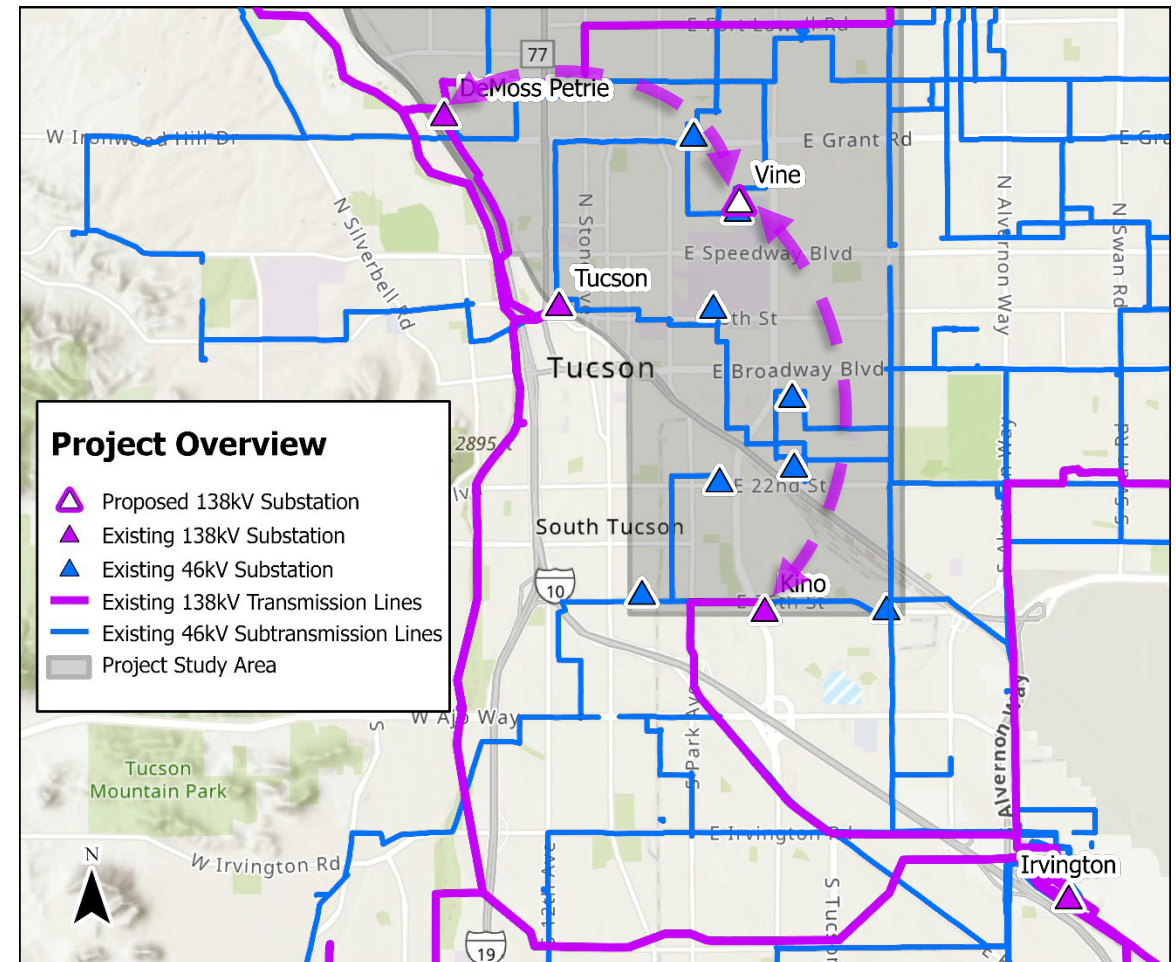
- Vine Substation
- 138 kilovolt (kV) Transmission Line
- Distribution System Upgrades



Project Overview

Components of the Midtown Reliability Project

- Vine Substation
- 138 kilovolt (kV) Transmission Line
- Distribution System Upgrades
- Retirement of Aging Assets

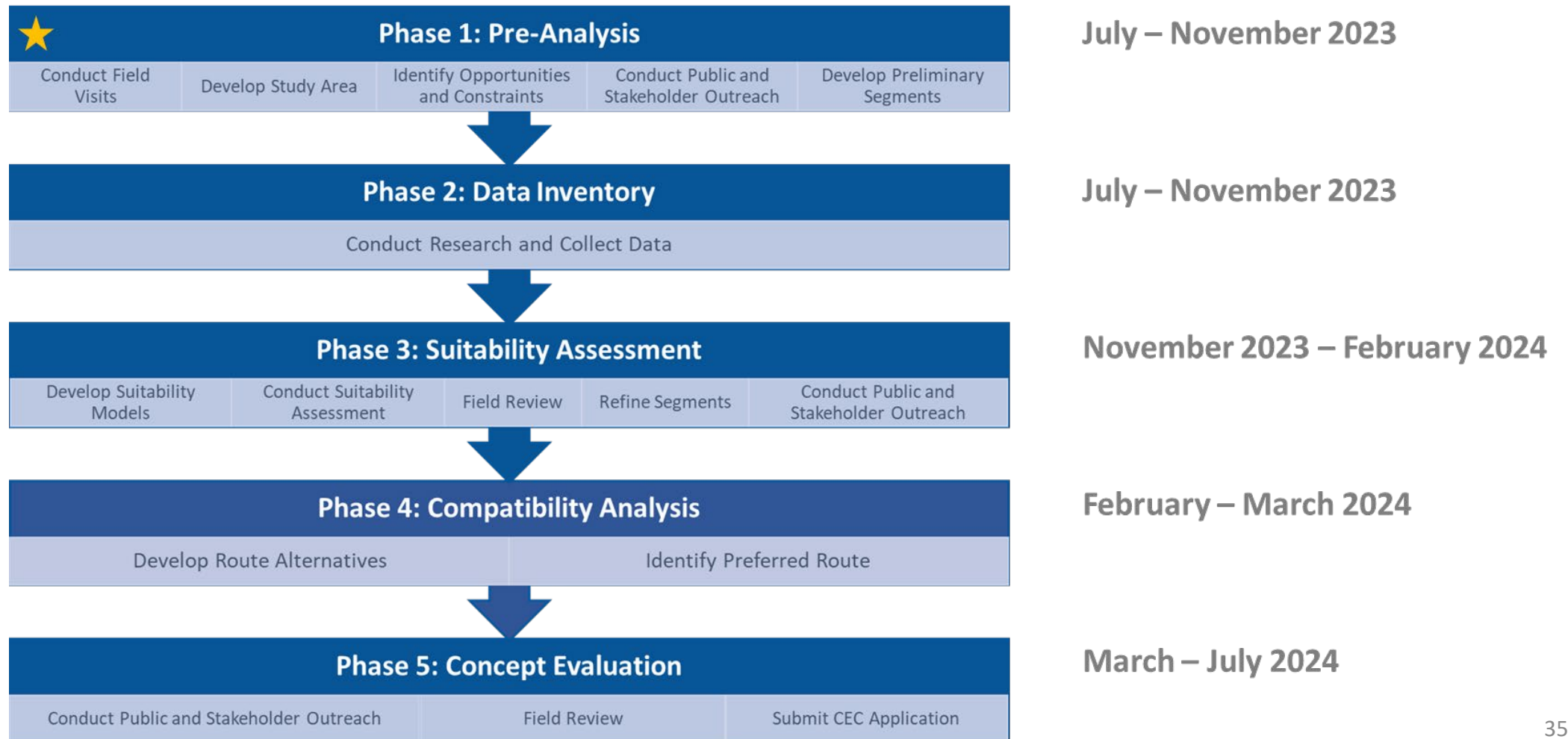


Summary of Project Benefits

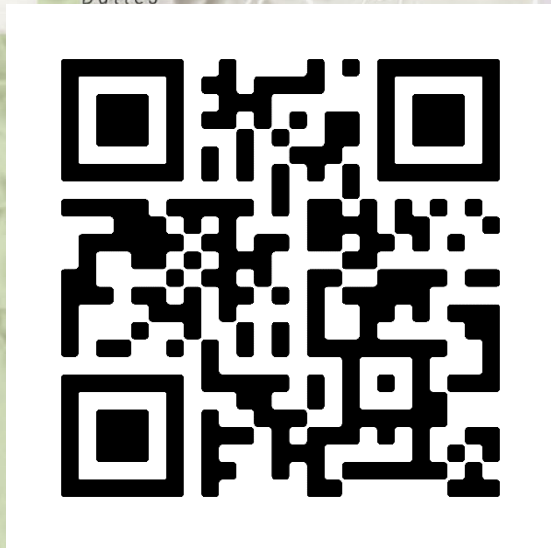
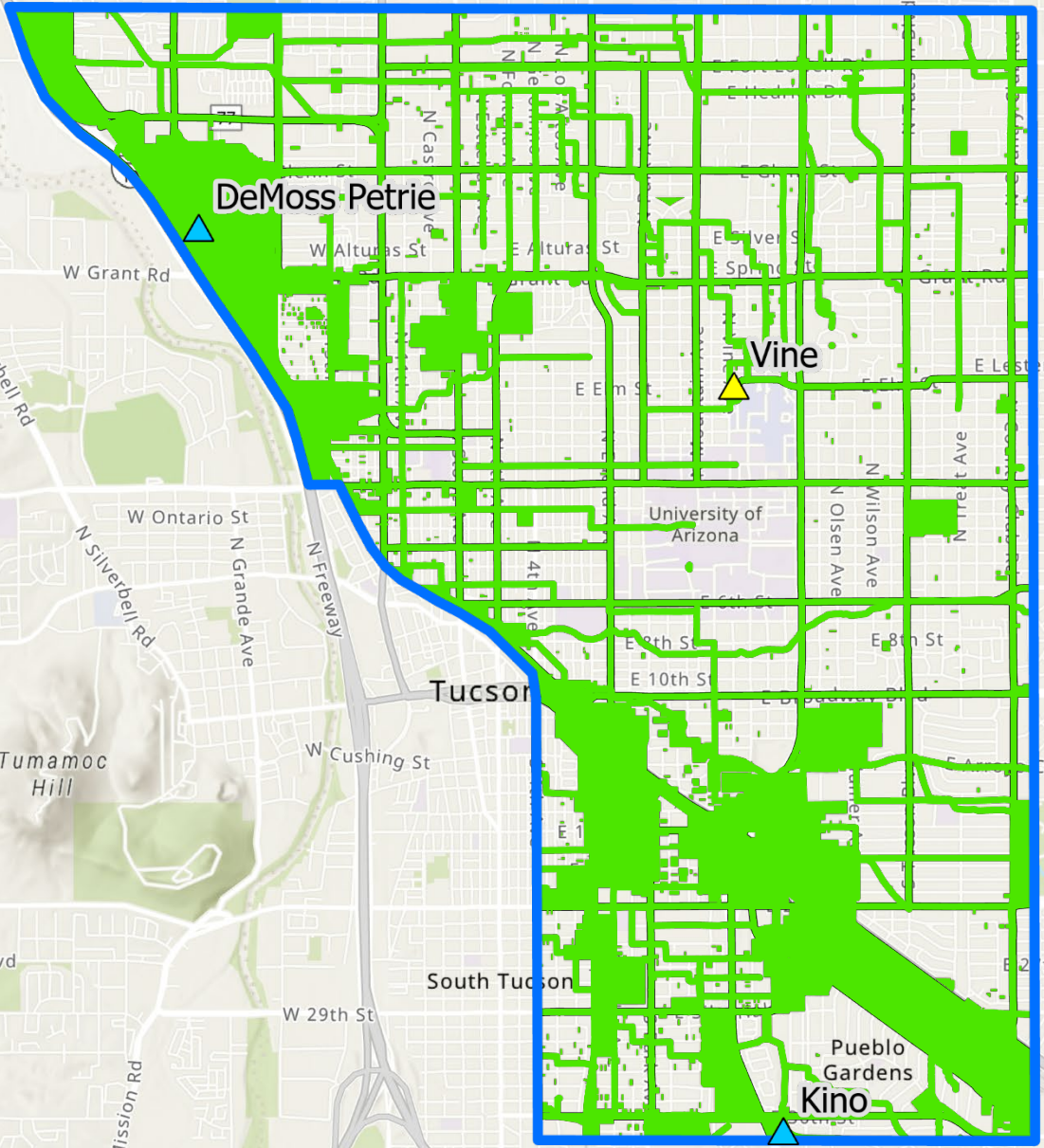


- Improved electric reliability
- Greater capacity for customer-owned energy systems
- Comparable cost, greater efficiency
- Improved service citywide
- Support for economic growth and a healthy community

Planning and Siting Process and Timeline

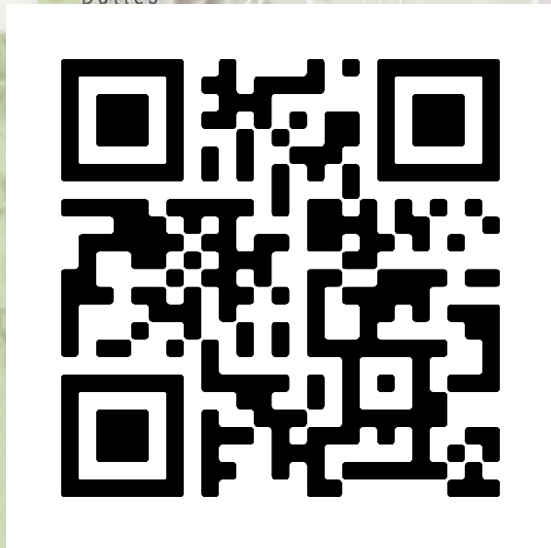


Opportunities

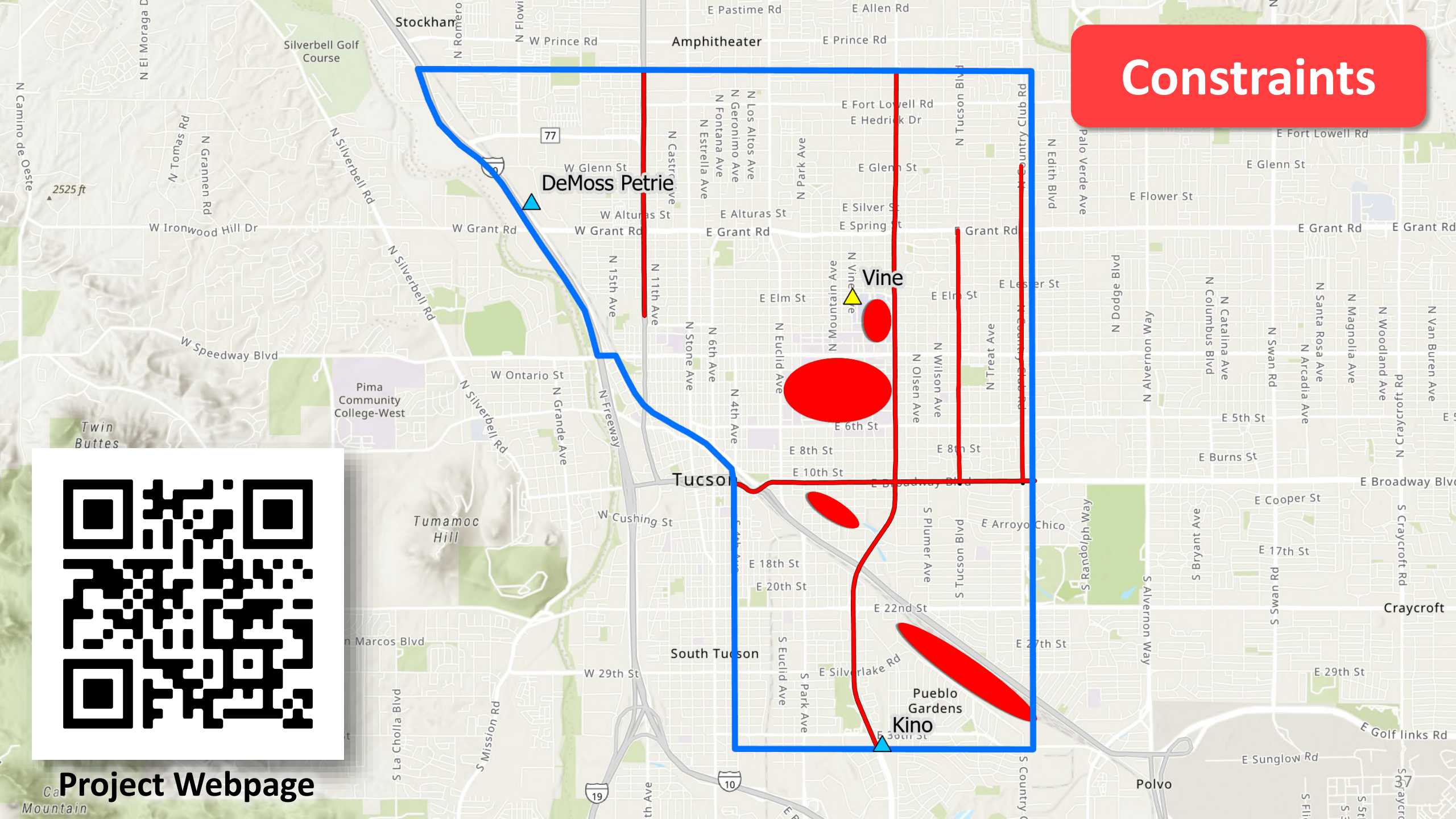


Project Webpage

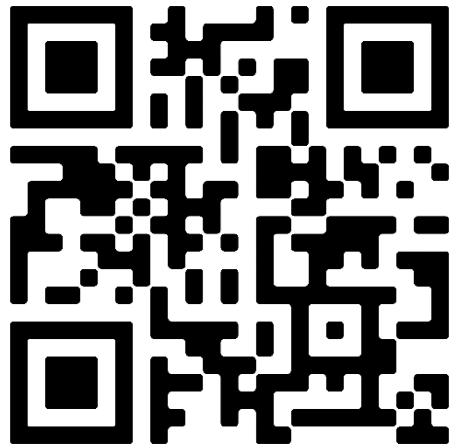
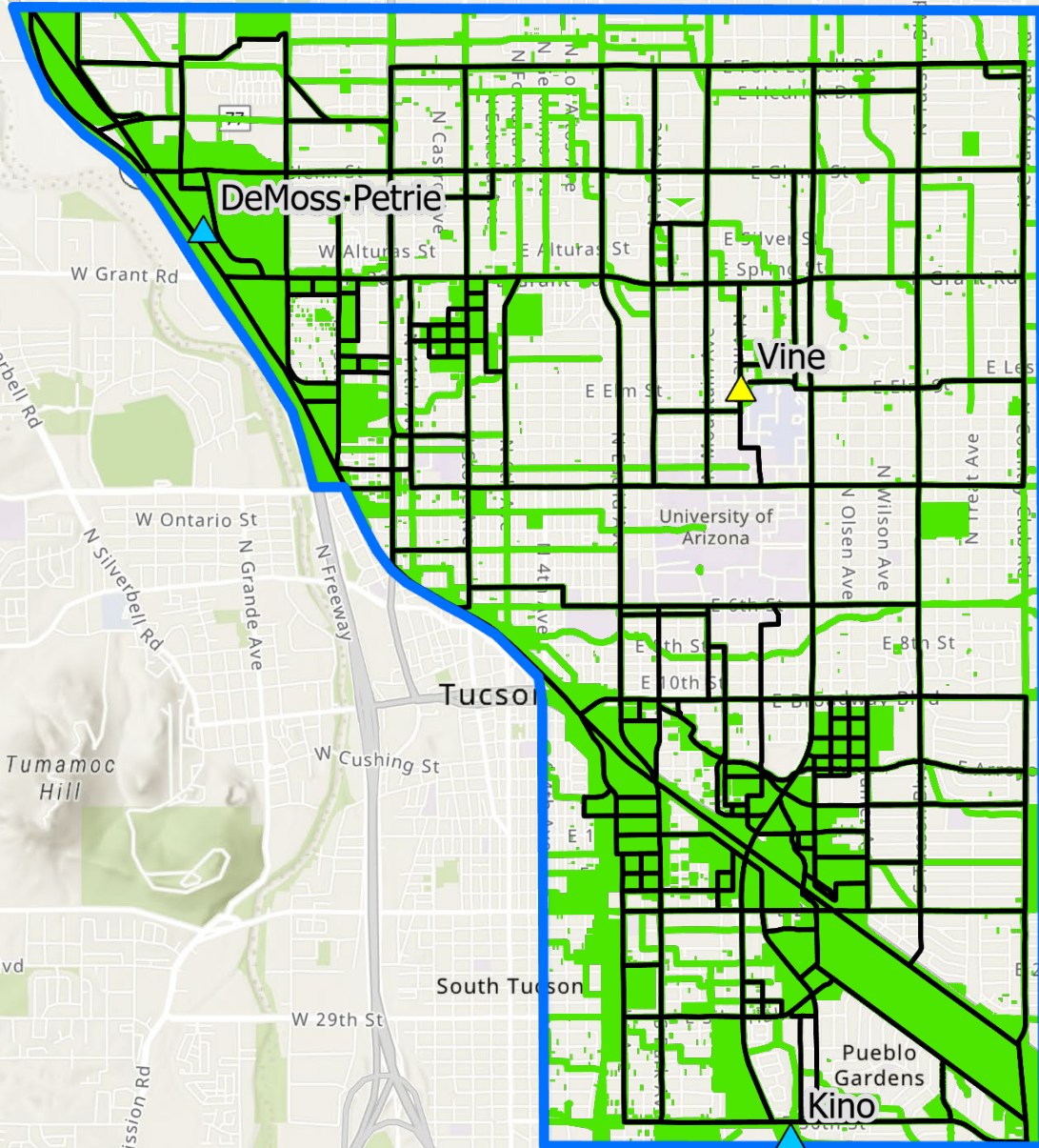
Constraints



Project Webpage

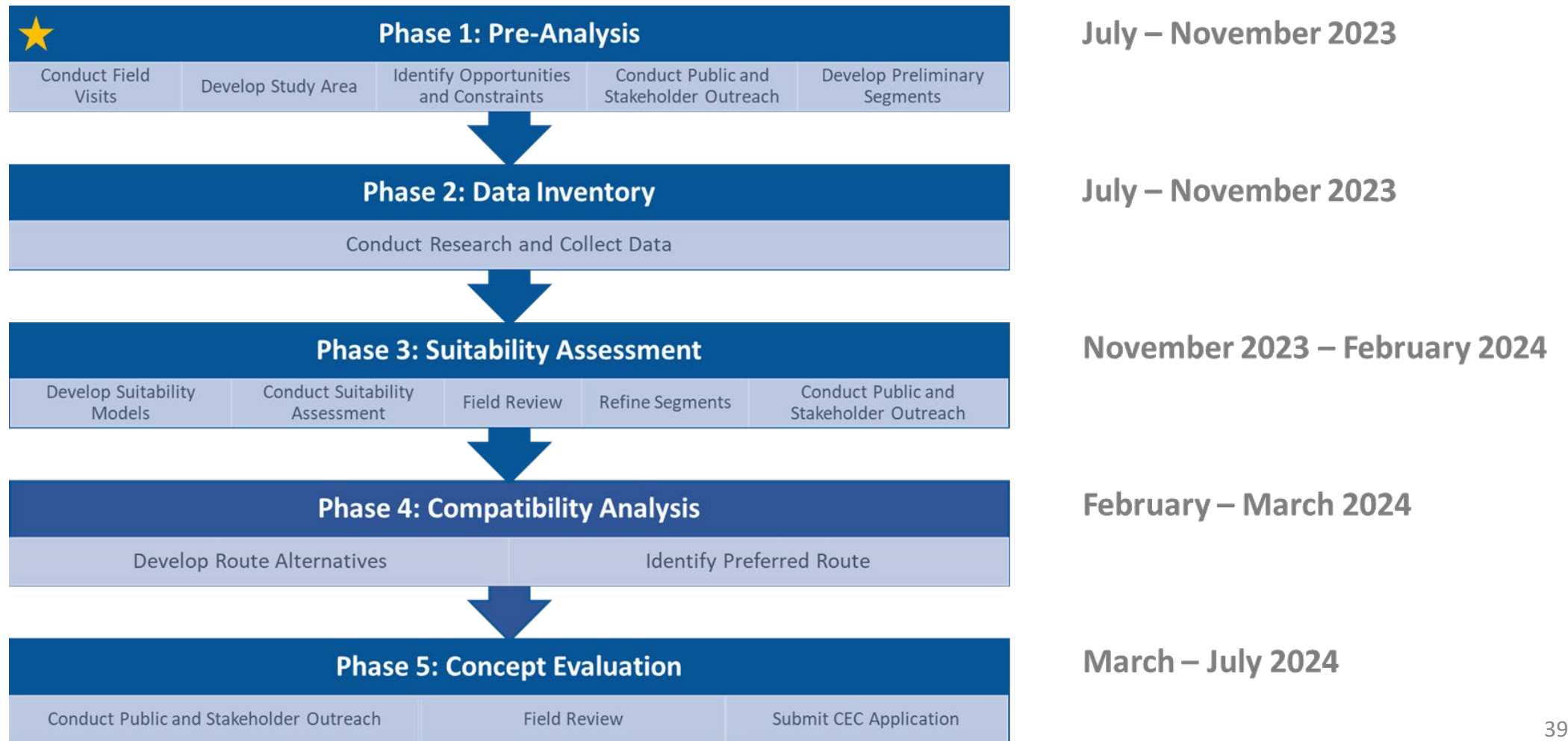


Preliminary Segments



Project Webpage

Planning and Siting Process and Timeline



Project Criteria Survey - Results



- Open Aug 31 through Oct 15
- Sent specific link by email to ~55,000 customers in the project notification area
- Available anonymously online
- 2,792 participants
 - 2,566 from email
 - 228 from anonymous link on project webpage

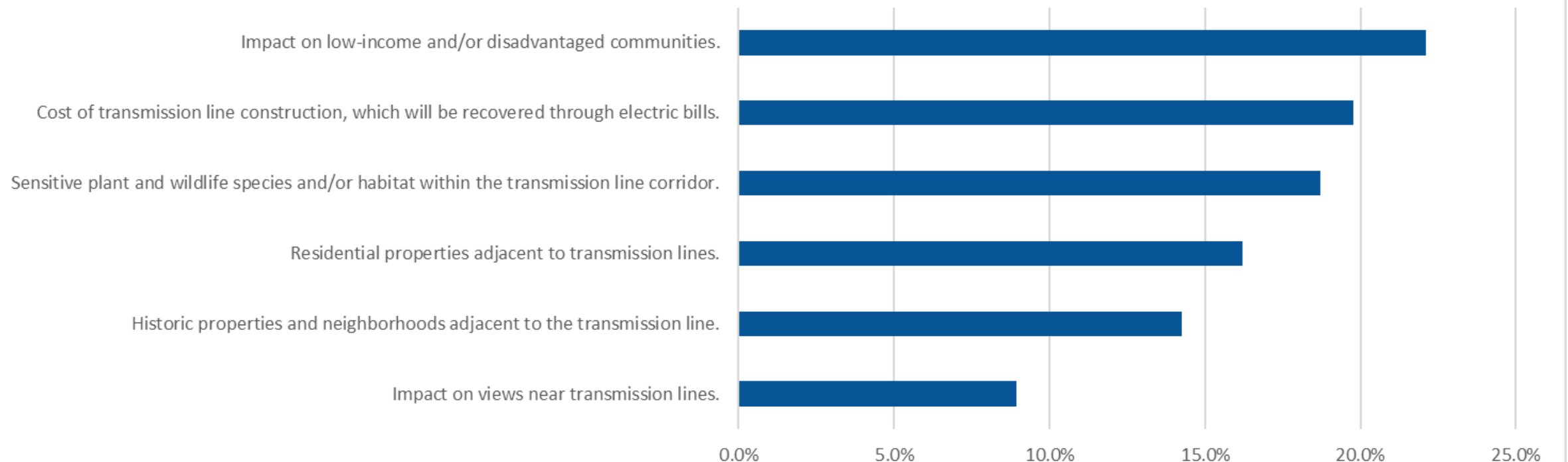
Project Criteria Survey - Results



Survey Question

In your opinion, which criteria are most important in considering the route of the proposed transmission line for the Midtown Reliability Project? Select up to TWO (2).

Most Important Criteria to Consider

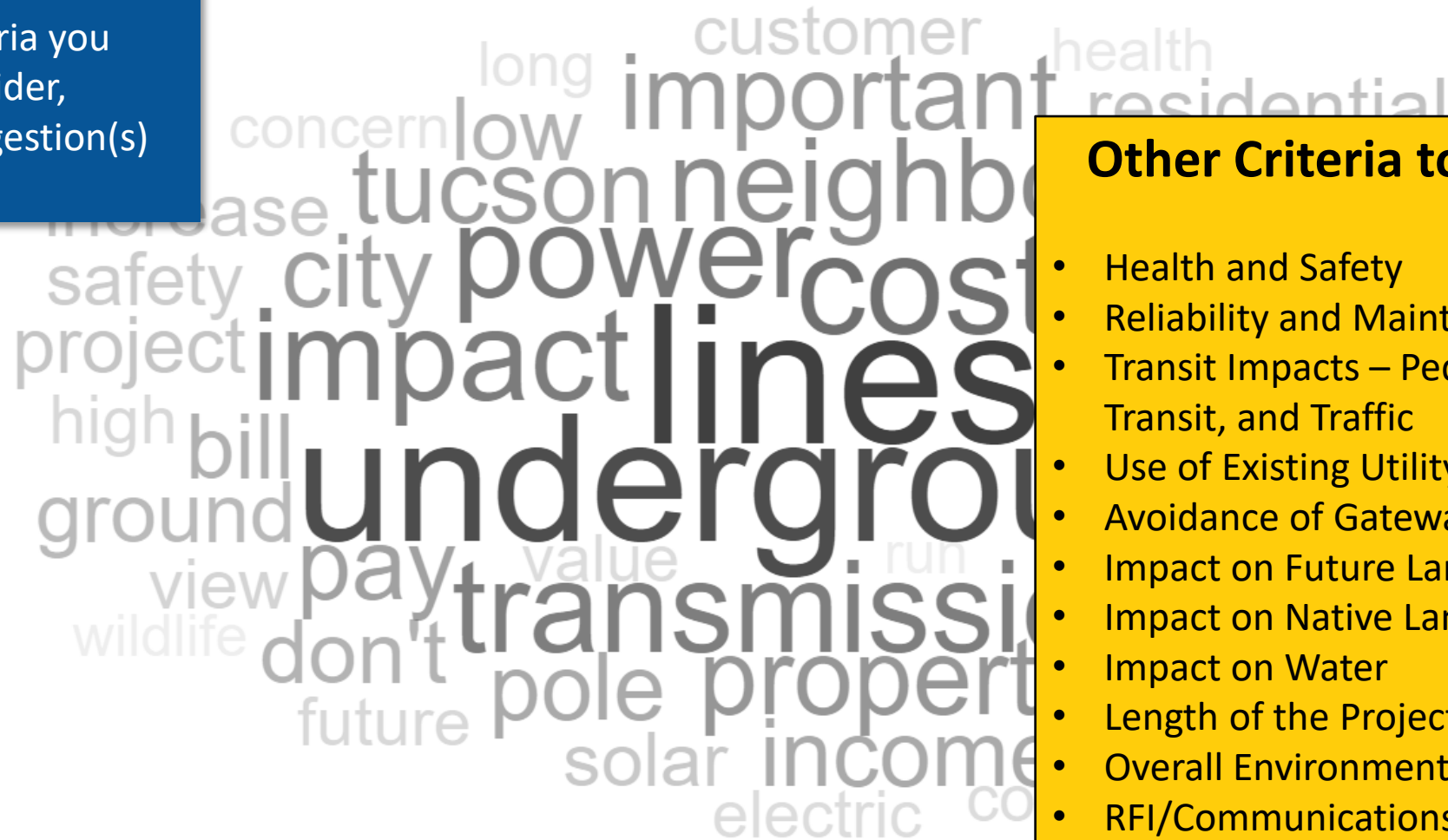


Project Criteria Survey - Results



Survey Question

If there are other criteria you would like TEP to consider, please share your suggestion(s) in the box below:



Other Criteria to Consider:

- Health and Safety
- Reliability and Maintenance
- Transit Impacts – Pedestrian, Public Transit, and Traffic
- Use of Existing Utility Corridors
- Avoidance of Gateway Corridors
- Impact on Future Land Uses
- Impact on Native Lands
- Impact on Water
- Length of the Project
- Overall Environmental Impact
- RFI/Communications Interference

Proposed Evaluation Criteria



1. Impact on low-income and/or disadvantaged communities.
- 2.^b Cost of transmission line construction, including relocation/undergrounding of distribution lines.
- 3.^b Sensitive plant and wildlife species and/or habitat within the transmission line corridor.
- 4.^a Residential properties adjacent to transmission lines.
- 5.^{ab} Historic properties adjacent to transmission lines.
- 6.^{ab} Impact on views near transmission lines.

^a Identified, in part, through comments on past Kino-DMP Project

^b Required per [ARS 40-360.06](#)

Proposed Evaluation Criteria (continued)



- ^b Impact on the total environment
- ^b Noise emission levels and interference with communication signals
- ^b Existing development plans
- ^b Engineering feasibility and challenges
- ^{ab} Compliance with applicable ordinances, master plans and regulations
- ^a Health and safety impacts
- Transit Impacts (Pedestrian, Public Transit, Traffic)
- ^a Use of existing utility corridors
- Impact on native lands

^a Identified, in part, through comments on past Kino-DMP Project

^b Required per [ARS 40-360.06](#)

Questions and Comments



PLEASE DO:

- Respect all people who are present.
- Be ready with a concise question/comment.
- Use a respectful tone and language.
- Be respectful of others while they speak.

Written Question Forms

- Fill out and hold form up

Verbal Questions/Comments

- Raise hand until called upon

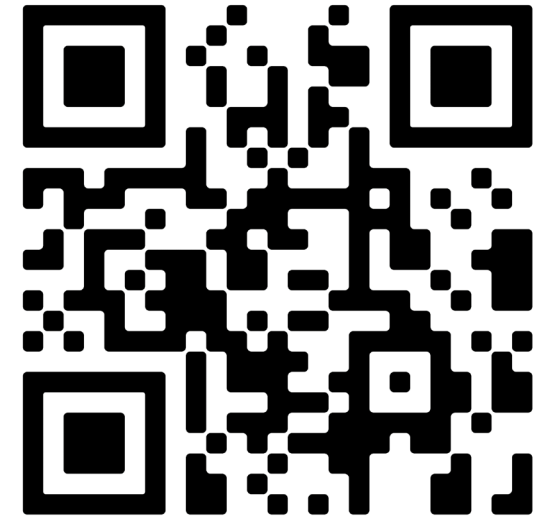
Midtown Reliability Project



Future Opportunities to Participate

- Feb. 2024* – Public Open House
- Apr. 2024* – Public Open House
- July 2024* – Line Siting Hearing
- Q3 2024* – ACC Open Meeting
- Neighborhood Advisory Group
- Neighborhood Listening Session

Please Comment



Online Comment Form

* Target schedule, subject to change