

# Kino to DeMoss-Petrie 138 Kilovolt (kV) Transmission Line Project



## **Open House #5 (Virtual)**

**Thursday, August 19, 2021  
6-7 p.m.**

# Kino to DeMoss-Petrie Transmission Line Project



## Agenda

- How to Submit Questions
- CEC Process Status
- Project Benefits
- Routes in CEC
- Route Addition
- TEP's Preferred Route
- Alternative 5 Visual Simulations
- Next Steps
- More Information
- Comment Deadline
- Comment Submittal
- Questions

# Kino to DeMoss-Petrie Transmission Line Project

## Asking Questions and Submitting Comments



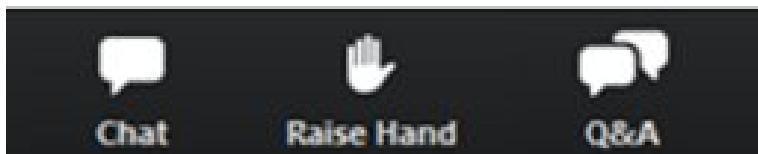
- TEP encourages attendees to ask questions. There will be a formal Q & A session at the end of the presentation.
- Other ways to learn and comment. Please visit: <https://www.tep.com/kino-to-demoss-petrie/>.
- Here you will find:
  - More information about the Project
  - Past meeting materials
  - Additional ways to comment

# Kino to DeMoss-Petrie Transmission Line Project

## Asking Questions and Submitting Comments During Virtual Meeting



- Asking a WRITTEN question:
  - Click the “Q&A” button
  - Type your question
  - Select “send”
  - Moderator will facilitate answering questions at the end of the presentation

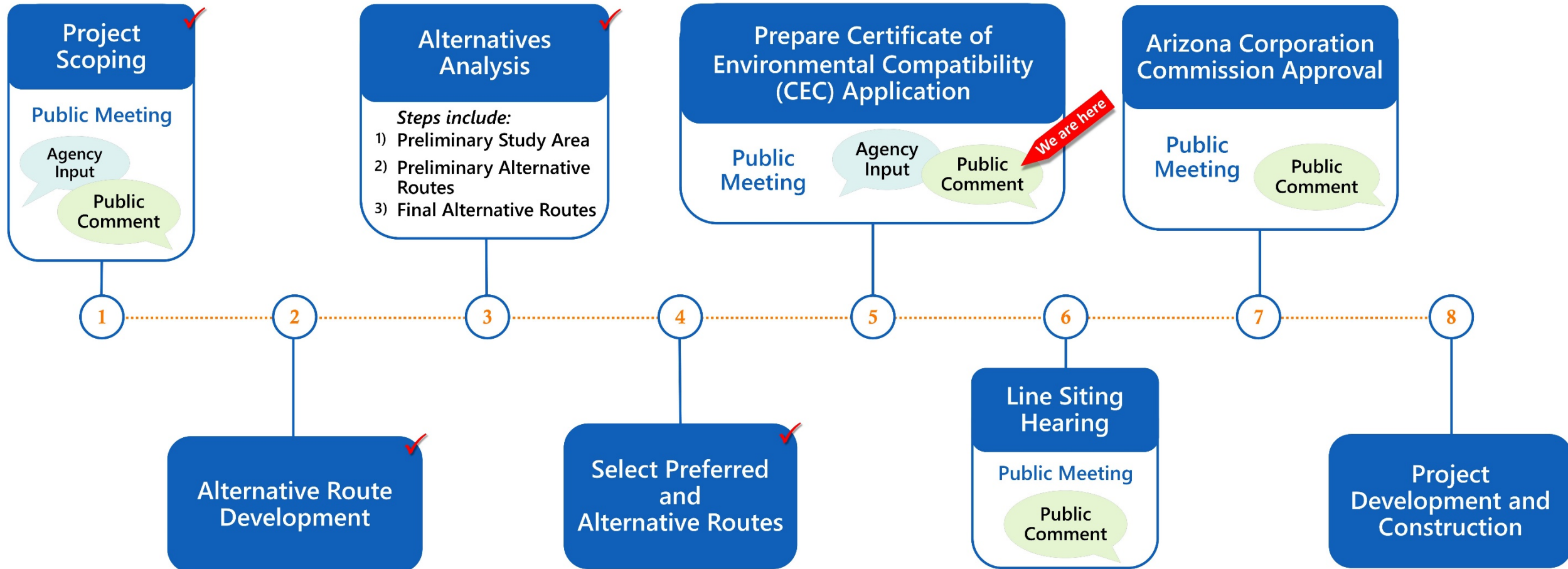


- Asking a VERBAL question:
  - Raise your hand using “Raise Hand” button or \*9 from the phone
  - Moderator will call your name if submitted online or call out the last 4 digits of your phone number
  - Unmute your microphone by clicking the unmute button (online) or by pressing \*6 (phone) to ask your question



# Kino to DeMoss-Petrie Transmission Line Project

## CEC Process Status



# Kino to DeMoss-Petrie Transmission Line Project



- **Stable voltage, shorter outages.** Lower-voltage feeder lines have reached or are approaching their capacity limitations.
- **Service for growing midtown energy needs.** Supports growing peak demand and future energy needs. Also provides for additional capacity which allows for more residential and commercial solar connections.
- **Improved electric reliability.** Design allows energy delivery to midtown from more than one direction.
- **Replacement of aging infrastructure.** Existing equipment is nearing the end of its useful life and should be replaced.
- **Support for the University of Arizona and Banner – University Medical Center.** Accommodates UA 100% clean energy project and Banner's increased energy demand.



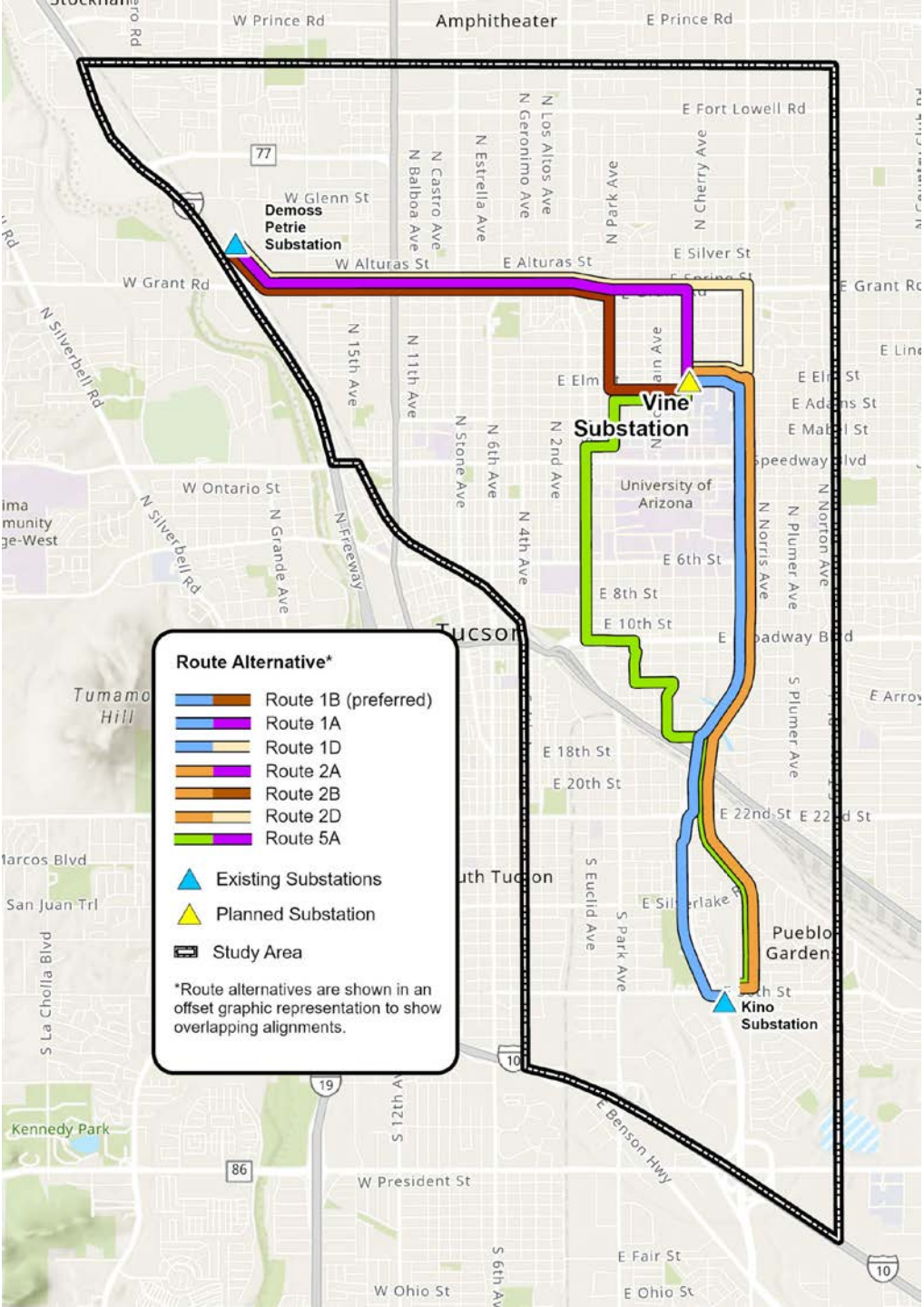
## Routes Submitted to the Arizona Corporation Commission

- TEP included 7 routes for consideration in its application. An additional route brought back for consideration minimizes the use of City of Tucson-designated Gateway Corridor Zones

# CEC Routes

## Route Overview

- 7 routes included in application for consideration by Power Plant & Line Siting Committee







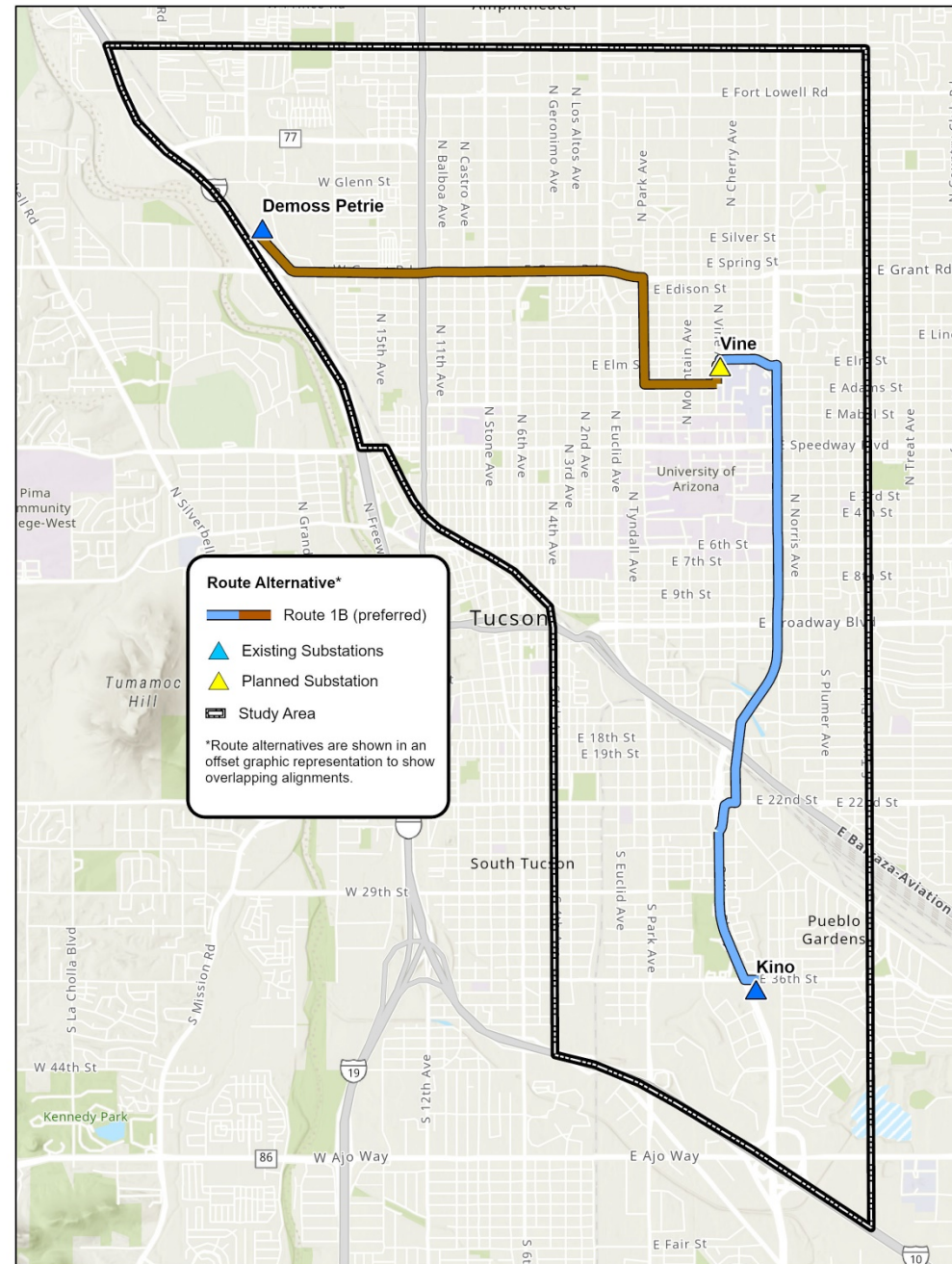
## **Route Addition Alternative Route 5A**

- Alternative Route 5A
  - Minimizes the use of Gateway Corridors



# CEC Routes

- Routes 1B
  - Route 1B is TEP's preferred route





## Visual Simulations

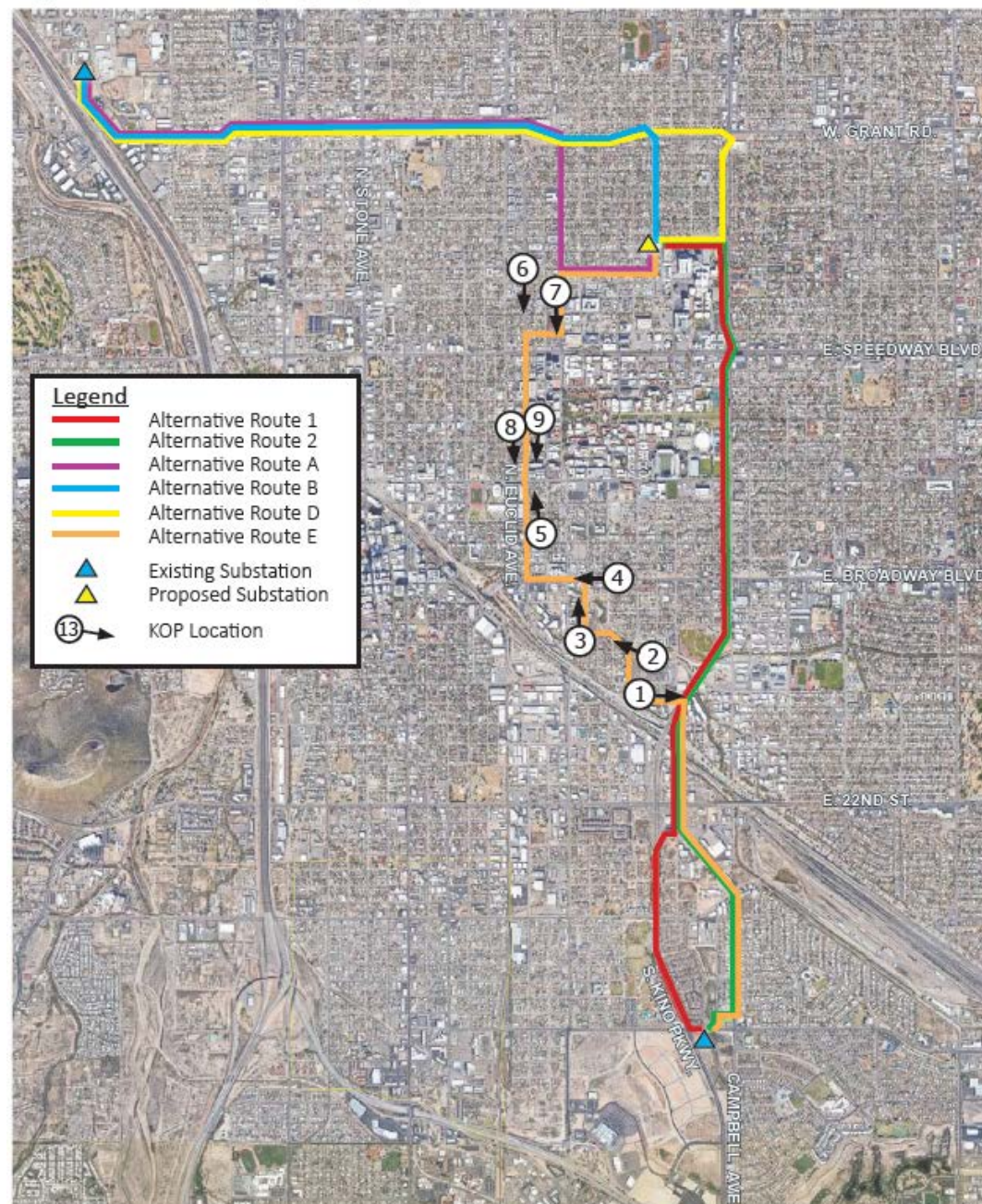


# Visual Simulations

Key Observation Points (KOP)

Key Map

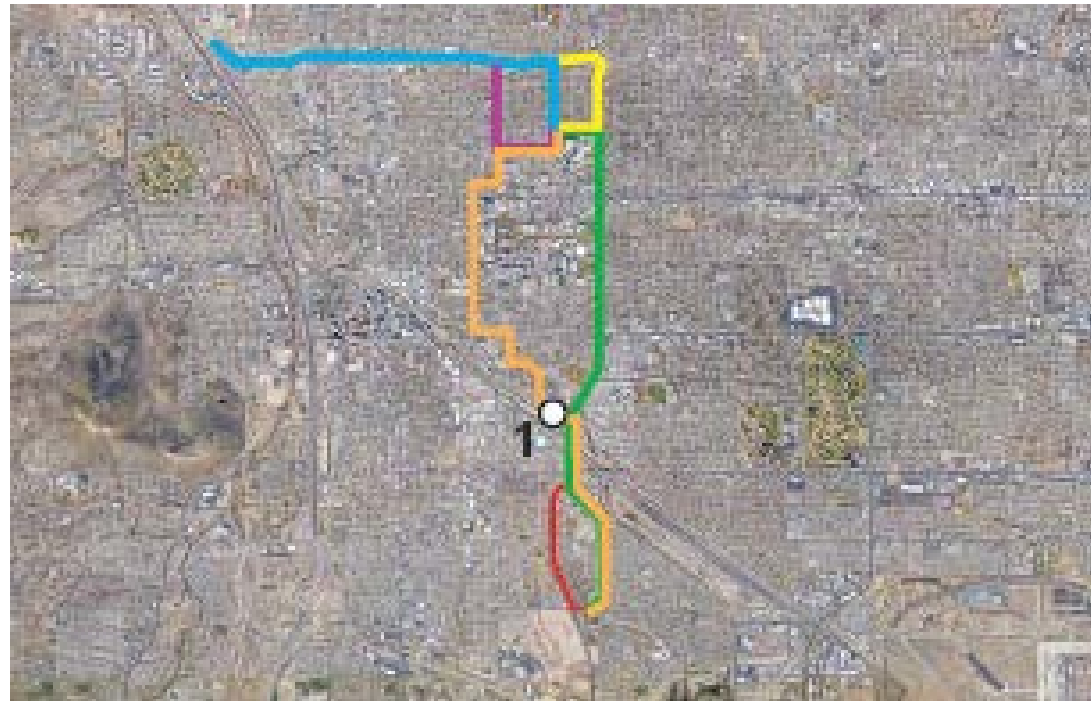
Key Observation Point (KOP) - Key Map





# KOP #1, Route 5

East 17<sup>th</sup> Street, looking east



# KOP #1, Route 5 Current Condition



# KOP #1, Route 5 Simulated Condition





# KOP #4, Route 5

East Broadway Blvd, looking west



# KOP #4, Route 5 Current Condition



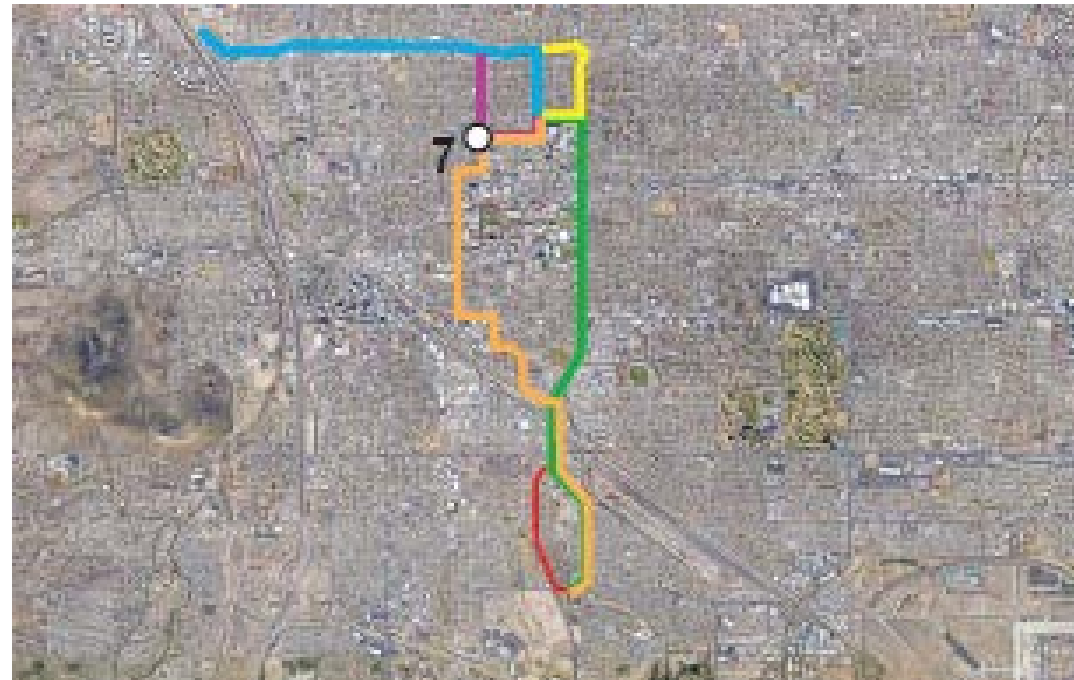


# KOP #4, Route 5 Simulated Condition



# KOP #7, Route 5

North Park Ave, looking south



# KOP #7, Route 5 Current Condition





# KOP #7, Route 5 Simulated Condition



- CEC application filed – August 10, 2021
- ACC LSC Hearing – September 13 – 27, 2021
  - Public Comment sessions scheduled for September 13, 2021 @ 5:30 pm
  - Public is encouraged to comment virtually
  - Virtual meeting information will be posted on project website prior to the hearing
- ACC Open Meeting – est. November 2021



# Kino to DeMoss-Petrie Transmission Line Project



## More Information

For more project information please visit the project webpage:

[www.tep.com/kino-to-demoss-petrie/](http://www.tep.com/kino-to-demoss-petrie/)

Here, you can:

- Find a recorded version of all previous Open House presentations
- Find a PDF of this Virtual Open House presentation
- Find past newsletters, public meeting communications and Community Working Group (CWG) materials
- Read commonly asked questions & answers
- Read comments from the public and the CWG, and TEP's responses

## Comment Deadline

There is no comment deadline – comments can be submitted up to and through the last day of the Line Siting hearing.

### How to submit comments after the meeting:

- Via voicemail at 1-833-523-0887, deje un mensaje en español al 1-833-655-0399
- Via email at [KINO2DMP@tep.com](mailto:KINO2DMP@tep.com)
- Via comment form at: <https://uns.wufoo.com/forms/z1eb494318gyjry/>
- By U.S. Mail to: P.O. Box 711, ATTN: Kino-DMP, Mail Stop RC131, Tucson, AZ 85701-0711



## Questions?