

Kino to DeMoss-Petrie 138 Kilovolt (kV) Transmission Line Project



Community Working Group #7 (Virtual)

**Wednesday, August 18, 2021
6-7 p.m.**

Kino to DeMoss-Petrie Transmission Line Project



Agenda

- How to Submit Questions
- CEC Process Status
- Project Benefits
- Route in CEC
- Route Addition
- TEP's Preferred Route
- Alternative 5 Visual Simulations
- Next Steps
- More Information
- Comment Deadline
- Comment Submittal
- Questions

Kino to DeMoss-Petrie Transmission Line Project

Asking Questions and Submitting Comments



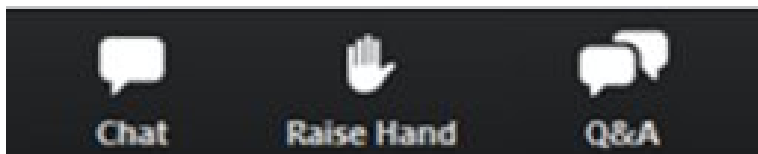
- TEP encourages attendees to ask questions. There will be a formal Q & A session at the end of the presentation.
- Other ways to learn and comment. Please visit: <https://www.tep.com/kino-to-demoss-petrie/>.
- Here you will find:
 - More information about the Project
 - Past meeting materials
 - Additional ways to comment

Kino to DeMoss-Petrie Transmission Line Project

Asking Questions and Submitting Comments During Virtual Meeting



- Asking a WRITTEN question:
 - Click the “Q&A” button
 - Type your question
 - Select “send”
 - Moderator will facilitate answering questions at the end of the presentation

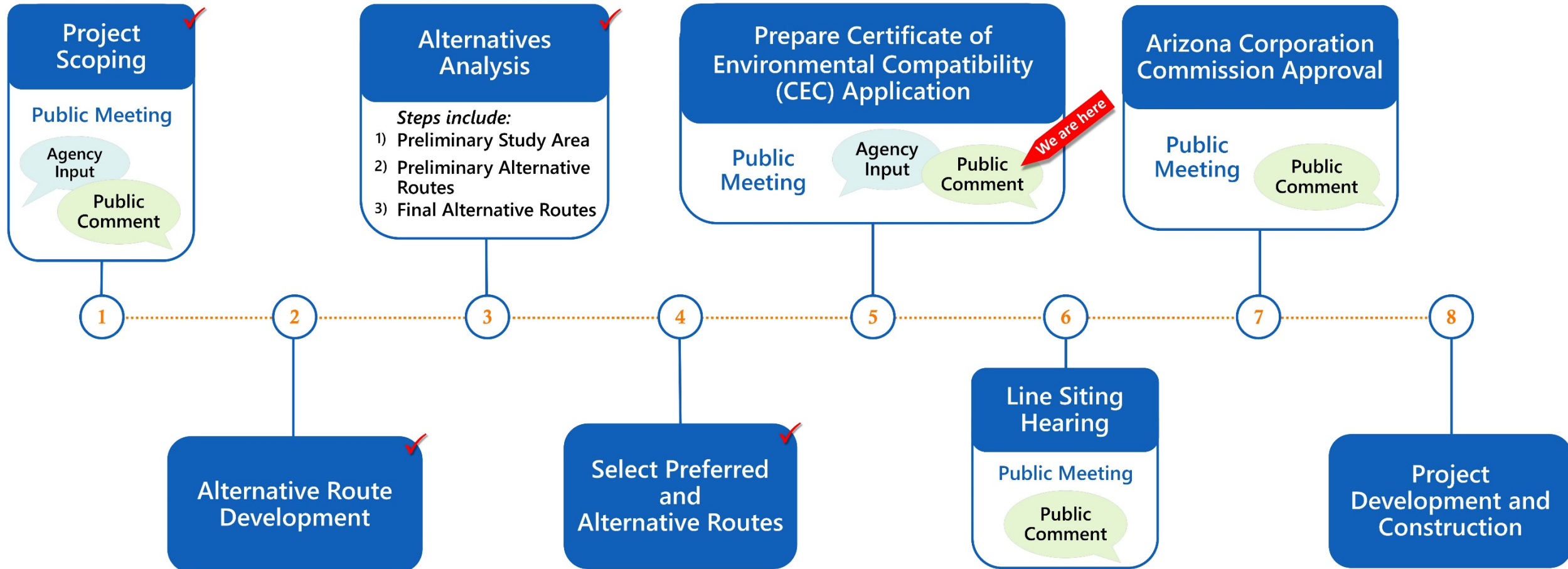


- Asking a VERBAL question:
 - Raise your hand using “Raise Hand” button or *9 from the phone
 - Moderator will call your name if submitted online or call out the last 4 digits of your phone number
 - Unmute your microphone by clicking the unmute button (online) or by pressing *6 (phone) to ask your question



Kino to DeMoss-Petrie Transmission Line Project

CEC Process Status



Kino to DeMoss-Petrie Transmission Line Project



- **Stable voltage, shorter outages.** Lower-voltage feeder lines have reached or are approaching their capacity limitations.
- **Service for growing midtown energy needs.** Supports growing peak demand and future energy needs. Also provides for additional capacity which allows for more residential and commercial solar connections.
- **Improved electric reliability.** Design allows energy delivery to midtown from more than one direction.
- **Replacement of aging infrastructure.** Existing equipment is nearing the end of its useful life and should be replaced.
- **Support for the University of Arizona and Banner – University Medical Center.** Accommodates UA 100% clean energy project and Banner's increased energy demand.

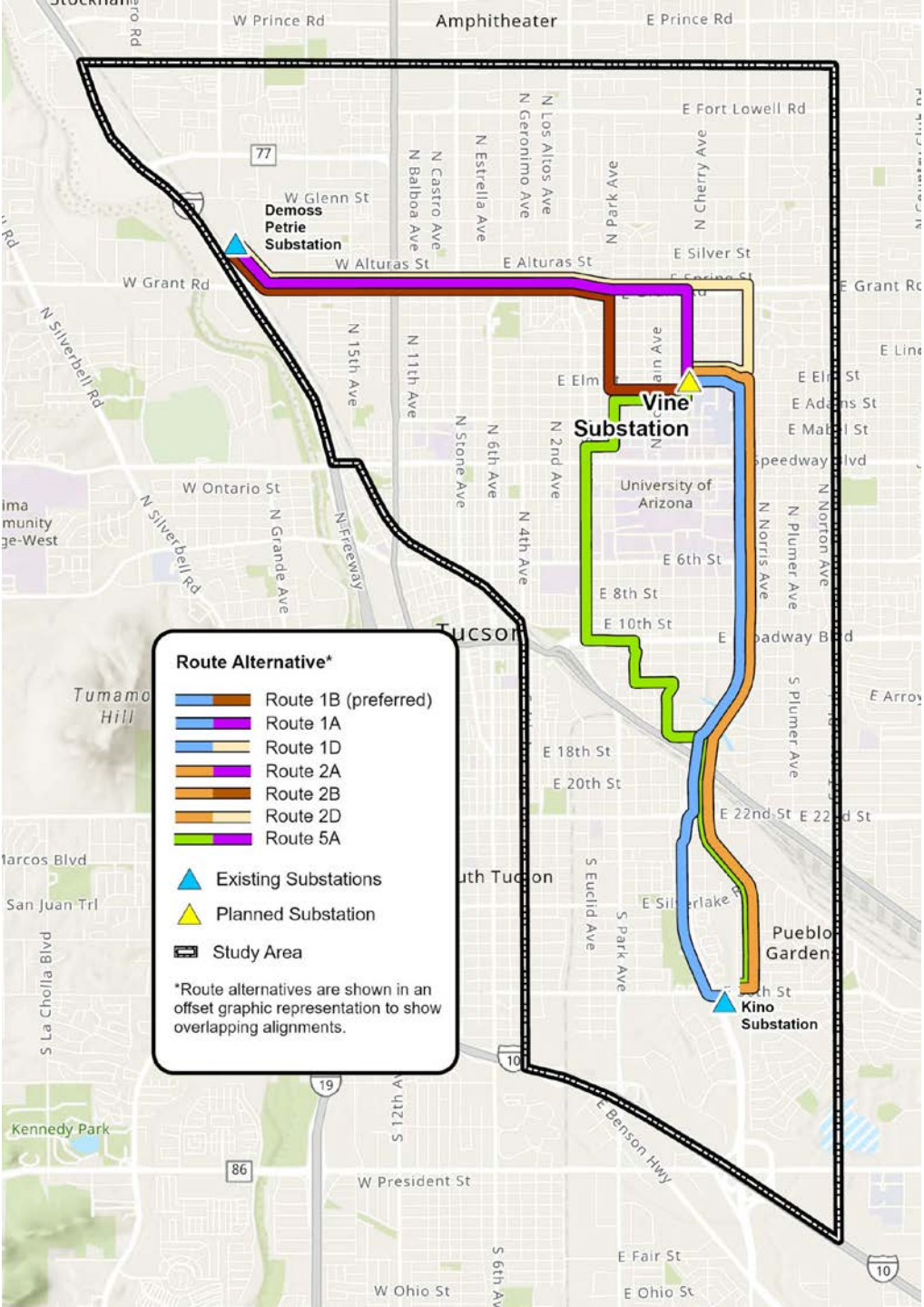
Routes Submitted to the Arizona Corporation Commission

- TEP presented 7 routes for consideration in its application. An additional route brought back for consideration minimizes the use of City of Tucson-designated Gateway Corridor Zones

CEC Routes

Route Overview

- 7 routes included in application for consideration by Power Plant & Line Siting Committee

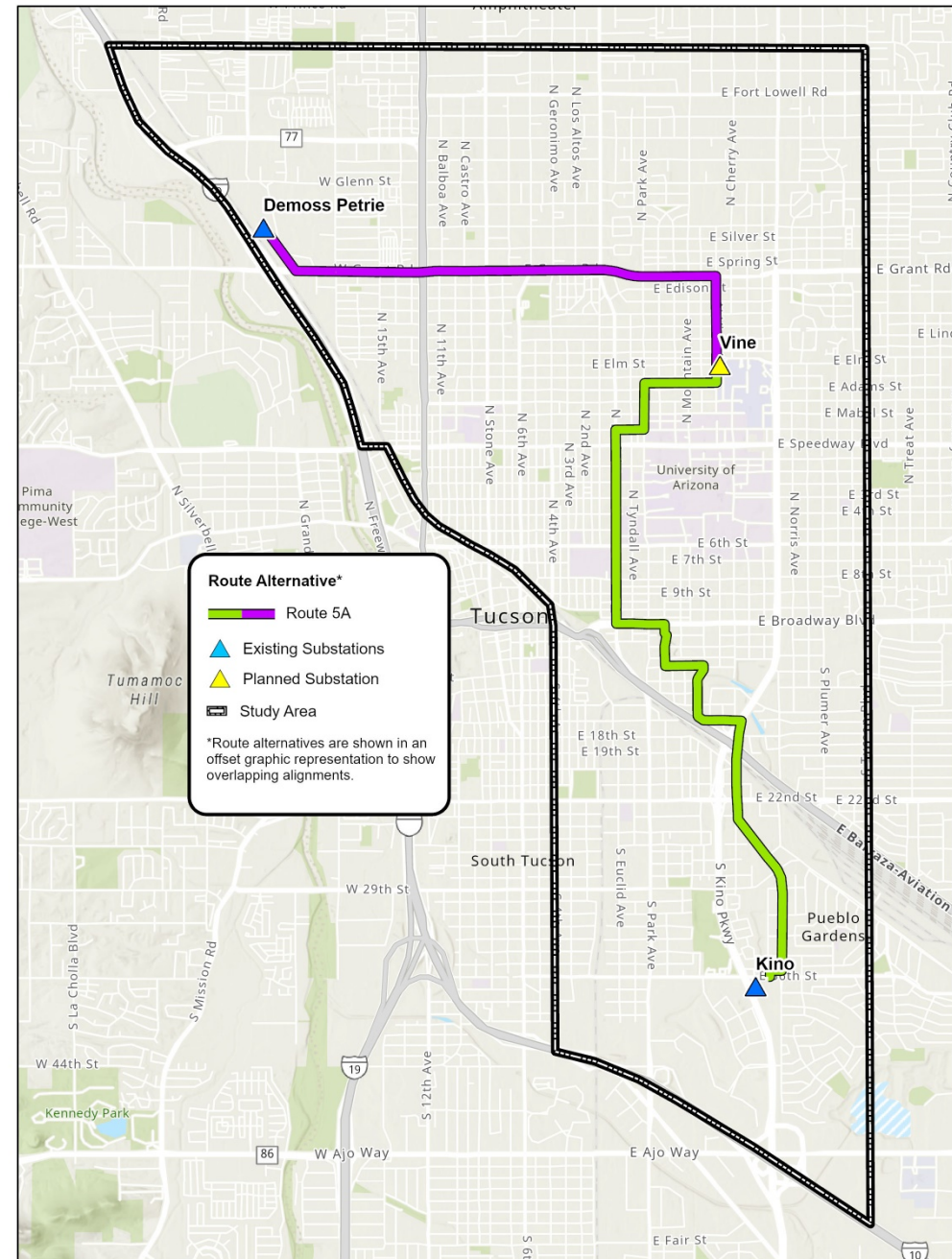




Route Addition Alternative Route 5A

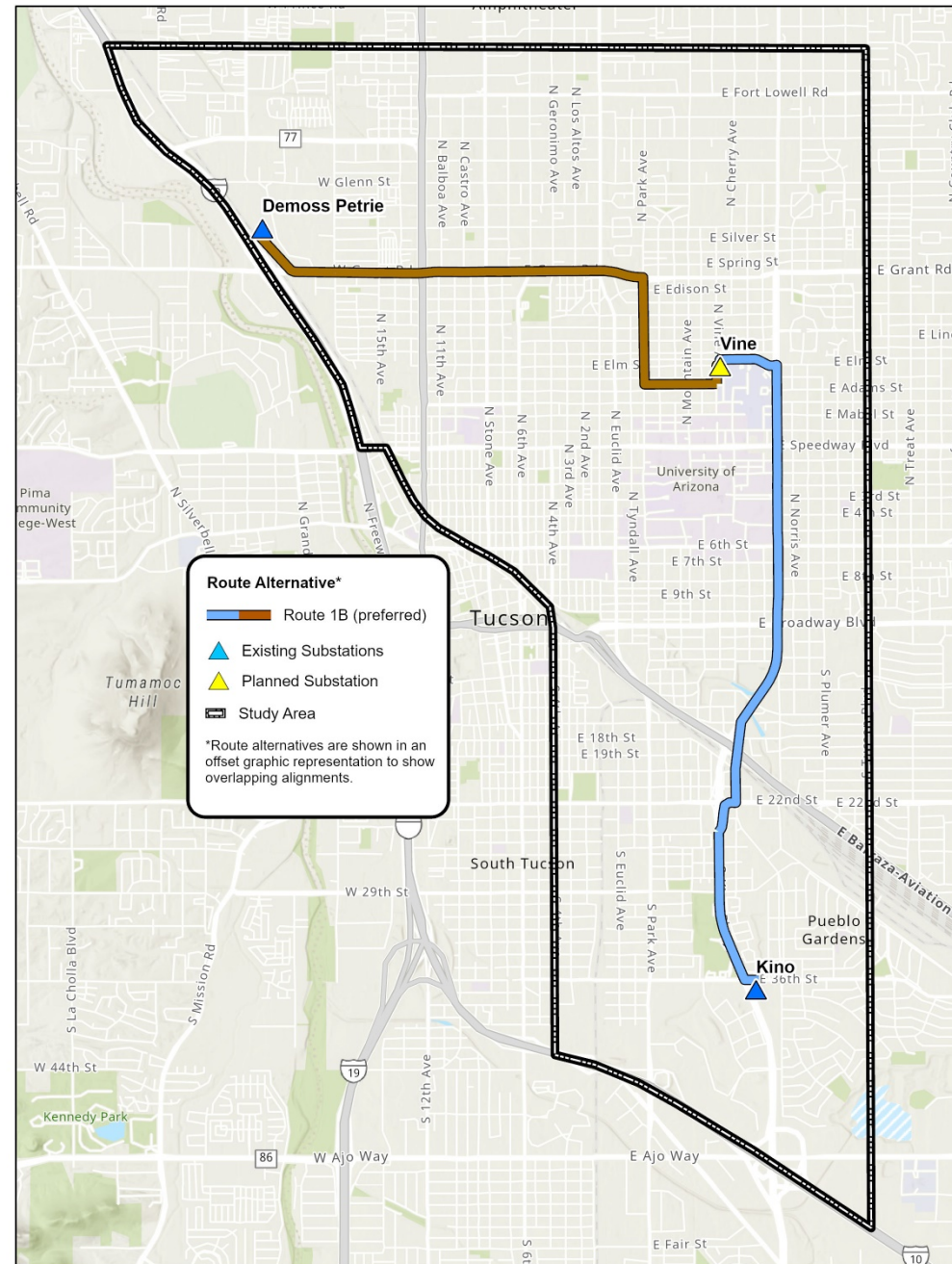
CEC Routes

- Alternative Route 5A
 - Minimizes the use of Gateway Corridors



CEC Routes

- Routes 1B
 - Route 1B is TEP's preferred route



CEC Routes

Preferred Route 1B

Route 1 over Route 2

- Within 150 feet of the Alternative, Alternative 1 impacts fewer residences than Alternative 2
- South of where Alternative 1 & 2 merge, the houses do not face Alternative 1 and do face Alternative 2
- Kino is an arterial road whereas South Campbell is a collector
- Avoids the South Campbell Avenue Median Landscape, between 36th Street and Silverbell Road
- Fewer neighborhood impacts
- Supported by the Pueblo Gardens neighborhood

Route B over Routes A & D

- Uses the greatest amount of existing TEP utility corridors
- It is TEP's opinion that it has the least impact on the Jefferson Park Neighborhood
- Alternative B received the most "preferred" Alternative D would result in two transmission lines along Elm Road and received the most "disliked" comments





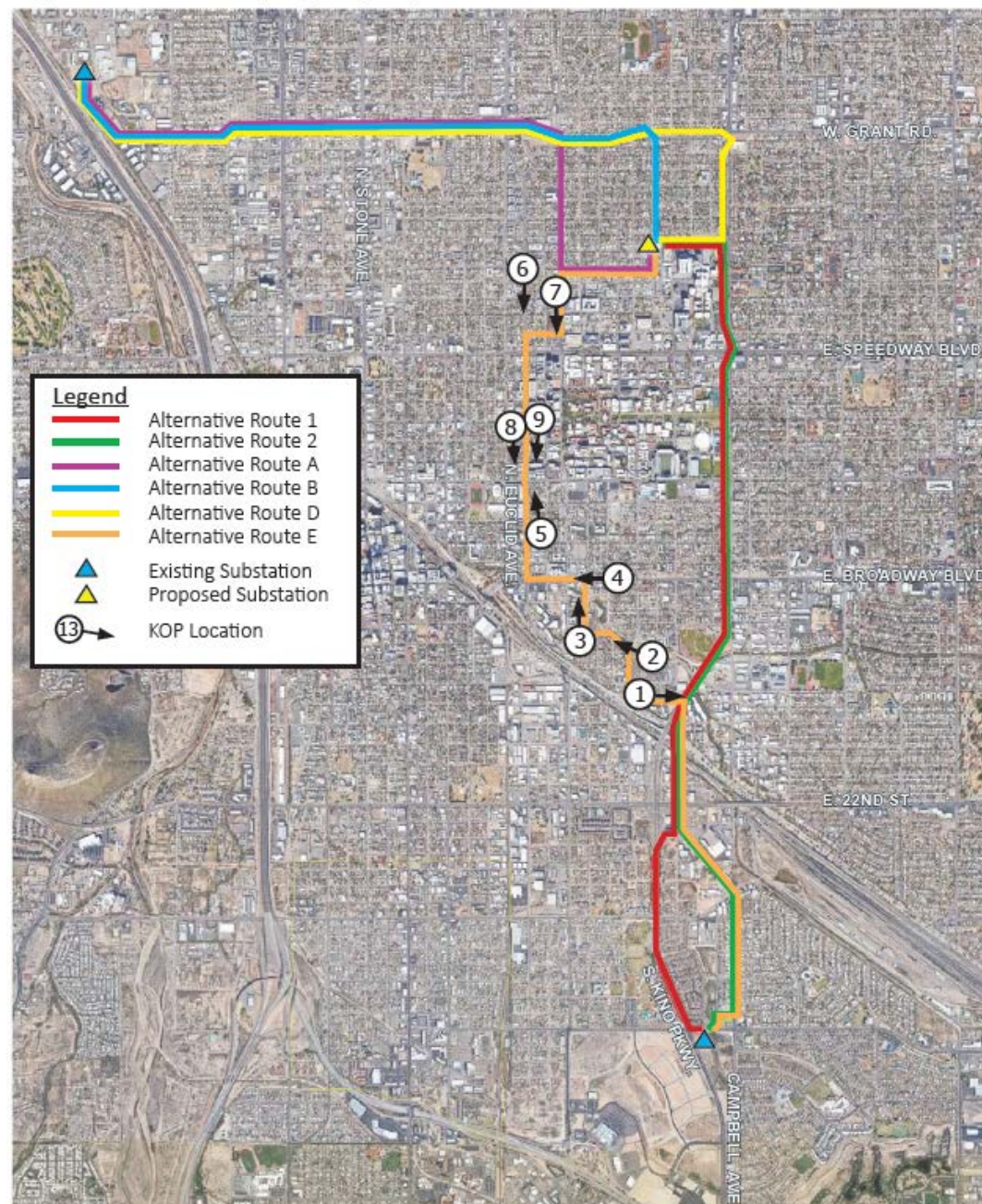
Visual Simulations

Visual Simulations

Key Observation Points (KOP)

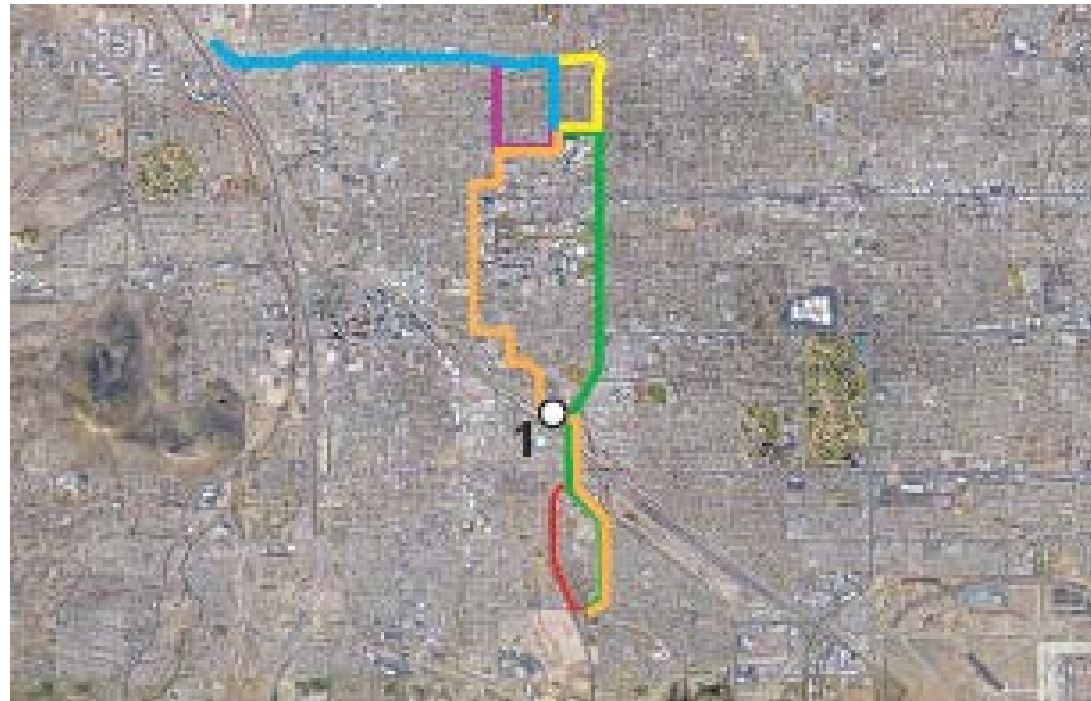
Key Map

Key Observation Point (KOP) - Key Map



KOP #1, Route 5

East 17th Street, looking east



KOP #1, Route 5 Current Condition



KOP #1, Route 5 Simulated Condition



KOP #4, Route 5

East Broadway Blvd, looking west



KOP #4, Route 5 Current Condition



KOP #4, Route 5 Simulated Condition



KOP #7, Route 5

North Park Ave, looking south



KOP #7, Route 5 Current Condition



KOP #7, Route 5 Simulated Condition



- CEC application filed – August 10, 2021
- ACC LSC Hearing – September 13 – 27, 2021
 - Public Comment sessions scheduled for September 13, 2021 @ 5:30 pm
 - Public is encouraged to comment virtually
 - Virtual meeting information will be posted on project website prior to the hearing
- ACC Open Meeting – est. November 2021

Kino to DeMoss-Petrie Transmission Line Project



More Information

For more project information please visit the project webpage:

www.tep.com/kino-to-demoss-petrie/

Here, you can:

- Find a recorded version of all previous Open House presentations
- Find a PDF of this Virtual Open House presentation
- Find past newsletters, public meeting communications and Community Working Group (CWG) materials
- Read commonly asked questions & answers
- Read comments from the public and the CWG, and TEP's responses

Comment Deadline

There is no comment deadline – comments can be submitted up to and through the last day of the Line Siting hearing.

How to submit comments after the meeting:

- Via voicemail at 1-833-523-0887, deje un mensaje en español al 1-833-655-0399
- Via email at KINO2DMP@tep.com
- Via comment form at: <https://uns.wufoo.com/forms/z1eb494318gyjry/>
- By U.S. Mail to: P.O. Box 711, ATTN: Kino-DMP, Mail Stop RC131, Tucson, AZ 85701-0711



Questions?