

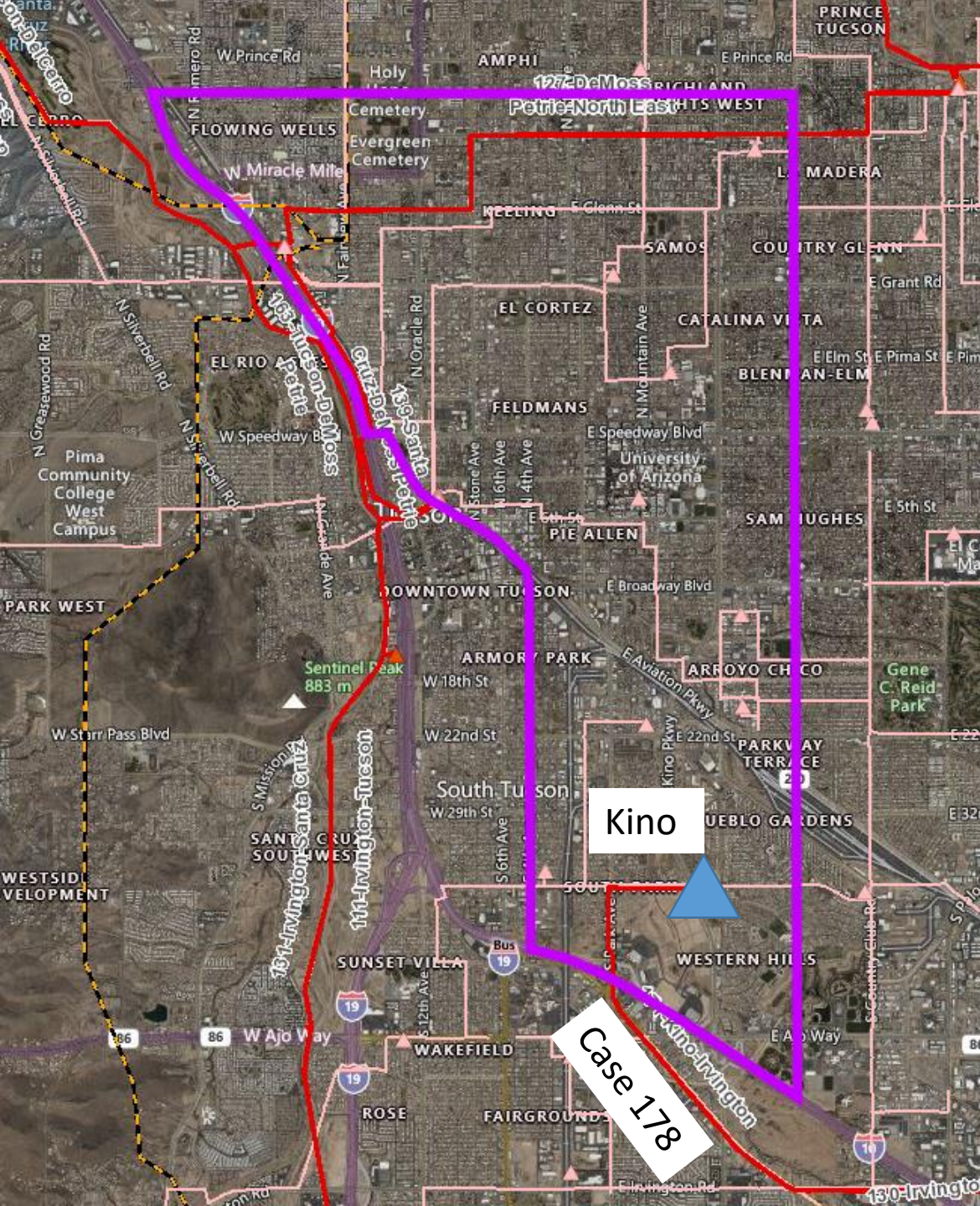
# Kino to DeMoss-Petrie 138 Kilovolt (kV) Transmission Line Project



## Pre-filing Conference (Virtual)

**Presented:  
Thursday, July 22, 2021  
3:00 – 4:00 p.m.**

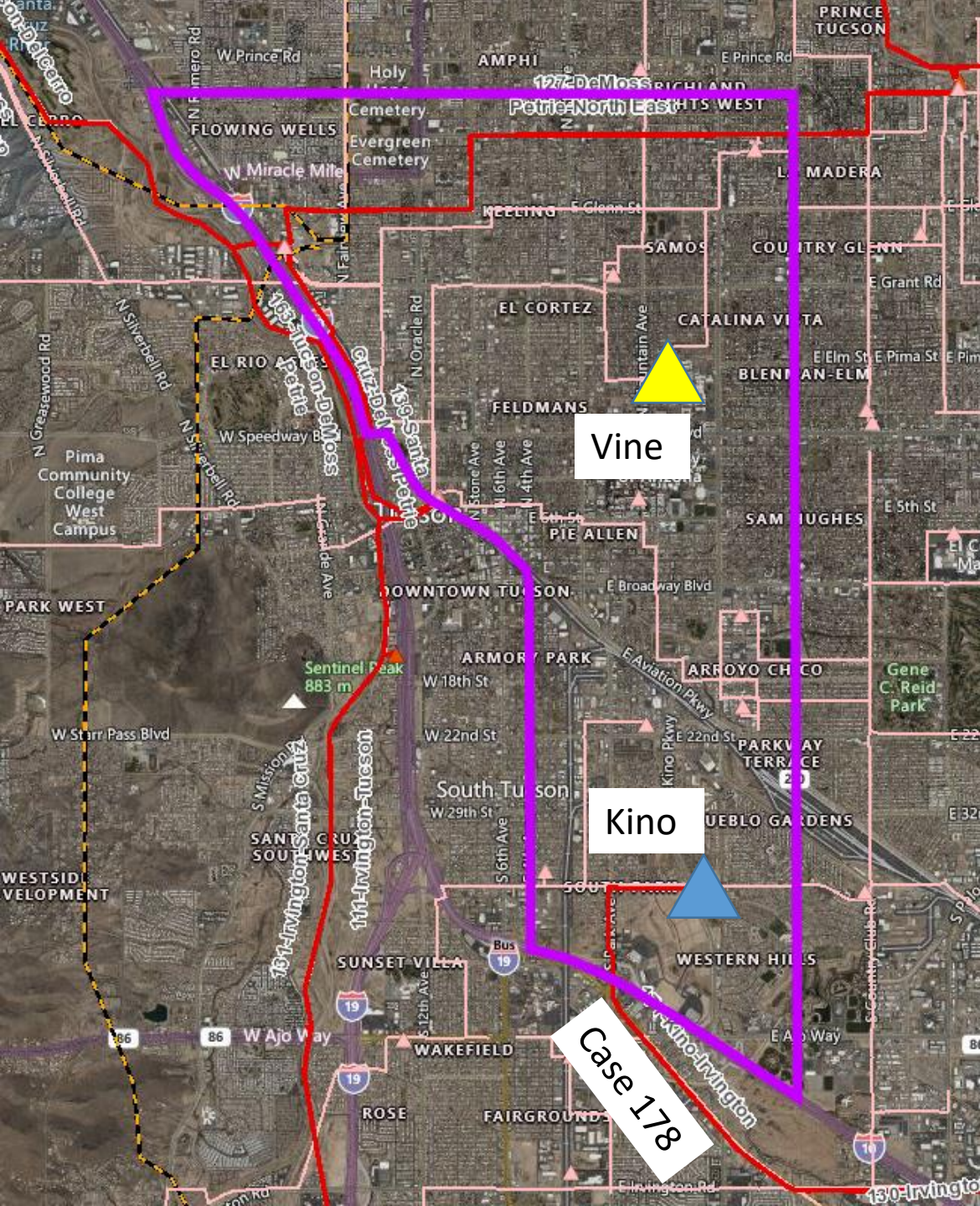
**Prefiling  
Exhibit No. 1  
07-22-2021**



# Project Overview

- New single circuit 138 kV transmission line of approximately 7.0 – 8.0 miles
- Will connect TEP's Kino Substation to its planned Vine Substation to its DeMoss-Petrie (DMP) Substation
- Continuation of Irvington – Kino Project (Case 178, Decision No. 76915)
- Estimated in service: 2024

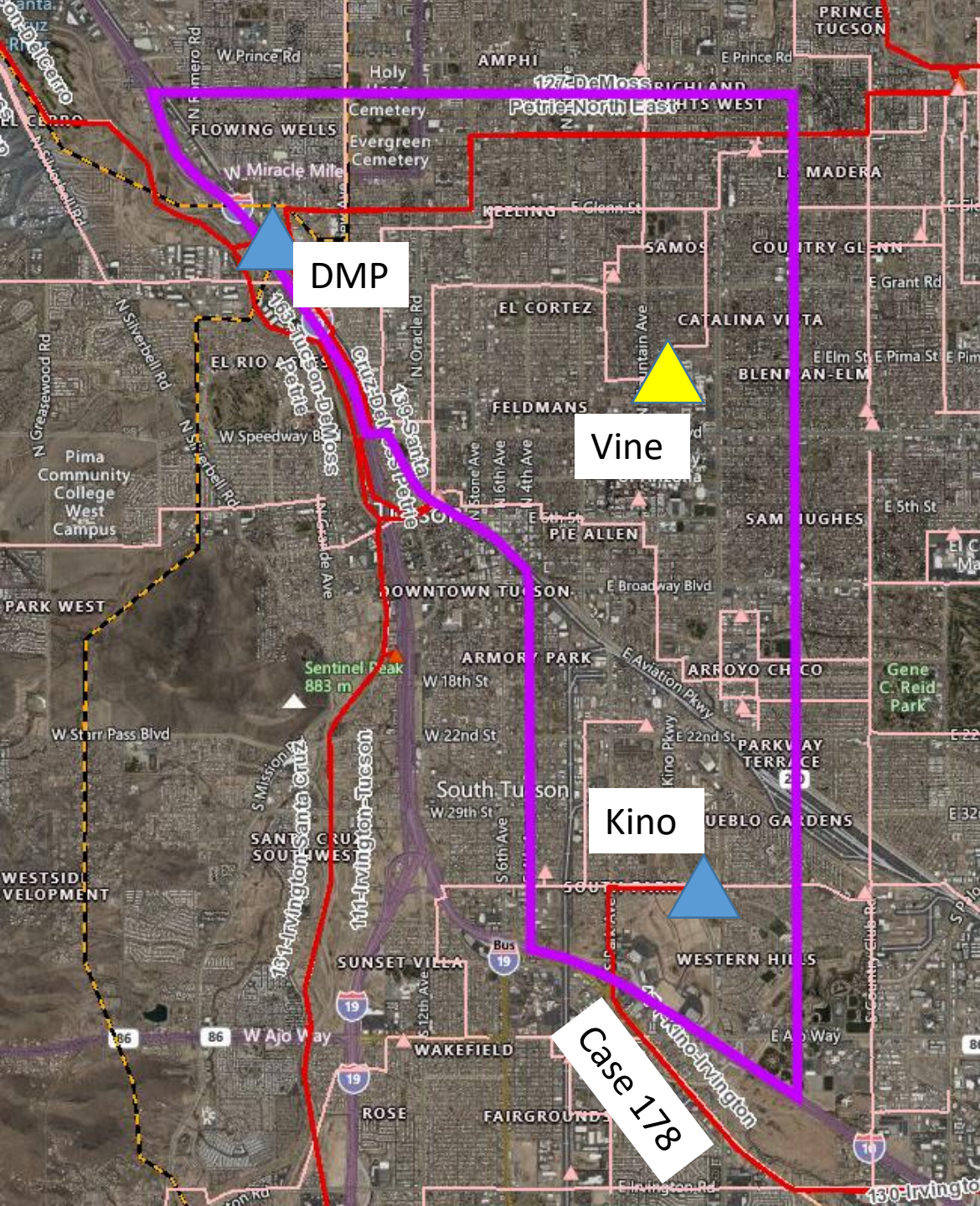




# Project Overview

- New single circuit 138 kV transmission line of approximately 7.0 – 8.0 miles
- Will connect TEP's Kino Substation to its planned Vine Substation to its DeMoss-Petrie (DMP) Substation
- Continuation of Irvington – Kino Project (Case 178, Decision No. 76915)
- Estimated in service: 2024





# Project Overview

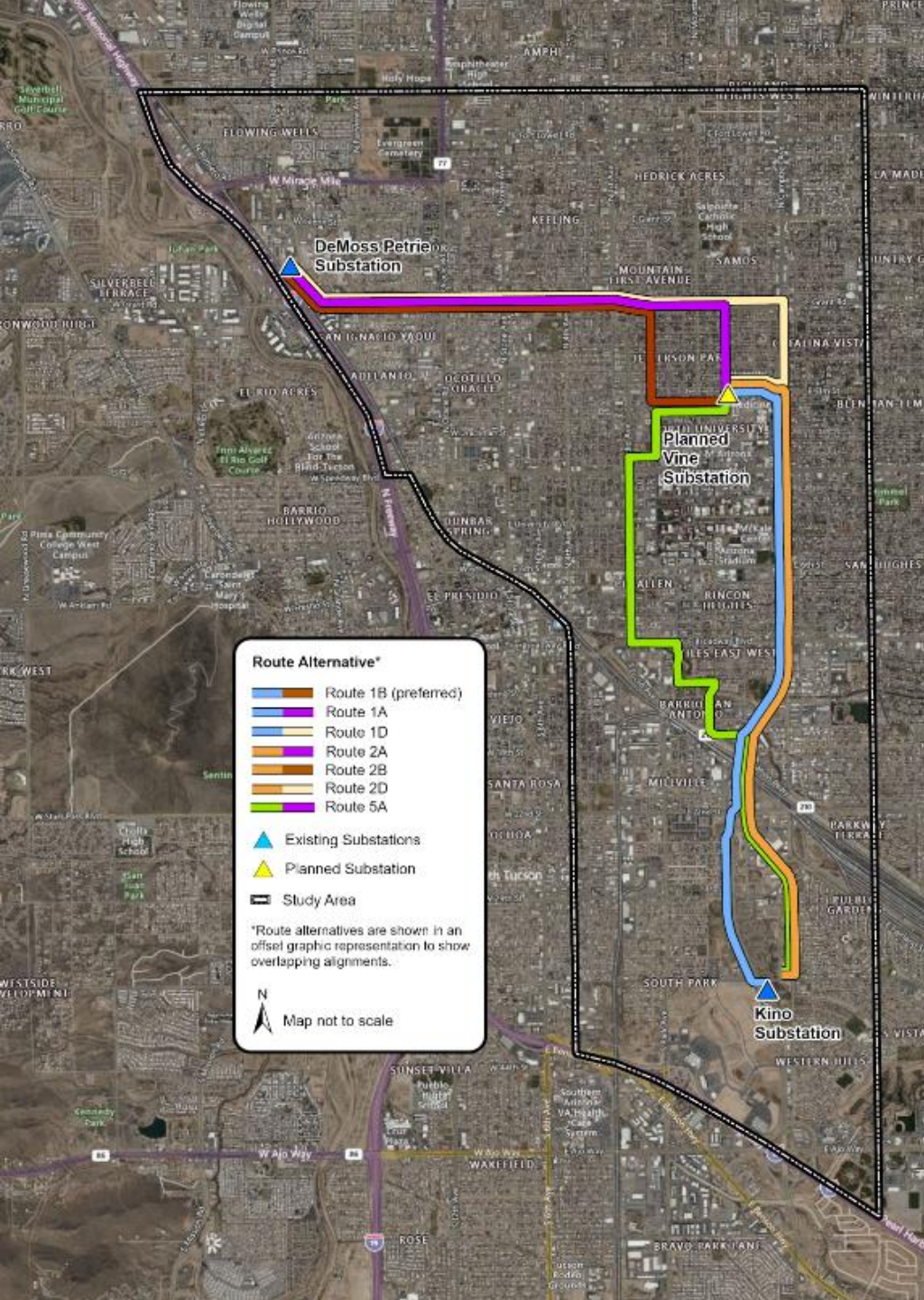
- New single circuit 138 kV transmission line of approximately 7.0 – 8.0 miles
- Will connect TEP's Kino Substation to its planned Vine Substation to its DeMoss-Petrie (DMP) Substation
- Continuation of Irvington – Kino Project (Case 178, Decision No. 76915)
- Estimated in service: 2024



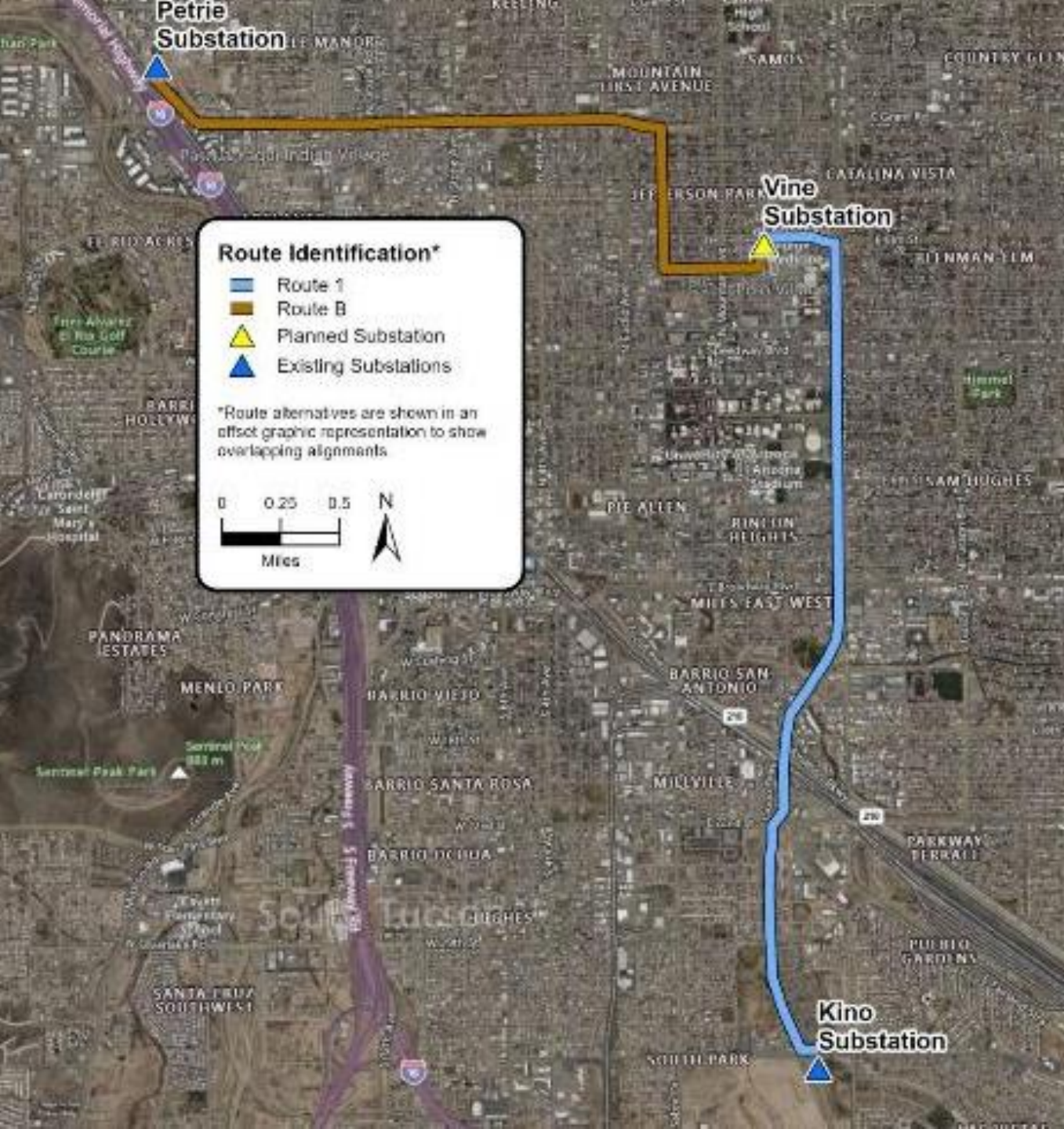
# Routes Included in Application

7 Routes to be included in application

- Route 5A was removed from consideration in October 2020
- Added back due to concerns with Gateway Corridor Zoning
- Order of preference of routes is;
  - 1B
  - 2B
  - 1A
  - 2A
  - 1D
  - 2D
  - 5A







## Preferred Route Reasoning

- Balances input from neighborhoods.
- Received the most “preferred” and the least “disliked”.
- Fewer neighborhood impacts.
- Uses the greatest amount of existing TEP utility corridors.

# Kino to DeMoss-Petrie Transmission Line Project

## Project Benefits



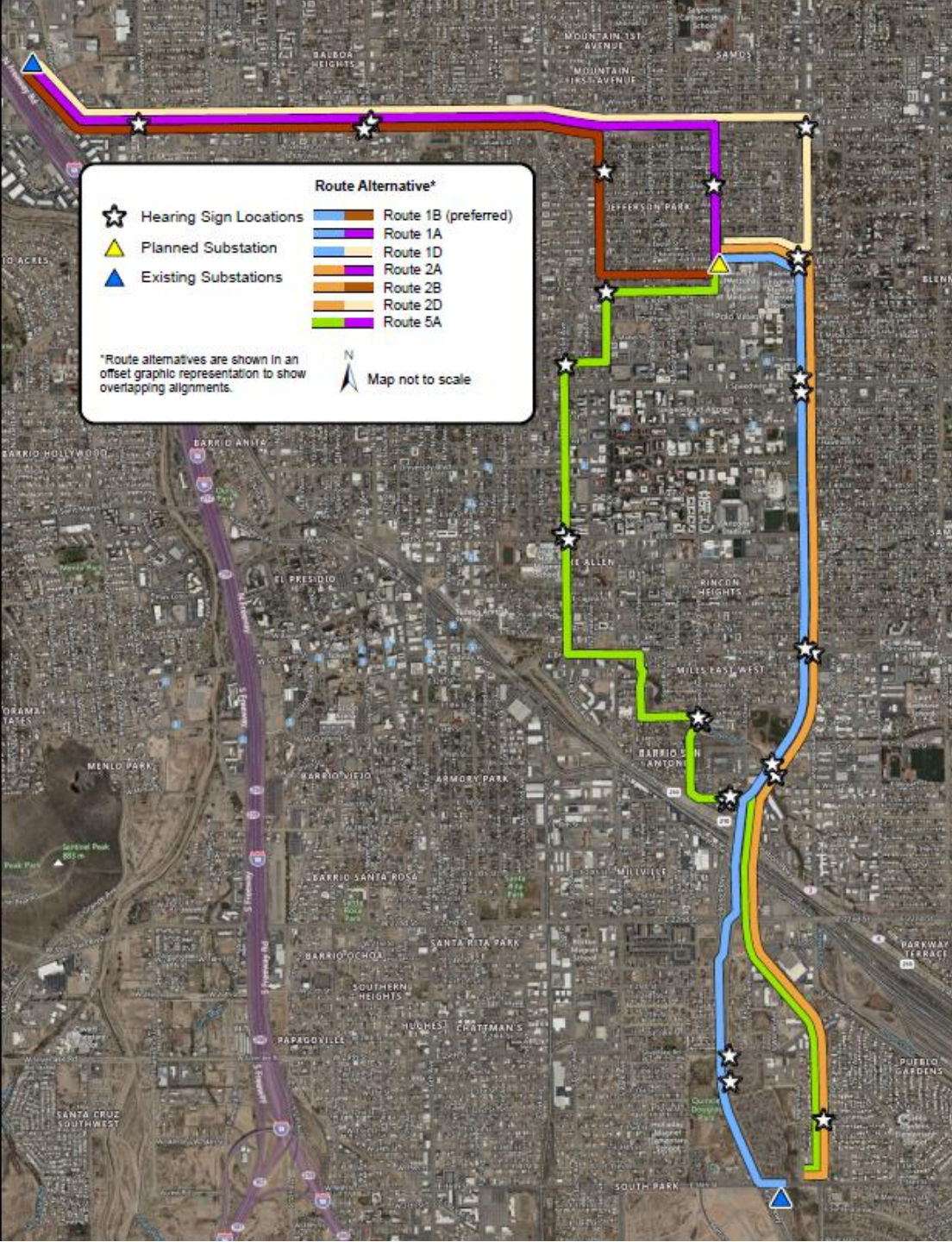
- Stable voltage, shorter outages.
- Service for growing midtown energy needs
- Improved electric reliability
- Replacement of aging infrastructure
- Support for the University of Arizona and Banner –University Medical Center

# Kino to DeMoss-Petrie Transmission Line Project





# Sign Locations



- 25 total signs to be placed
- Use existing structures to help with sign placement (i.e., poles, substation walls)



Thank You