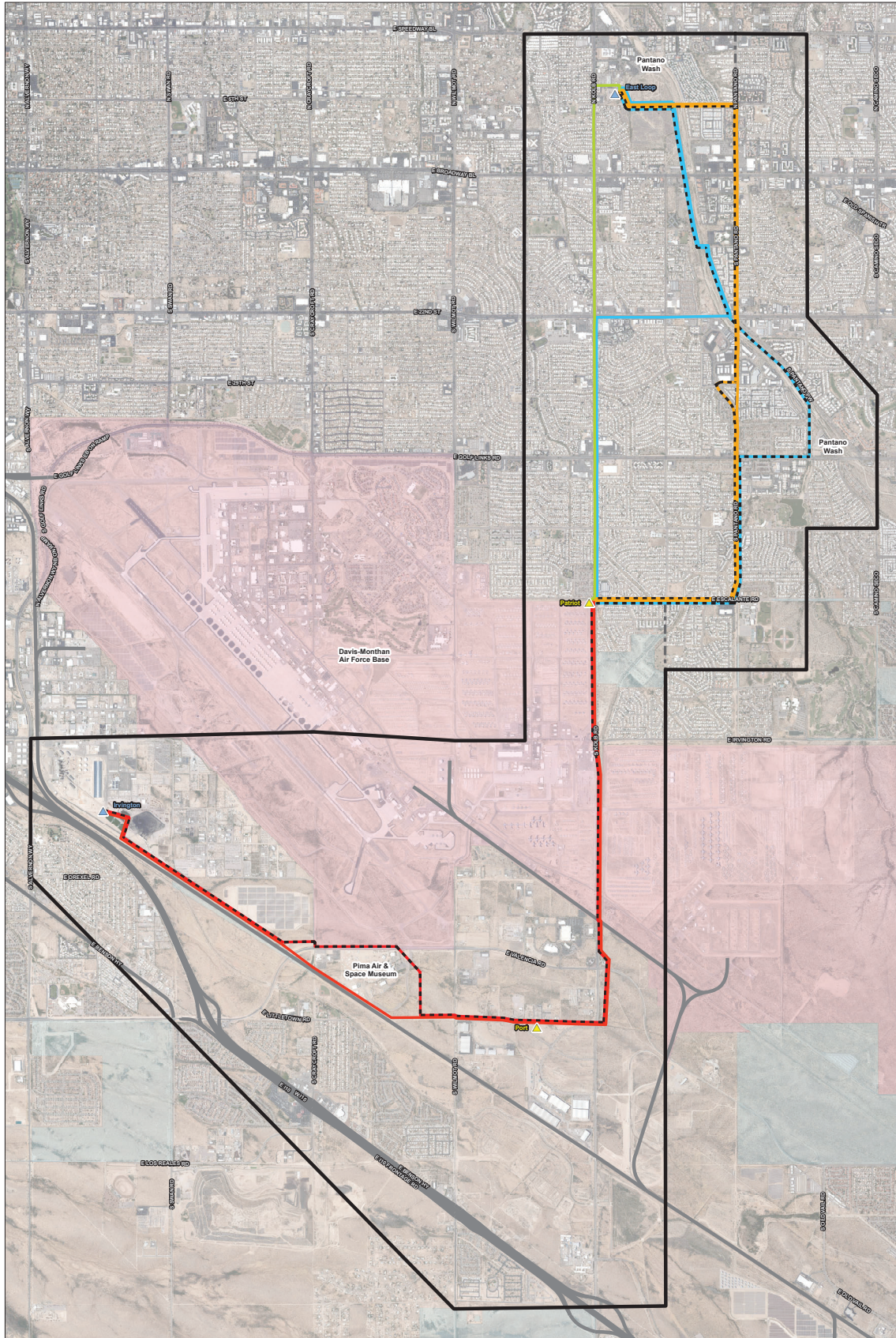


# Irvington-East Loop Transmission Line



**TEP**  
Tucson Electric Power  
Irvington to East Loop 138kV  
Transmission Line Project  
Revised Study Area and  
Routes

- |                      |                      |
|----------------------|----------------------|
| Irvington to Patriot | Patriot to East Loop |
| Alternative 1        | Alternative A        |
| Alternative 2        | Alternative B1       |
|                      | Alternative B2       |
|                      | Alternative C1       |
|                      | Alternative C2       |
- 
- |                                  |                          |                      |
|----------------------------------|--------------------------|----------------------|
| ▲ Planned Substations            | ■ Preliminary Study Area | ■ Surface Management |
| ▲ Existing/Approved Substations  | ■ Revised Study Area     | ■ Military           |
| ■ Exclusion Zone (UPRR and ADOT) |                          | ■ Private (No Color) |
|                                  |                          | ■ State              |



Route Alternatives are graphic representations, please refer to the newsletter text for detailed routing.

Source: 2018 TEP UPRR, BLM, and Pima County GIS. Prepared by TEP and Pima County GIS. The map is for planning purposes only. TEP and UPRR make no warranty of its accuracy.

