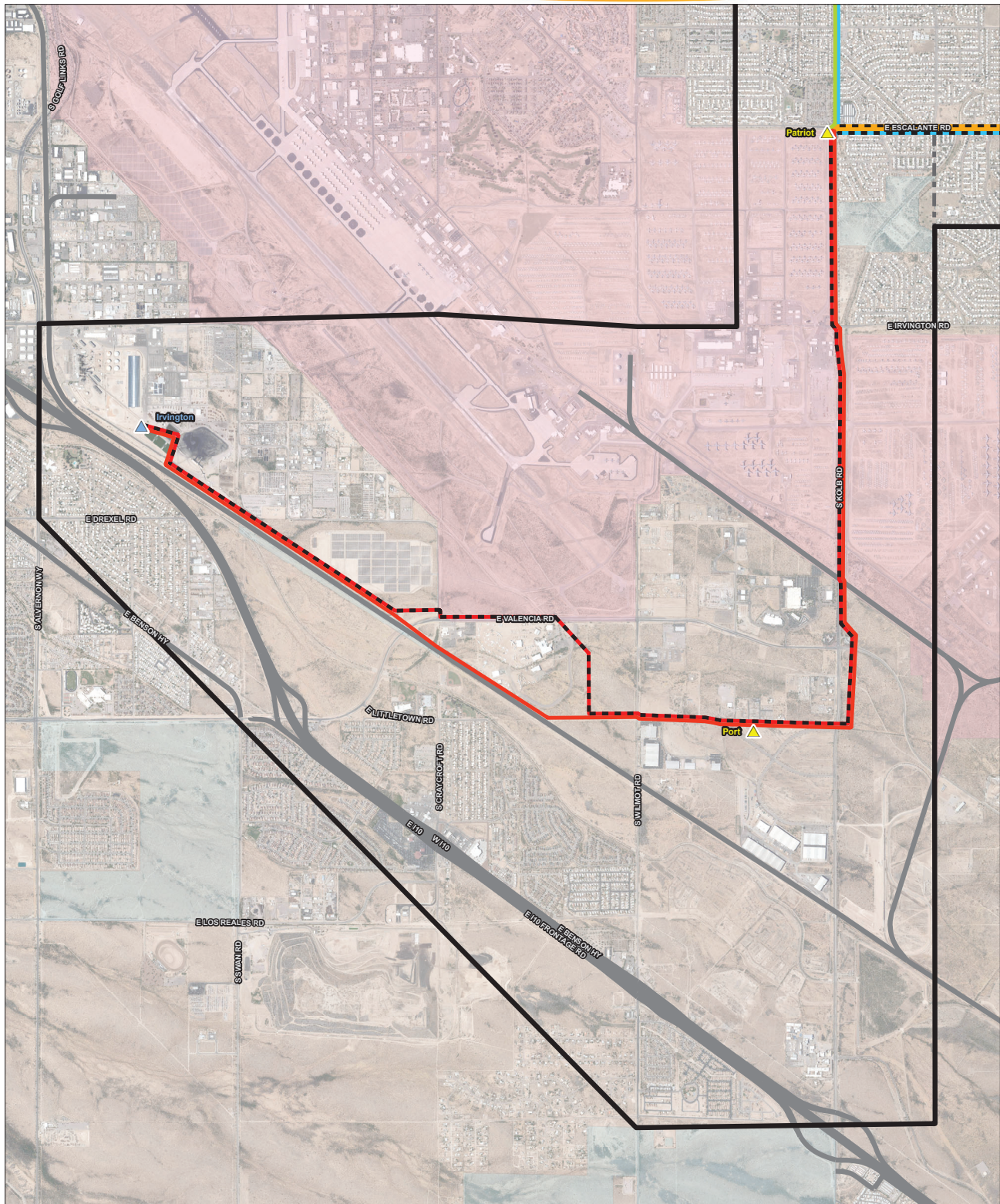
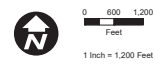
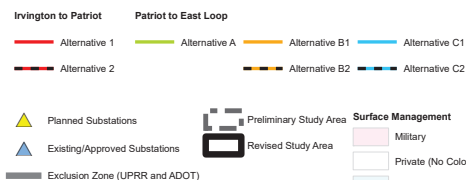


Irvington-East Loop Transmission Line (South)



**Irvington to East Loop 138kV
Transmission Line Project**

**Revised Study Area and
Routes (South)**



Route Alternatives are graphic representations, please refer to the newsletter text for detailed routing.

Source: ESRI, TEP, URS, BLM, and Pima County GIS.
Projection: NAD 1983 UTM Zone 12N
Datum: NAD 1983
Base Map: PANG Imagery 2015

This map is for planning purposes only. TEP and URS Energy make no warranty of its accuracy.

