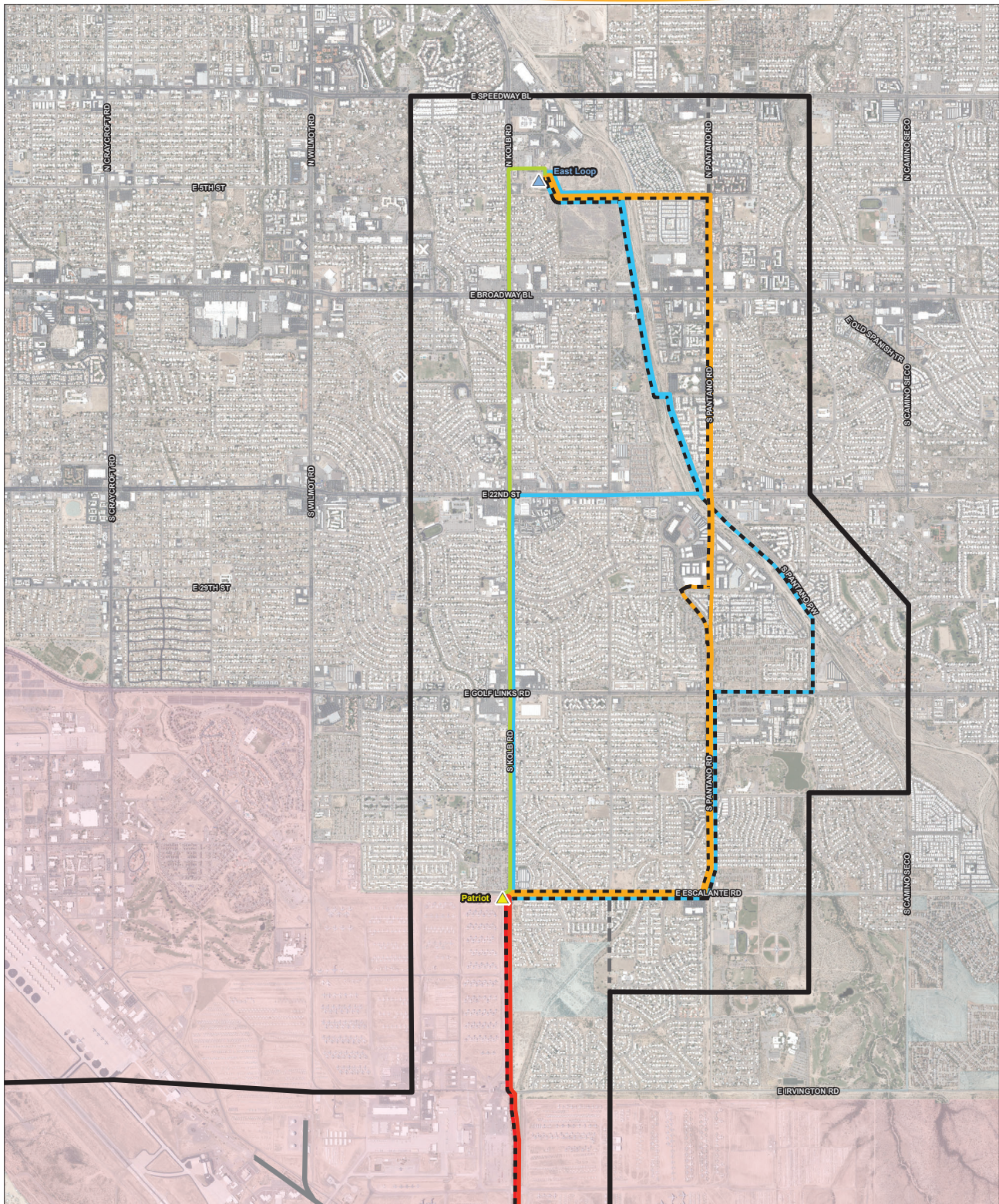


Irvington-East Loop Transmission Line (North)



Irvington to East Loop 138kV Transmission Line Project

Revised Study Area and Routes (North)

<p>Irvington to Patriot</p> <p>Alternative 1 (Red line)</p> <p>Alternative 2 (Red dashed line)</p>	<p>Patriot to East Loop</p> <p>Alternative A (Green line)</p> <p>Alternative B1 (Yellow line)</p> <p>Alternative B2 (Yellow dashed line)</p> <p>Alternative C1 (Blue line)</p> <p>Alternative C2 (Cyan line)</p>	<p>Planned Substations (Yellow triangle)</p> <p>Existing/Approved Substations (Blue triangle)</p> <p>Exclusion Zone (UPRR and ADOT) (Black line)</p>	<p>Preliminary Study Area (Black outline)</p> <p>Revised Study Area (Thick black outline)</p>	<p>Surface Management</p> <p>Military (Pink box)</p> <p>Private (No Color) (White box)</p> <p>State (Light blue box)</p>
---	---	---	---	---

0 600 1,200 Feet

1 inch = 1,200 Feet

Route Alternatives are graphic representations, please refer to the newsletter text for detailed routing.

Source: ESRI, TEP, URS, BLM, and Pima County GIS. Projection: NAD 1983 UTM Zone 12N. Basemap: PNG Imagery 2015.

This map is for planning purposes only. TEP and URS Energy make no warranty of its accuracy.