

# Tucson Electric Power Cottonwood 138 kV Substation

Special Exception Land Use Permit

---

NEIGHBORHOOD MEETING – JUNE 22, 2022

# Introductions

---

Chris Ortiz y Pino, Land Planner, Land Resources

Mike Baruch, Supervisor Engineering Project Manager

Amanda Wittenborn, Engineering Project Manager

Miranda Jackson, Civil/Transmission Engineer

Kevin Letendre, Civil Engineer Consultant

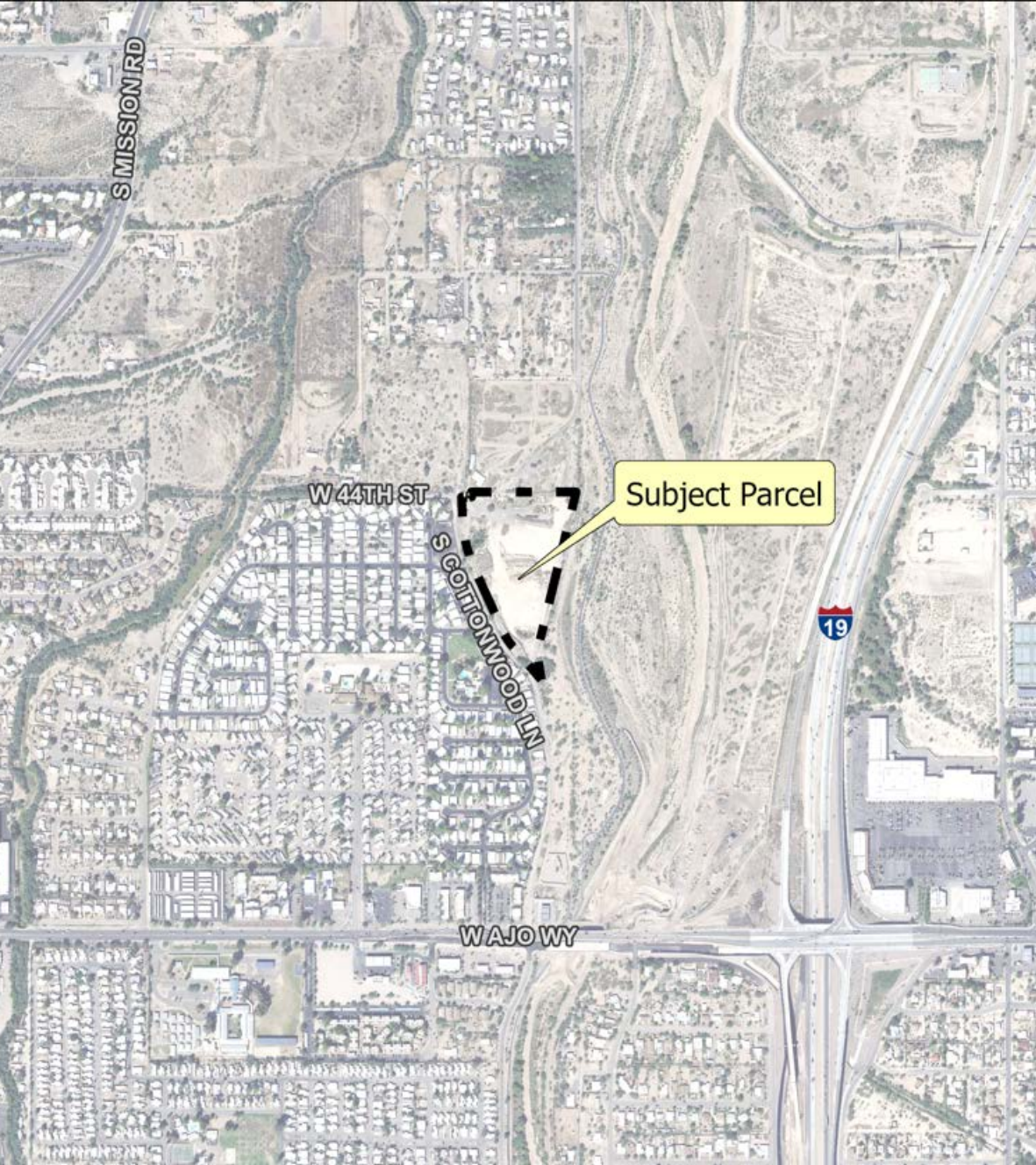
# Agenda: Cottonwood Substation

## Special Exception Land Use Permit (SELUP)

---

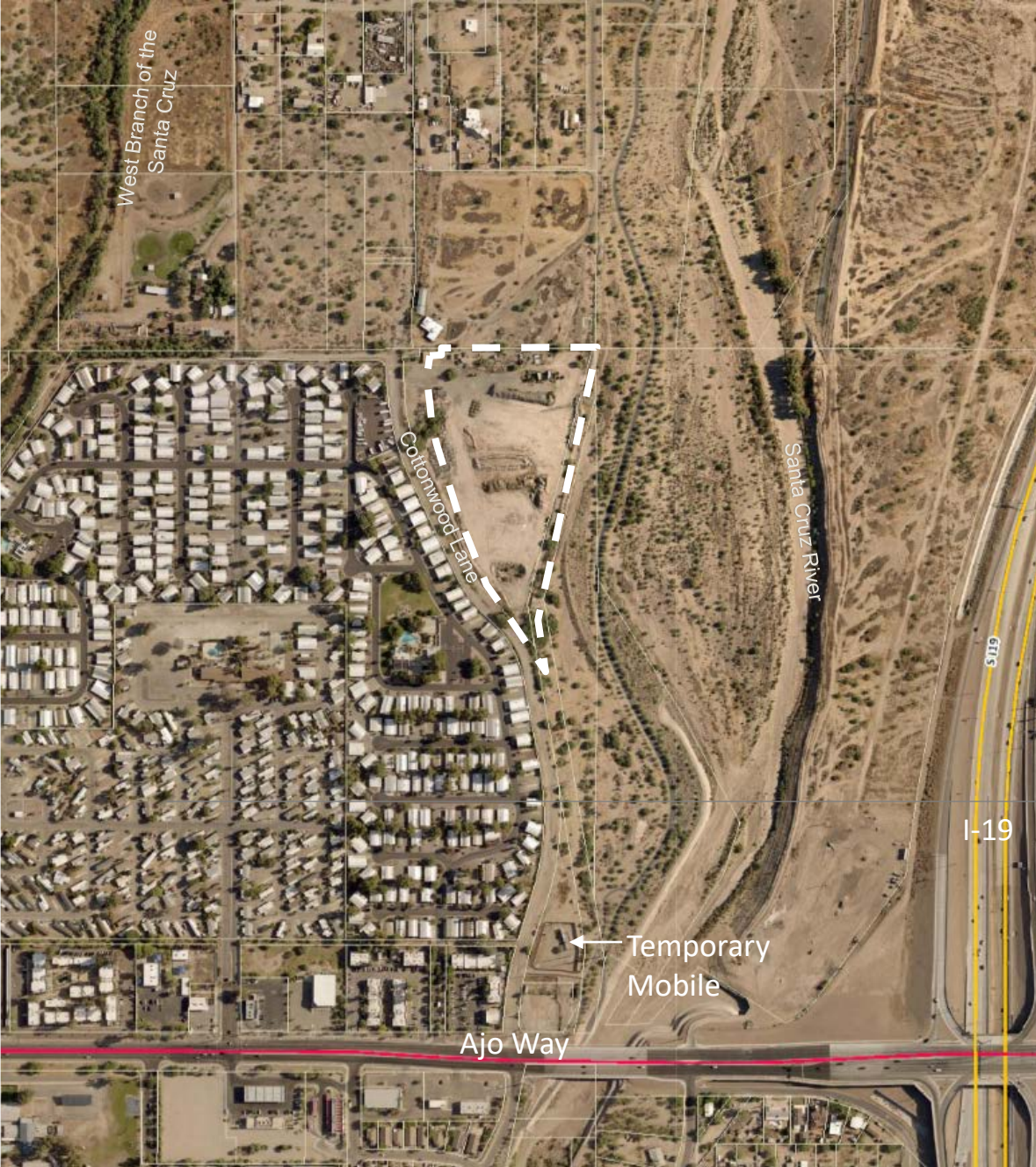
- Brief Background of Phase 1
- Cottonwood Substation Information
- SELUP Requirements and Process
- Q&A: About SELU and Cottonwood Substation
- For more information about the project, please visit:

<https://www.tep.com/cottonwood-substation/>



# Location Map





# Aerial Map



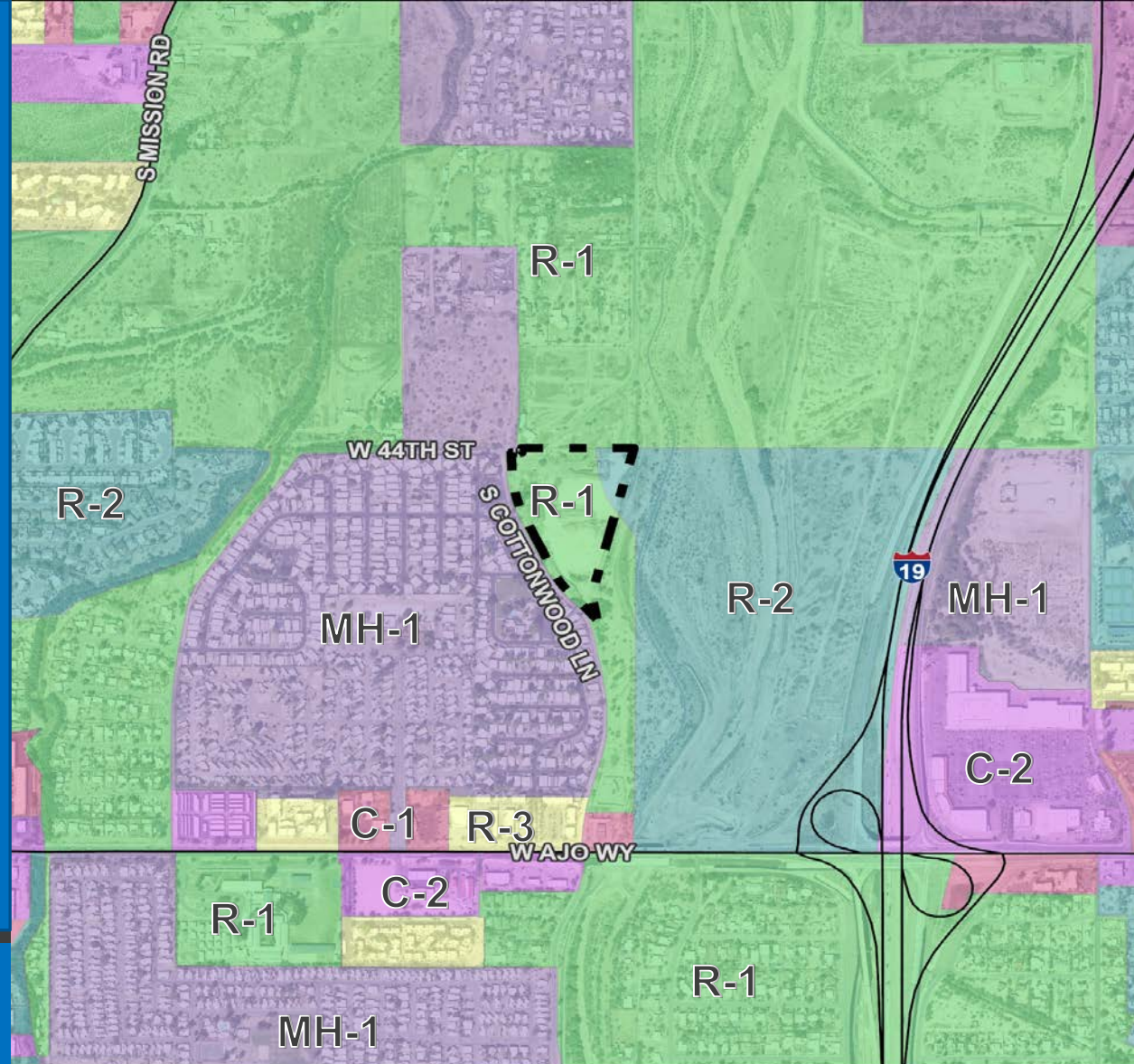


Prior to Development

# Phase I

- In Spring 2019, TEP installed a temporary 40 megavolt ampere (MVA) mobile substation, new power poles and other infrastructure.
- The mobile is on South Cottonwood Lane on land owned by the City of Tucson and operated by Pima County Regional Flood Control District.
- This facility will remain in place until the proposed substation is in operation.
- The facility equipment will be removed and the land will be restored with new landscape elements matching the character of the adjacent Paseo de las Iglesias parkway.

# Zoning Map



- Subject Parcel
- Study Area (1 Mile)
- Zone Codes**
- C-1

- C-2
- I-1
- MH-1
- O-3

- P
- P-I
- R-1
- R-2
- R-3

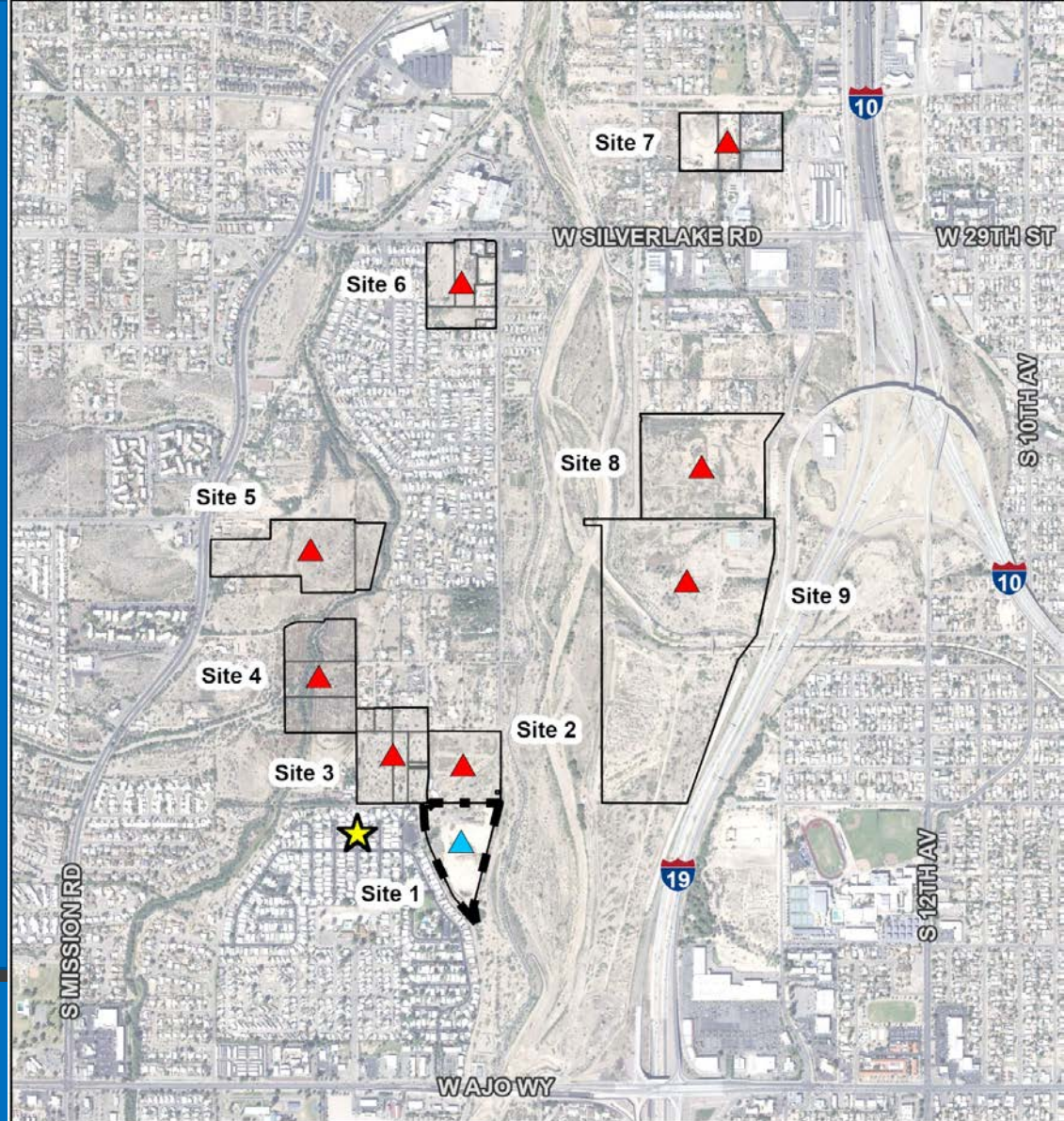
Sources: Esri, UNS, TEP,  
and Pima County GIS.  
Projection: NAD 1983 UTM Zone 12 N  
Basemap: PAG Imagery 2019






0 1,000  
Feet  
1 Inch = 1,000 Feet





# Parcel Selection



-  Preferred Site Location
-  Alternative Site Locations
-  Load Center
-  Site Areas
-  Subject Parcel

Sources: Esri, UNS, TEP,  
and Pima County GIS.  
Projection: NAD 1983 UTM Zone 12 N  
Basemap: PAG Imagery 2019

0 1,500  
Feet  
1 Inch = 1,500 Feet





# Cottonwood Substation

## Proposed Substation

- TEP has proposed building a new on a 10.4-acre site.
- The new substation will house two transformers and other equipment designed to change the voltage of electric facilities for distribution and delivery of electric service to area customers.
- The substation will be built on a site formally used for aggregate mining and inert material screening.

# Cottonwood Substation

## Purpose and Need

- The new 138-kV Cottonwood Substation will provide greater electric capacity to ensure continued reliability for current and future residential and commercial customers in the service area located west of Interstate 19, between West Anklam Road and West Irvington Road.
- TEP plans to build the substation approximately one-quarter mile north of South Cottonwood Lane and West Ajo Way. The substation will connect to an existing 138-kV transmission line located along the west bank of the Santa Cruz River.
- TEP long term transmission plan is to retire aging 46 kV substations and replace them with 138 kV substations.

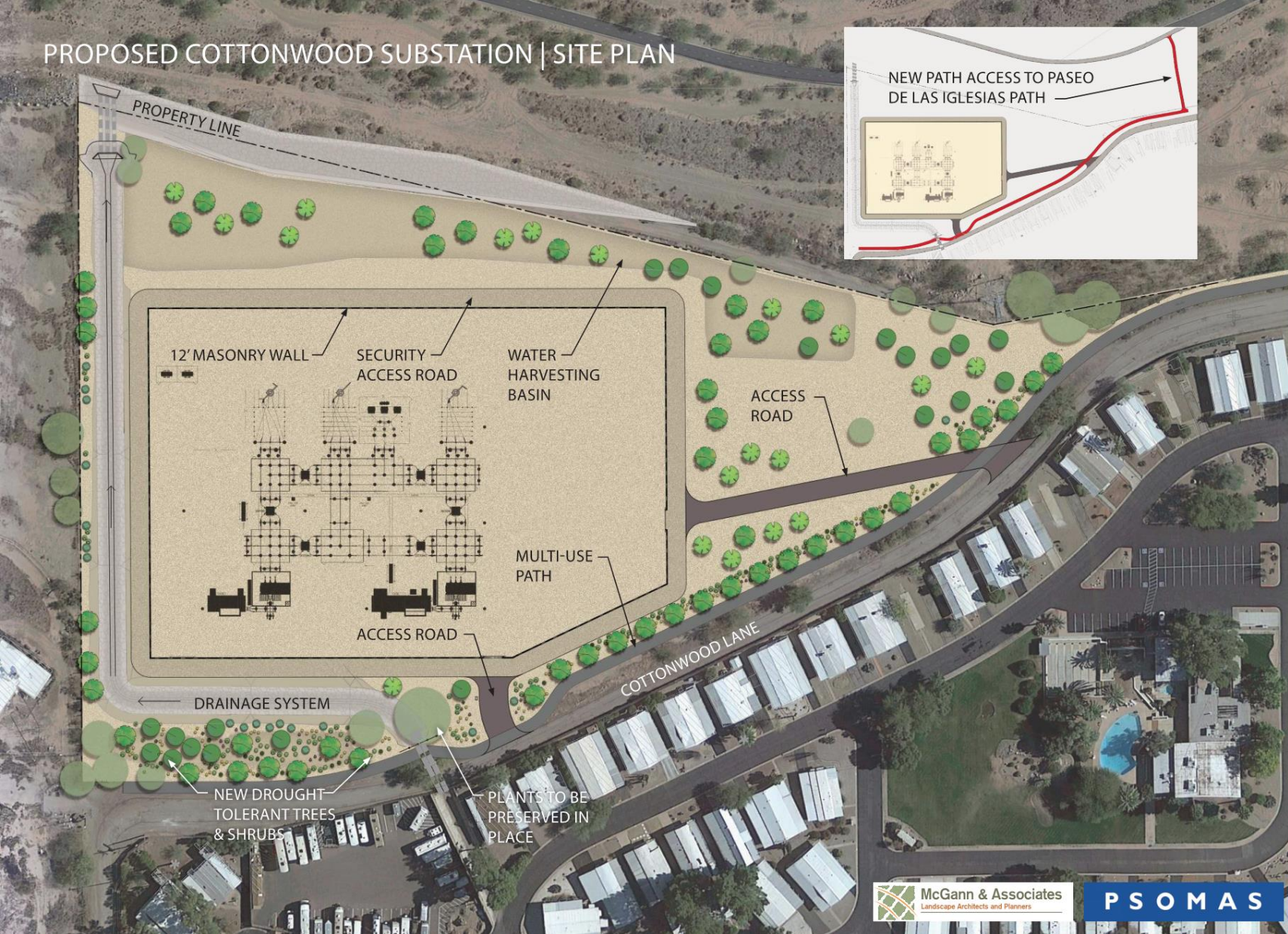


# Cottonwood Substation

## Project Benefits

- Increases system capacity to help meet current and future energy needs for area customers.
- Provides reliability support to help TEP restore service more quickly to nearby customers affected by power outages.
- Supports economic development around Ajo Way and I-19.
- Supports TEP's continual efforts to improve reliability by retiring aging 46 kV substations.
- Includes a multi-use path connection from the Paseo de las Iglesias to a future project on the West Branch of the Santa Cruz.

# PROPOSED COTTONWOOD SUBSTATION | SITE PLAN



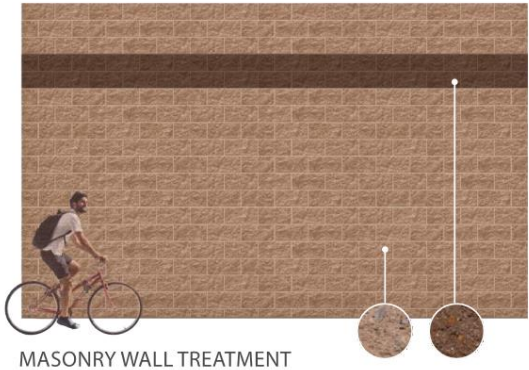
## Preliminary Development Plan (PDP)



PROPOSED COTTONWOOD SUBSTATION | PERSPECTIVES

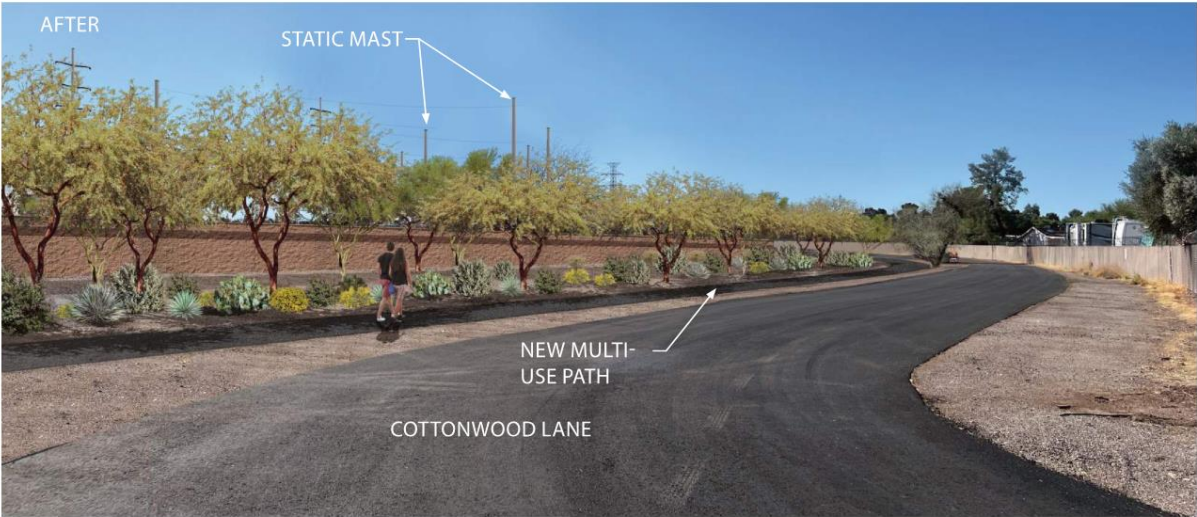


LOOKING NORTH ON COTTONWOOD





PROPOSED COTTONWOOD SUBSTATION | PERSPECTIVES



LOOKING SOUTHEAST ON COTTONWOOD

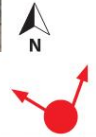




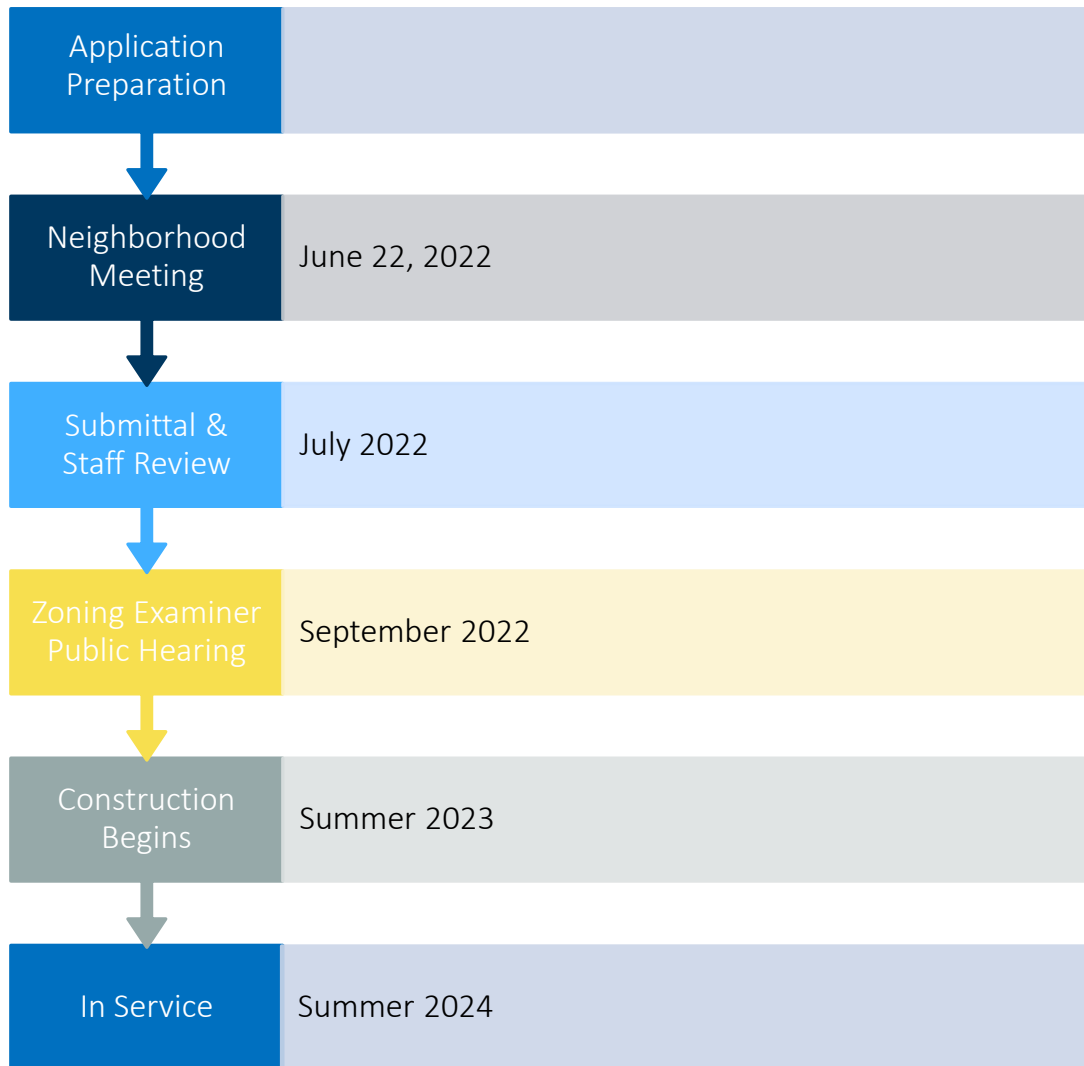
# PROPOSED COTTONWOOD SUBSTATION | PERSPECTIVES



LOOKING NORTHWEST ON PASEO DE LAS IGLESIA PATH



MASONRY WALL TREATMENT



# Special Exception Land Use Process

# Questions?

---

**Chris Ortiz y Pino** | TEP Environmental Land Use Planner  
christopher.ortizypino@tep.com | 520-633-8693

<https://www.tep.com/cottonwood-substation/>