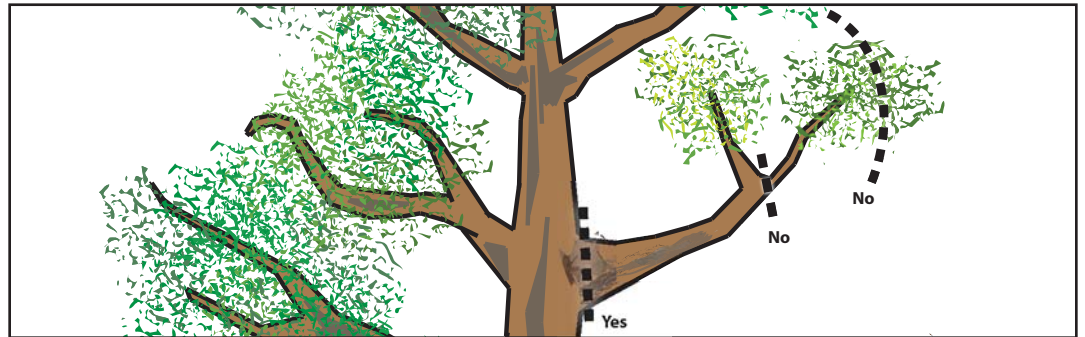


The Right Approach to Pruning Trees

TEP's certified arborists and qualified line clearance crews will use "directional pruning" procedures to clear the vegetation. These methods are recommended by the International Society of Arboriculture.

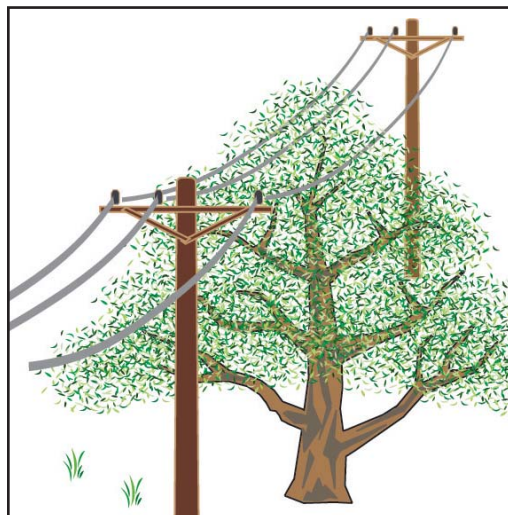
Approach to Pruning Branches

Crews may cut entire branches that are growing into or toward overhead equipment. Vegetation is trimmed in an effort to minimize interference from future growth.

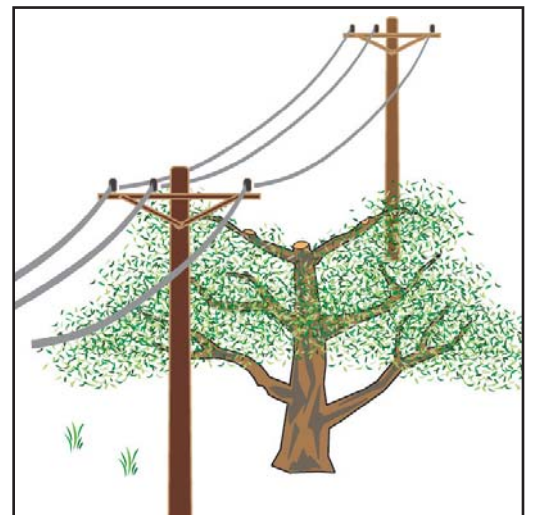


Trees Growing Below Power Lines

Branches of trees planted directly beneath power lines must be cut back. Our pruning methods will direct the tree's canopy to grow away from overhead equipment.



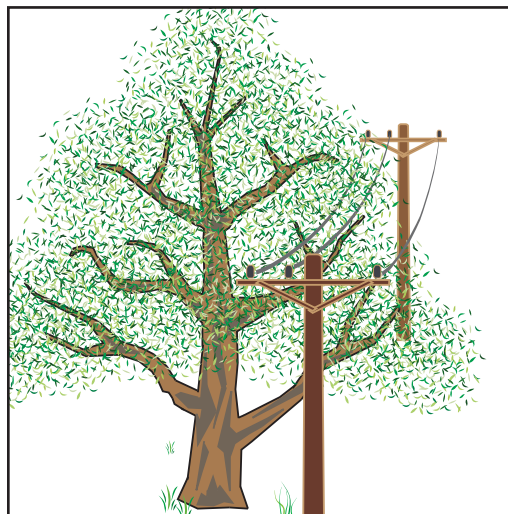
Before Pruning



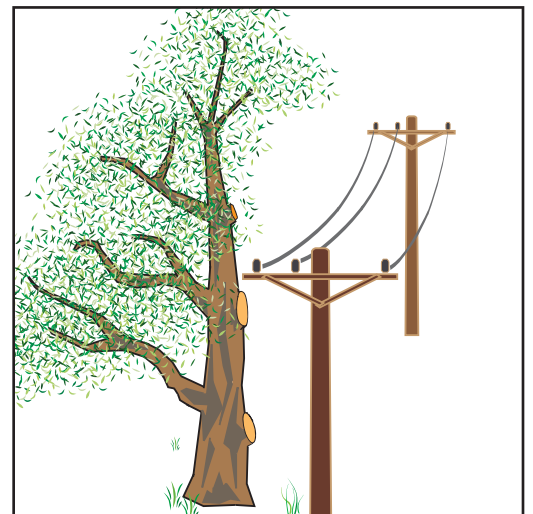
After Pruning

Trees Growing Next to Power Lines

Trees growing next to power lines may have to be pruned primarily on one side. This method of pruning, while healthier than other methods, may result in an asymmetrical appearance.



Before Pruning



After Pruning



A UniSource Energy Company