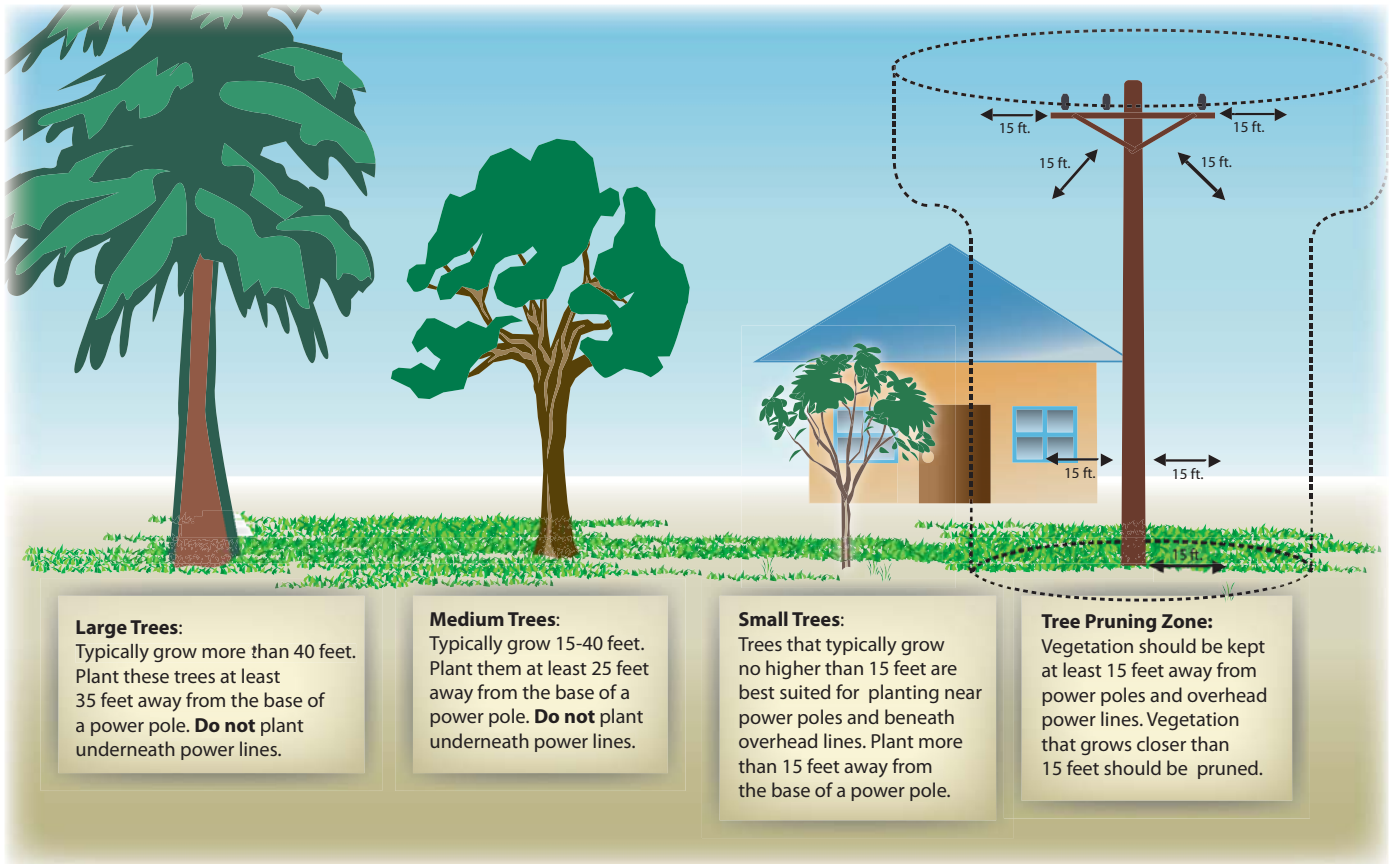


Plant the Right Tree in the Right Place

TEP encourages customers to plant the right kind of tree in the right location near their homes and businesses. Whether you're planting trees for beauty or to create shade that can help reduce your energy usage, please be cautious and remember to weigh the potential benefits against problems that may arise as a tree matures.



Know your tree

Do you know how tall your new tree might grow? Do you know how wide the canopy might be? Do you know what shape the canopy will take? It's important to know the answers to these questions when choosing what kind of tree to plant. While certain trees may have specific needs at the time of planting, it's important to envision what that tree will look like in ten years.

Trees that grow into the tree pruning zone of a power pole have the potential to cause damage and must be pruned.

Look around

Trees grow upward and outward. Are there power lines or other electrical equipment overhead? When the tree reaches maturity, might its canopy make contact with electrical lines? Are you planting near any underground equipment?

Trees should be planted so that no part of the tree grows within 15 feet of electrical equipment.

Call before you dig

Picking up a shovel before you pick up the phone can lead to unnecessary injuries, property damage and damaged underground electrical equipment that can cause power outages. Before you dig a site for a new tree, call 811 or Arizona Blue Stake at 1-800-STAKE-IT (1-800-782-5348) at least two working days before you dig so that underground facilities can be marked. TEP will locate company-owned service lines at no charge.

For more information, call (520) 623-7711 or visit tep.com.