



ROSEMONT 138-KV TRANSMISSION LINE PROJECT

Project Fact Sheet

November 2008

Introduction

Tucson Electric Power (TEP) is in the preliminary stages of planning for the construction and operation of new electrical transmission facilities to serve the proposed Rosemont Copper operations in the Santa Rita Mountains southeast of Tucson. The power delivery requirements would necessitate expansion of the existing electrical system in the area, including the installation of a new 138-kilovolt (kV) transmission line, construction of a new substation at the Rosemont facilities, and upgrades to an existing substation. The transmission line is anticipated to be in-service by mid 2010.

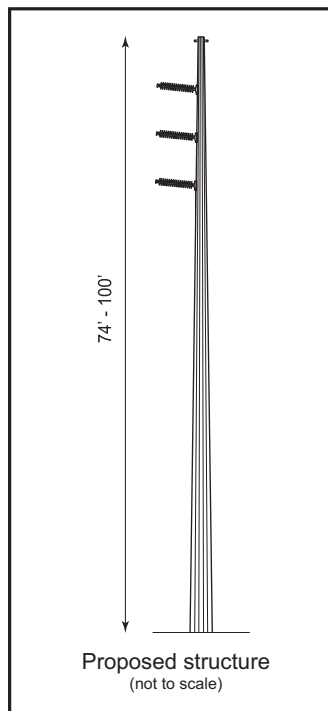
The proposed transmission line could cross areas served by both TEP and Trico Electric Power Cooperative, Inc. (Trico). Because most of the proposed Rosemont facilities would be located in TEP's service territory, TEP would plan, build, and operate the transmission line.

Purpose and Need

As a public utility regulated by the Arizona Corporation Commission (ACC), TEP is obligated to make service available to customers who request it and are able to pay the necessary costs. The proposed 138-kV transmission line and substation would be needed to provide adequate and reliable power for operation of the proposed Rosemont facilities. No existing transmission lines or substations could serve this purpose and need.

Project Description

TEP is proposing to build a 138-kV transmission line from either its Vail Substation (south of Interstate 10 [I-10] and west of South Rita Road) or South Substation (east of I-19 and south of East Pima Mine Road) to a proposed substation located on Rosemont Copper Company property approximately 11 miles east of Green Valley. There would be adequate electrical capacity from either TEP substation to serve the estimated 133-megawatt load that would be required for Rosemont Copper's operations.



The proposed transmission line could extend up to 28 miles, depending upon its final route. The line would follow an estimated 100-foot-wide "right-of-way" path acquired by easement lease or purchase, while the proposed substation would require less than 1 acre of land. In accordance with TEP's design standards, the transmission line structures would be built to accommodate a second circuit, though TEP does not have plans to install a second circuit as part of this project.

Project Area

While the proposed Rosemont facilities are generally located within and adjacent to the Coronado National Forest, the project area consists predominantly of Arizona State Land Department property and privately owned land under the jurisdiction of Pima County. The project area also includes land administered by the U.S. Bureau of Land Management as well as the Santa Rita Experimental Range, which is managed by the University of Arizona. A map of the project area is included in this fact sheet.



Undeveloped lands within the central portion of the project area

The project area includes roads, railroads, and other linear features. Existing 115-kV, 138-kV, 230-kV, and 345-kV transmission lines and lower voltage distribution lines follow major roadways, and several cross the Santa Rita Experimental Range. I-10 crosses the northern portion of the project area, while I-19/U.S. Highway 89 and the Union Pacific Railroad cross the western portion. State Route 83 extends north to south on the eastern edge of the project area, and the Pima and Santa Cruz county line is near the southern boundary.

The project area features a mixture of relatively flat grasslands and desertscrub lands. Several ephemeral washes/drainages extend into the area from the Santa Rita Mountains.



Development in the western portion of the project area

The communities of Sahuarita, Green Valley, and Vail are included in the study area, as are some rural residences and land used for agriculture or commercial and industrial purposes.

ACC Approval

Arizona Revised Statutes 40-360 require TEP to seek a Certificate of Environmental Compatibility (CEC) from the ACC prior to construction of a high-voltage transmission line. TEP's CEC application will include a project description and environmental analysis to be reviewed by the Arizona Power Plant and Transmission Line Siting Committee. The application is likely to recommend a preferred and alternate route(s). Approval from the ACC is needed to build the proposed transmission line

Planning Process and Project Schedule

TEP will complete environmental studies and solicit public comments on its plans before seeking approval of this proposed project. TEP will be conducting the planning process over the next several months and anticipates filing a CEC application in the second quarter of 2009. A diagram summarizing the planning process is included in this fact sheet.

Environmental Studies

TEP will consider numerous environmental factors, including existing and future land uses as well as visual, cultural/archaeological, and biological resources before making a recommendation on this project.

Evaluation of these environmental factors is an important component of the CEC application.

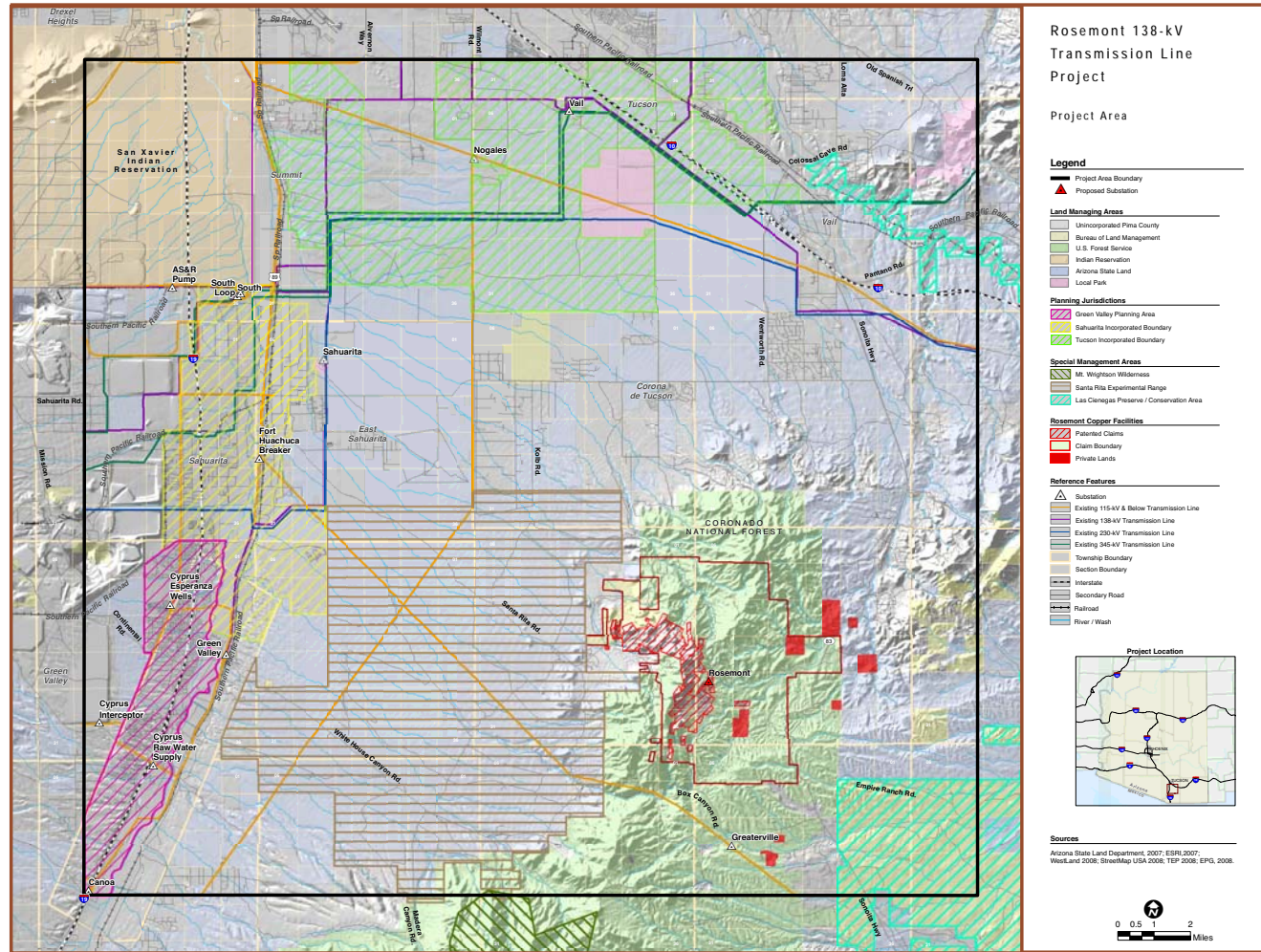
TEP will consult with federal, state, and local agencies regarding potential environmental issues in the project area. TEP will consider environmental issues identified by the agencies throughout the planning process, and their plans may incorporate potential mitigation measures to reduce or minimize environmental impacts.

Public Participation

TEP will distribute information about the project and solicit public input during meetings with community leaders, elected officials, and stakeholders, as well as through media briefings, public open house meetings, informational newsletters, and a telephone information line.

TEP will form a stakeholder group consisting of various community members, agency staff, and landowners. This group will incorporate a cross-section of individuals who are familiar with issues in the community and represent a broad range of interests. The group is an important part of the planning process and will provide valuable information and comments that will be considered for the proposed transmission line project.

Public open house meetings will be conducted within the project area and announced via project newsletters and local newspaper advertisements. The public will have opportunities to review key information, interact with project staff, and provide comments regarding the proposal.



PLANNING PROCESS	TASK 1 SITING CRITERIA, DEFINE STUDY AREA, AND SECONDARY DATA COLLECTION	TASK 2 OPPORTUNITIES/CONSTRAINTS ANALYSIS AND ALTERNATIVES IDENTIFICATION	TASK 3 DETAILED INVENTORY AND ALTERNATIVES ASSESSMENT	TASK 4 ALTERNATIVES SELECTION AND RESOURCE SURVEYS	TASK 5 PREPARATION AND FILING OF CEC APPLICATION	TASK 6 CEC HEARINGS
PUBLIC PARTICIPATION ACTIVITIES	<ul style="list-style-type: none"> Community leader and elected official briefings Identify and contact stakeholders Project fact sheet Stakeholder group meeting #1 	<ul style="list-style-type: none"> Stakeholder group meeting #2 and #3 Newsletter #1 and #2 Public open house meeting #1 and #2 	<ul style="list-style-type: none"> Stakeholder group meeting #4 	<ul style="list-style-type: none"> Stakeholder group meeting #5 Newsletter #3 Public open house meeting #3 	<ul style="list-style-type: none"> Ongoing activities 	<ul style="list-style-type: none"> Public hearings before the Arizona Power Plant and Transmission Line Siting Committee and ACC
ESTIMATED TIMELINE	September - November 2008	November 2008 - February 2009	January - March 2009	March - April 2009	April 2009	April - May 2009



ROSEMONT 138-KV TRANSMISSION LINE PROJECT

Who is TEP?

TEP provides safe, reliable power to nearly 400,000 customers in the Tucson metropolitan area and surrounding communities. Its parent company, UniSource Energy Corporation, oversees a family of energy companies serving more than 1.5 million Arizona residents. TEP values community input, and the company looks forward to working with the agencies, residents, and businesses throughout the study area during the planning process for this important project.

Who is EPG?

EPG is a local, multi-disciplinary, environmental consulting firm retained to conduct the environmental studies and assist with the public participation activities for the Rosemont 138-kV Transmission Line Project planning process. EPG has over 30 years of experience in siting and permitting transmission lines within Arizona. An important component of their approach is to integrate community input with the planning process and identify environmentally compatible transmission line route(s).

Contact Information

A toll-free project information line, (866) 632-5944, has been set up for the public to provide comments or request additional information on the Rosemont 138-kV Transmission Line Project. For additional information, visit TEP's Web site at www.tep.com.