



DRAFT

Rosemont 138kV Transmission Line Project

Alternative 1

Legend

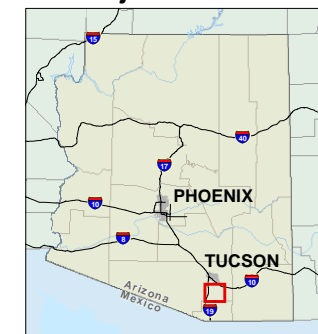
- Operation Power (20, 25, 60, 100, 130, 135, 95, 140)
- Construction Power Option (170, 160, 190, 210)

- Link Identification Number
- Link Node
- Preliminary Alternative Link

General Reference Features

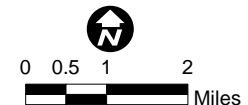
- Existing Substation
- Proposed Switchyard/Substation
- Existing 345kV Transmission Line
- Existing 230kV Transmission Line
- Existing 138kV Transmission Line
- Existing 115kV Transmission Line
- Existing 46kV Transmission Line
- National Forest Boundary
- Updated Project Study Area Boundary
- County Boundary
- Interstate
- Highway
- Secondary Road
- Railroad
- River / Wash
- Township Boundary

Project Location



Sources

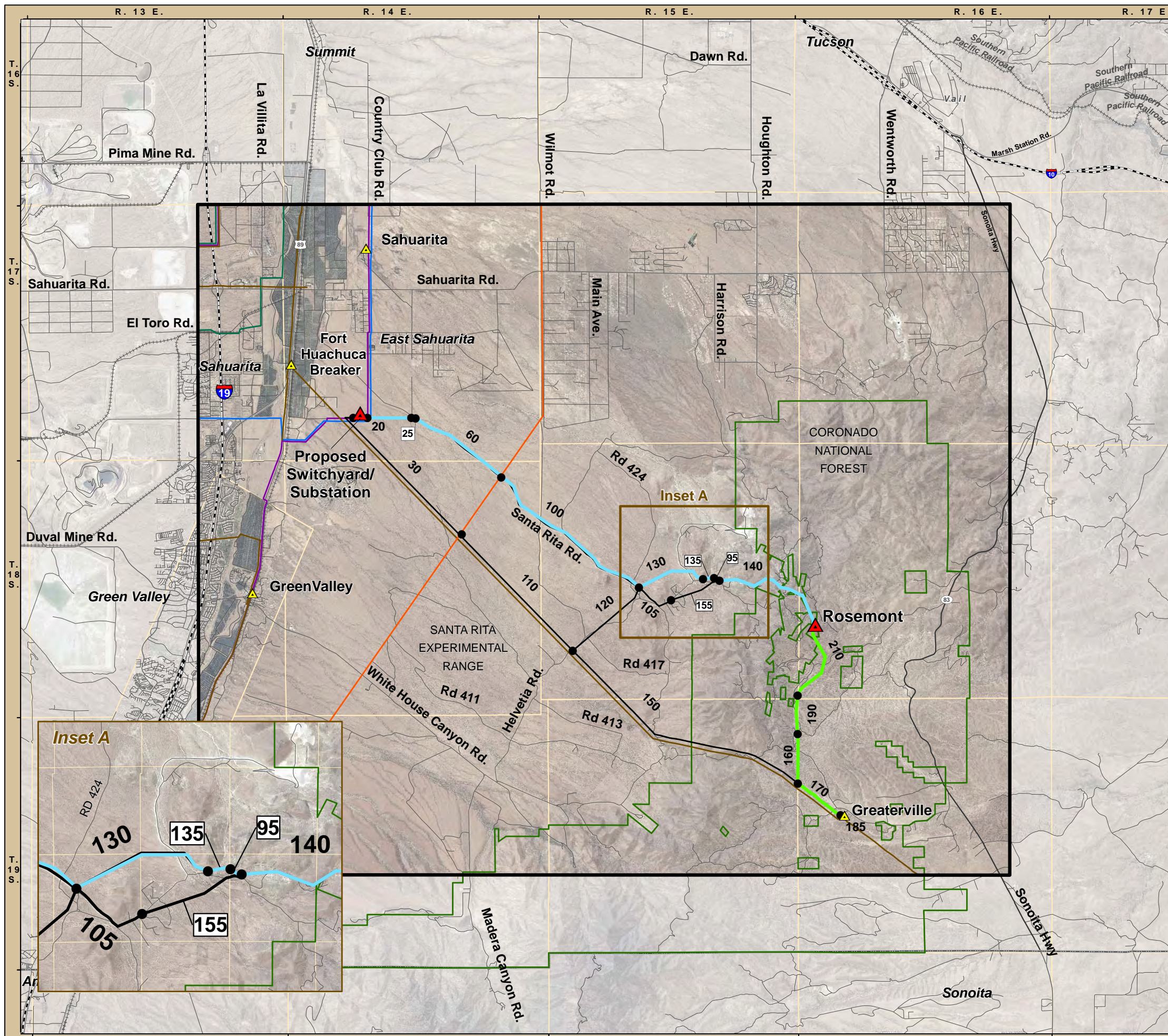
StreetMap USA 2008; TEP 2008; EPG, 2008, Pima County 2008, Rosemont Copper Company 2008



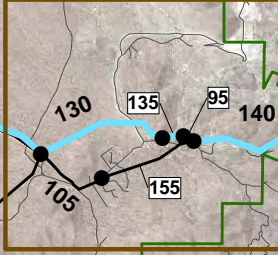
November 16, 2010



N:\projects\Rosemont Copper\TEP_Lopez\mxd\RM_C_Base_Hillshade_Insets_display.mxd



Inset A



Inset A

