



DRAFT

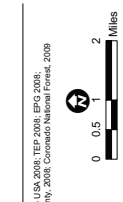
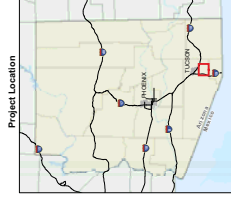
Rosemont 138kV Transmission Line Project Preliminary Transmission Line Link Alternatives with Parks, Open Space, Recreation

- Legend**
- TE Link Identification Number
 - Link Node
 - Preliminary/Alternative Link
 - Existing Trailhead
 - Proposed Trailhead
 - Campground
 - Arizona Trail
 - Arizona National Historic Trail
 - Proposed Pima County Trail
 - Pima County Proposed Park
 - Las Orogas National Conservation Area
 - Pima County Park
 - Coronado National Forest
 - Inventoried Roadless Area

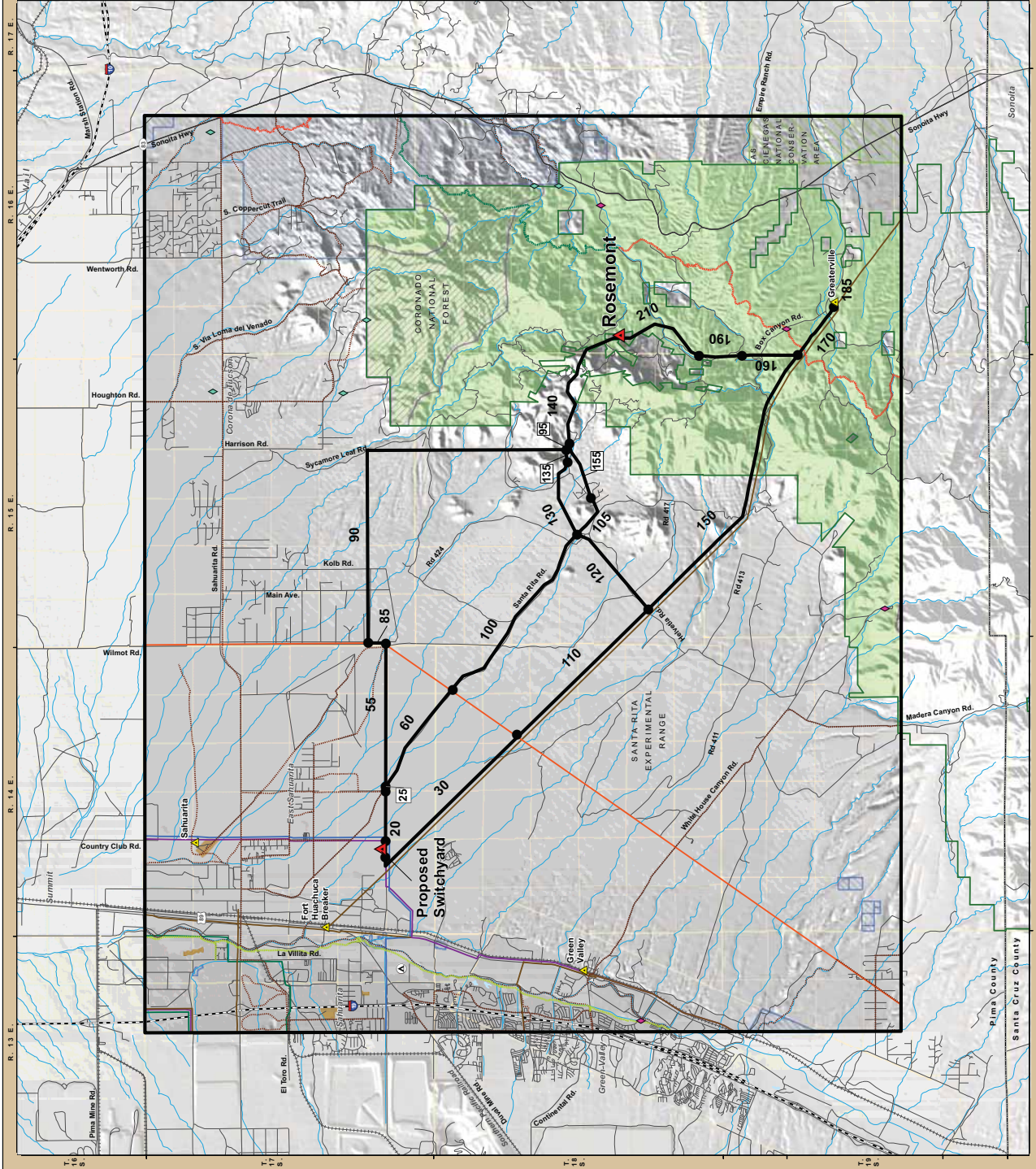
- General Reference Features**
- Existing Substation
 - Proposed Switchyard/Substation
 - Existing 345kV Transmission Line
 - Existing 230kV Transmission Line
 - Existing 138kV Transmission Line
 - Existing 118kV Transmission Line
 - Existing 48kV Transmission Line
 - National Forest Boundary
 - Updated Project Study Area Boundary
 - County Boundary
 - Interstate
 - Highway
 - Secondary Road
 - Road
 - River / Wash
 - Township Boundary
 - Section Boundary

Notes: Not all of the preliminary alternative links shown on the map will be constructed.
 Project study area boundary has been updated as of July 2009.
 All links are preliminary and may be modified based on agency and public input.

Sources:
 Streamline USA 2000; TEP 2008; EPD 2008;
 Pima County 2008; Coronado National Forest, 2009



Working Draft
 April 7, 2010



R. 13 E. R. 14 E. R. 15 E. R. 16 E. R. 17 E.

T. 16 S. T. 15 S. T. 14 S. T. 13 S.

Pima County
 Santa Cruz County