



DRAFT

Rosemont 138kV Transmission Line Project Aerial Imagery

Legend

Note: Project study area boundary has been updated as of July 2009

General Reference Features

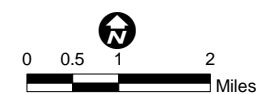
- | | | | |
|--|-------------------------------------|--|-------------------|
| | Existing Substation | | County Boundary |
| | Proposed Switchyard/Substation | | Interstate |
| | Existing 345kV Transmission Line | | Highway |
| | Existing 230kV Transmission Line | | Secondary Road |
| | Existing 138kV Transmission Line | | Railroad |
| | Existing 115kV Transmission Line | | River / Wash |
| | Existing 46kV Transmission Line | | Township Boundary |
| | National Forest Boundary | | Section Boundary |
| | Updated Project Study Area Boundary | | |

Project Location

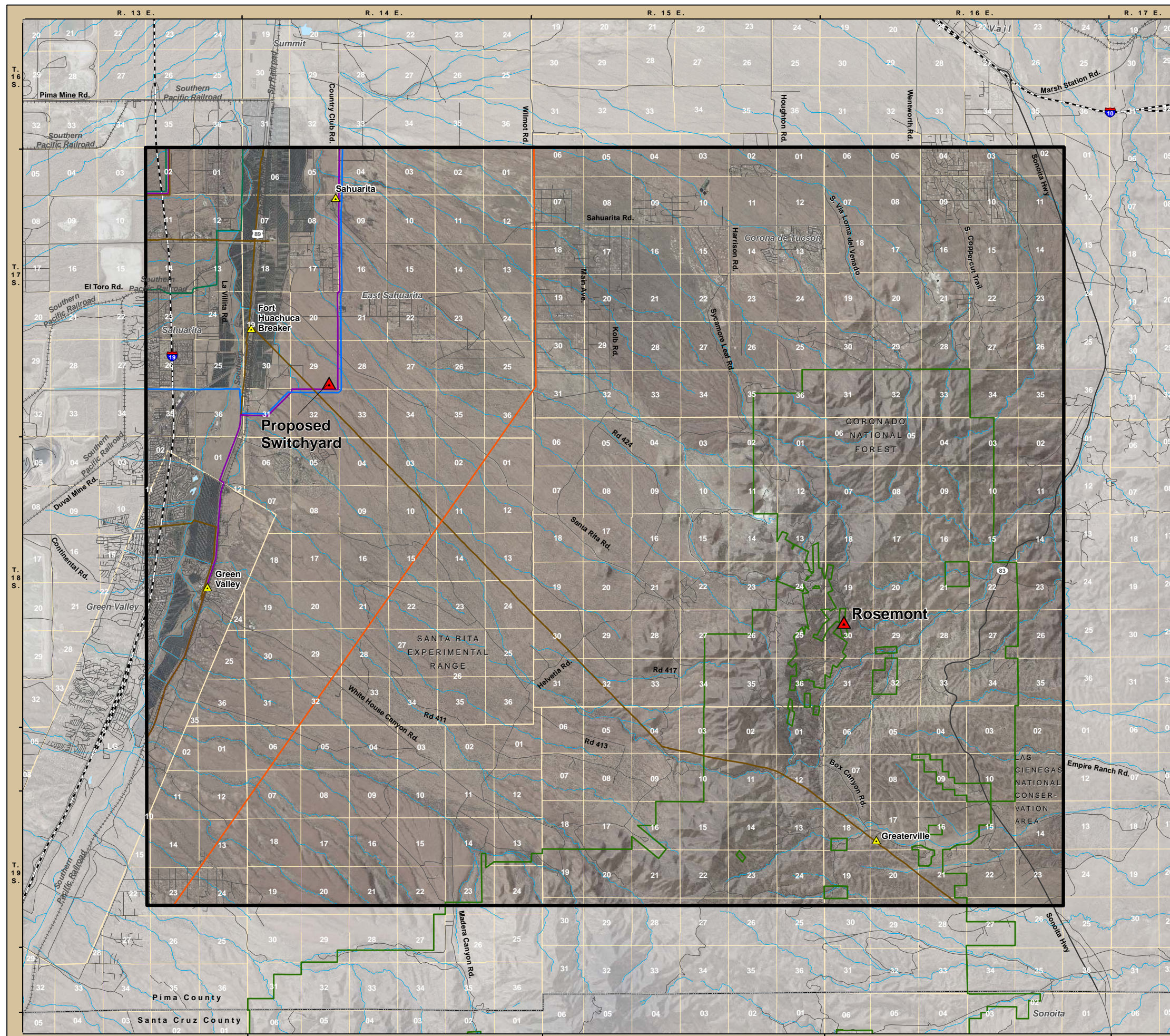


Sources

StreetMap USA 2008; TEP 2008; EPG, 2008;
USA Prime Imagery, 2008



Working Draft
August 24, 2009



- E
- P
- E
- E
- E
- E
- E
- N
- U

N:\projects\Rosemont\Rosemont\TEP_Lopez\mxd\RM_C_Base_Hillshade.mxd