

## **Exhibit J-2.     Project Newsletters**

THIS PAGE INTENTIONALLY LEFT BLANK

EPG  
4141 NORTH 32<sup>ND</sup> STREET, SUITE 102  
PHOENIX, AZ 85029

FIRST-CLASS MAIL  
PRESORTED  
U.S. POSTAGE PAID  
WORLD MARKETING

### IMPORTANT PUBLIC OPEN HOUSE NOTICE

PARA INFORMACIÓN EN ESPAÑOL, LLAME AL (866) 632-5944



## Rosemont 138-kV Transmission Line Project

Please attend one of the upcoming

### PUBLIC INFORMATION OPEN HOUSES

**March 24, 2009  
5:30-7:30PM**

Acacia Middle School  
12955 East Colossal Cave Road  
Vail, Arizona 85641

**March 25, 2009  
5:30-7:30PM**

Canoa Hills Social Center  
Palo Verde Room  
3660 South Camino del Sol  
Green Valley, Arizona 85622



## Rosemont 138-kV Transmission Line Project

Project Newsletter #1

March 2009

### Introduction

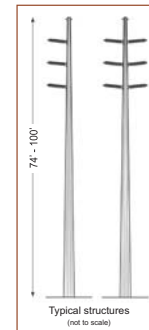
Tucson Electric Power (TEP) is in the preliminary stages of planning for the construction and operation of new electrical transmission facilities to serve the proposed Rosemont Copper Company (Rosemont) operations in the Santa Rita Mountains southeast of Tucson. The power delivery requirements will necessitate expansion of the existing electrical system in the area, including construction of a new 138-kilovolt (kV) transmission line, a new substation at the Rosemont facilities, and upgrades to an existing substation. The transmission line is expected to be in service by early 2011.

### Purpose and Need

As a public utility regulated by the Arizona Corporation Commission (ACC), TEP is obligated to make service available to customers who request it and are able to pay the necessary costs. The proposed 138-kV transmission line and substation are needed to provide adequate and reliable power for operation of the proposed Rosemont facilities. No existing transmission lines or substations are capable of providing service for this purpose and need.

### Project Description

The proposed Rosemont 138-kV Transmission Line could extend up to 30 miles from TEP's existing transmission system to a proposed substation located on Rosemont property approximately 11 miles east of Green Valley. Various locations are being considered for the line's starting point including, but



not limited to, TEP's South and Vail substations. Either of these substations would have adequate electrical capacity to serve the estimated 133-megawatt load that would be required for Rosemont Copper's operations. The line would follow an estimated 100-foot-wide right-of-way path acquired by lease or easement purchase. The proposed Rosemont Substation would be built on approximately 1 acre of Rosemont property. Although this is planned as a single circuit transmission line, in accordance with TEP's design standards, the transmission line structures would be built to accommodate a second circuit, if necessary.

### Project Area

The project area incorporates all areas where the facilities could possibly be built. The area generally consists of state and federal land, including Coronado National Forest and Bureau of Land Management administered land, as well as privately-owned land in Pima County. A portion of the state land in the project area is the Santa Rita Experimental Range, managed by the University of Arizona. A map of this area is included in this newsletter.



Undeveloped lands within the central portion of the project area

The project area includes roads, railroads, power lines, and other existing linear features. Existing 115-kV, 138-kV, 230-kV, and 345-kV transmission lines and lower-voltage distribution lines generally follow roadways; two of these lines cross the Santa Rita Experimental Range within the project area. U.S. Interstate (I-)10 crosses the northern portion of the project area, while I-19/U.S. Highway 89 and the Union Pacific Railroad cross the western portion. State Route 83 extends north to south in the eastern portion of the project area, and the Pima/Santa Cruz County line is near the southern boundary.

The project area features a mixture of relatively flat lands that generally consists of creosote bush scrub and semidesert grassland. Several ephemeral washes/drainages extend into the area from the Santa Rita Mountains.

The communities of Sahuarita, Green Valley, and Vail and portions of Tucson are included in the study area, as are some rural residences and land used for agriculture or commercial and industrial purposes.

Arizona Corporation  
Commission Approval

Arizona Revised Statutes 40-360 to 40-360.13 require TEP to obtain a Certificate of Environmental Compatibility (CEC) from the ACC prior to construction of a high-voltage transmission line. TEP's CEC application will include a project description and environmental analysis to be reviewed by the Arizona Power Plant and Transmission Line Siting Committee. The application is likely to recommend a preferred and alternate route(s). After a decision by the Line Siting Committee, the ACC will review that decision and approve, deny, or modify it.

Planning Process and  
Project Schedule

TEP will complete environmental studies and solicit public comments on its plans before seeking approval of this proposed project. TEP will be conducting the planning process over the next several months and anticipates filing a CEC application in the second half of 2009. A diagram summarizing the planning process is included in this newsletter.

TEP has begun to collect data for a regional environmental inventory representing the resource areas. The project team has begun analyzing data and identifying opportunities and constraints for potential transmission line links that can be used to develop routes within the project area. This information will be displayed at the first set of public open houses.

Please attend one of the upcoming  
**PUBLIC INFORMATION  
OPEN HOUSES**

**March 24, 2009 5:30-7:30PM**  
Acacia Middle School  
12955 East Colossal Cave Road  
Vail, Arizona 85641

**March 25, 2009 5:30-7:30PM**  
Canoa Hills Social Center  
Palo Verde Room  
3660 South Camino del Sol  
Green Valley, Arizona 85622

Environmental Studies

Through its environmental consultant, Environmental Planning Group (EPG), TEP will consider many environmental factors, including existing and future land uses as well as visual, cultural, archaeological, and biological resources based on environmental analyses and studies. Environmental analyses as well as other factors will be considered before selecting proposed routes for this project. Evaluating these environmental factors is an important component of the CEC application.

TEP will consult with federal, state, and local jurisdictions, as well as other interested parties, regarding potential environmental constraints in the project area. TEP will review and evaluate the environmental constraints identified throughout the planning process and incorporate appropriate mitigation measures to avoid or minimize environmental impacts.

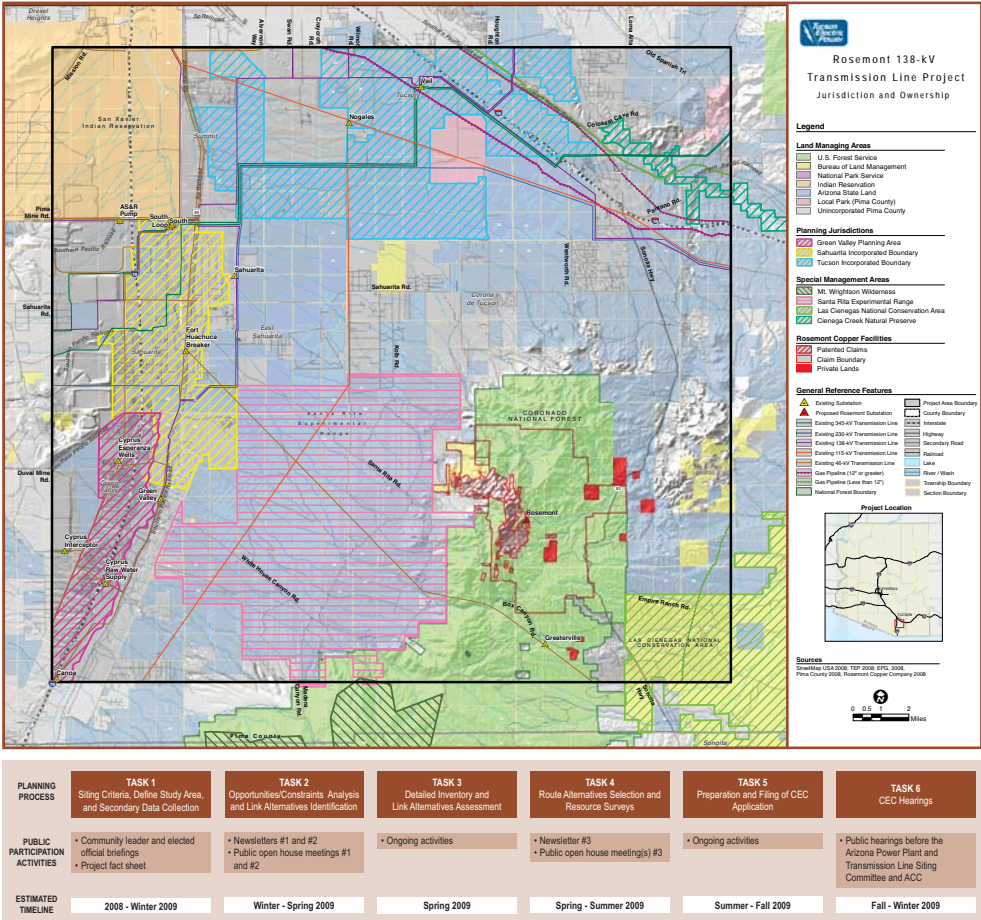
Public Participation

Public and agency input is another important component of the TEP decision process for selecting a proposed route(s). TEP will distribute information regarding the Rosemont project and request public input during individual meetings with community leaders, elected officials, and stakeholders, as well as through public open house meetings, informational newsletters, a telephone information line, and media briefings.

Numerous public open house meetings will be conducted within the project area and announced via project newsletters and the project Web site. The public will have opportunities to review key information, interact with project staff, and provide comments regarding the proposed transmission line project. See the box to the left for upcoming public open house information.

Contact Information

To offer comments or request additional information concerning the Rosemont 138-kV Transmission Line Project, please call the toll-free project telephone information line at (866) 632-5944 or visit TEP's Web site at [www.tep.com](http://www.tep.com).





# Rosemont 138-kV Transmission Line Project

Comment Form #1

March 2009

We would like to hear your comments on the Rosemont 138-kV Transmission Line Project. Please take a few minutes to answer the following questions and then return this form to us by April 15, 2009 to ensure your comments are incorporated during this phase of the planning process. Public comments will be incorporated throughout the planning process. Comments will be accepted by mail, fax **(602) 956-4374**, or electronically via the project Web site **[www.tep.com](http://www.tep.com)**.

**1. Please provide your name and address if you'd like to be added to our mailing list:**

Name \_\_\_\_\_

Address \_\_\_\_\_

City, State \_\_\_\_\_

Zip Code \_\_\_\_\_

Phone Number \_\_\_\_\_

**2. Please check the appropriate box below regarding your status on our mailing list.**

- ☐ I'm already on the list
- ☐ Please add me to the list
- ☐ Please remove me from the list

**3. How did you learn about the project?**

- ☐ Project website
- ☐ Newsletter mailing
- ☐ Media
- ☐ Word of mouth
- ☐ Other

**4. Are you a resident in the project study area?**

- ☐ Yes
- ☐ No

**5. If not, please indicate your affiliation.**

- ☐ Agency
- ☐ City or Town
- ☐ Developer
- ☐ Landowner
- ☐ Other

---

**6. Do you have comments on the purpose and need for the proposed project?**

---

---

---

**7. Do you have comments on the project study area boundary?**

---

---

---

**8. Do you have any additional comments about the project?**

---

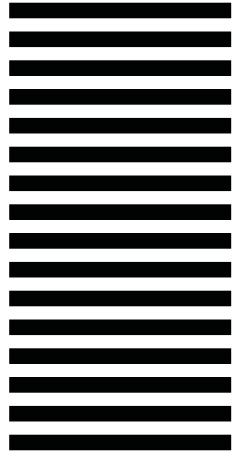
---

---

\* Feel free to attach additional pages, if necessary. You also may send additional comments or questions to the address listed on this form.



NO POSTAGE  
NECESSARY  
IF MAILED  
IN THE  
UNITED STATES



**BUSINESS REPLY MAIL**  
FIRST-CLASS MAIL PERMIT NO. 400 PHOENIX, AZ

POSTAGE WILL BE PAID BY ADDRESSEE

**EPG INC  
4141 N 32ND ST STE 102  
PHOENIX AZ 85018-9960**



EPG  
4141 NORTH 32<sup>ND</sup> STREET, SUITE 102  
PHOENIX, AZ 85018

PRSR STD  
U.S. POSTAGE  
PAID  
WORLD MARKETING

### IMPORTANT PUBLIC INFORMATION OPEN HOUSE NOTICE

PARA INFORMACIÓN EN ESPAÑOL, LLAME AL (866) 632-5944



## Rosemont 138kV Transmission Line Project

Please attend the upcoming  
**PUBLIC INFORMATION OPEN HOUSE**

**August 27, 2009  
5:30-7:30PM**

**Rancho Resort Clubhouse  
15900 South Rancho Resort Boulevard  
Sahuarita, Arizona 85629**



## Rosemont 138kV Transmission Line Project

Project Newsletter #2

August 2009

### Introduction

This newsletter is the second in a series concerning Tucson Electric Power's (TEP's) plan to build a new 138 kilovolt (kV) transmission line in Pima County. The new transmission line has been requested by Rosemont Copper Company (Rosemont) to serve its proposed mining operations southeast of Tucson. The proposed transmission line is expected to be in service in time to meet the needs of the proposed Rosemont operations.

### Project Summary

After conducting detailed electrical system engineering studies, TEP has concluded that the line should connect to TEP's existing transmission system at a proposed switchyard located about 3.5 miles east of Interstate 19 and 3 miles south of Sahuarita Road (see the enclosed map). The project study area has been updated to more closely correspond with the vicinity of potential transmission line link alternatives originating at that location.

To satisfy Rosemont's initial need for power to construct its facilities, TEP plans to build a 138kV line to the proposed Rosemont Substation from its Greaterville Substation, which is tied to an existing 46kV line. Since that link could not provide enough power for Rosemont's long-term operations, those needs would be met by a 138kV transmission line that originates at the proposed switchyard and extends to the proposed Rosemont Substation either through the connection at the Greaterville Substation or via another route.

No existing TEP transmission lines are capable of providing the requested service in the vicinity of Rosemont's proposed operations.

### Preliminary Routing Options

TEP has identified a number of preliminary transmission line segments, or links, that could be combined to form complete routes for the proposed transmission line. These alternative links are shown on the map included with this newsletter. *Please note that all links are preliminary and may be modified based on agency and public input.*

In identifying these alternative links, TEP and its consultant, EPG, reviewed public input and environmental data collected for the project area. Areas or resources identified as more sensitive (less desirable) for the project include but are not limited to:

- Existing and approved future residential areas, schools, and parks
- Scenic landscapes or corridors, including trails and designated scenic routes
- Sensitive cultural/archaeological sites, plants, and wildlife

Areas identified as opportunities (more desirable) for a transmission line route include:

- Industrial parks or commercial retail areas
- Existing and future transmission lines and pipelines (water)
- Existing or future highways, roads, and railroads
- Major property boundaries such as section lines

TEP will continue to complete environmental and engineering studies on each of the preliminary transmission line links. TEP also will consider comments received from the public before identifying preferred and alternative routes.

TEP requires approval from the Arizona Corporation Commission (ACC) to build and operate the two components (i.e., power for construction and operation) of its proposed transmission line. TEP will request that the ACC approve a 500-foot-wide corridor for the project that will allow TEP flexibility during design and negotiation with landowners. TEP will acquire rights to build the line along a 100-foot right-of-way within the boundaries of that corridor.

### Public Comments Received

TEP has been meeting with various agencies, regional stakeholders and the general public to discuss the proposed transmission line, collect environmental data, and identify preliminary issues and concerns within the project study area. Information about the project also has been made available on TEP's Web site and in a newsletter mailed to area residents. The following answers address common questions raised in response to those outreach efforts.

#### Where will TEP build the proposed transmission line?

Please see the attached map to review the potential transmission line segments, or links, that could be incorporated in the final route approved by the ACC. TEP is currently undertaking a planning and public involvement process to identify potential routes.



Upon completion of this process, TEP expects to propose one or more potential routes for the ACC's review.

**Is Rosemont paying for the transmission line siting study?**

Yes. Like any customer requesting service at the transmission voltage level, Rosemont is paying for the transmission siting study. The transmission line is being designed to serve Rosemont's needs, and it will not be built if Rosemont does not proceed with its proposed plan of operations.

**Will the existing utility rates increase because of this proposed project?**

Because Rosemont would pay the costs associated with building this transmission line, the project would not contribute to an increase in TEP's base rates.

**What effect will the proposed transmission line have on property values or taxes?**

TEP cannot determine with any certainty whether construction of this proposed line will have any lasting effect on the value of nearby property. TEP has reviewed studies that have linked other transmission line projects to a temporary reduction in nearby property values. However, those studies also indicated that the effect diminished with time, and other studies have found no effect at all.

**Is it possible to build the proposed transmission line underground?**

It would not be practical to build this proposed transmission line underground. In addition to a significantly higher cost, an underground line would disturb more land and could create greater potential environmental impacts than an overhead line. It is more typical to locate lower-voltage distribution lines underground in populated areas.

**Has Rosemont received final approval for its proposed mining operations?**

No. The U.S. Forest Service is currently reviewing Rosemont's proposal and is

expected to issue a Draft Environmental Impact Statement on that project in the fourth quarter of 2009.

**What is the source of the power that will serve the Rosemont operations?**

Rosemont operations would be served from TEP's resource portfolio, which includes a mix of company-owned generation and power supply contracts. Rosemont needs will be met with a mix of energy from existing resources, new natural gas-fired plants, or renewable resources.

**Is it possible to upgrade the existing Greaterville Substation and extend the new transmission line north to the proposed Rosemont Substation?**

TEP is considering potential links that would involve the Greaterville Substation.

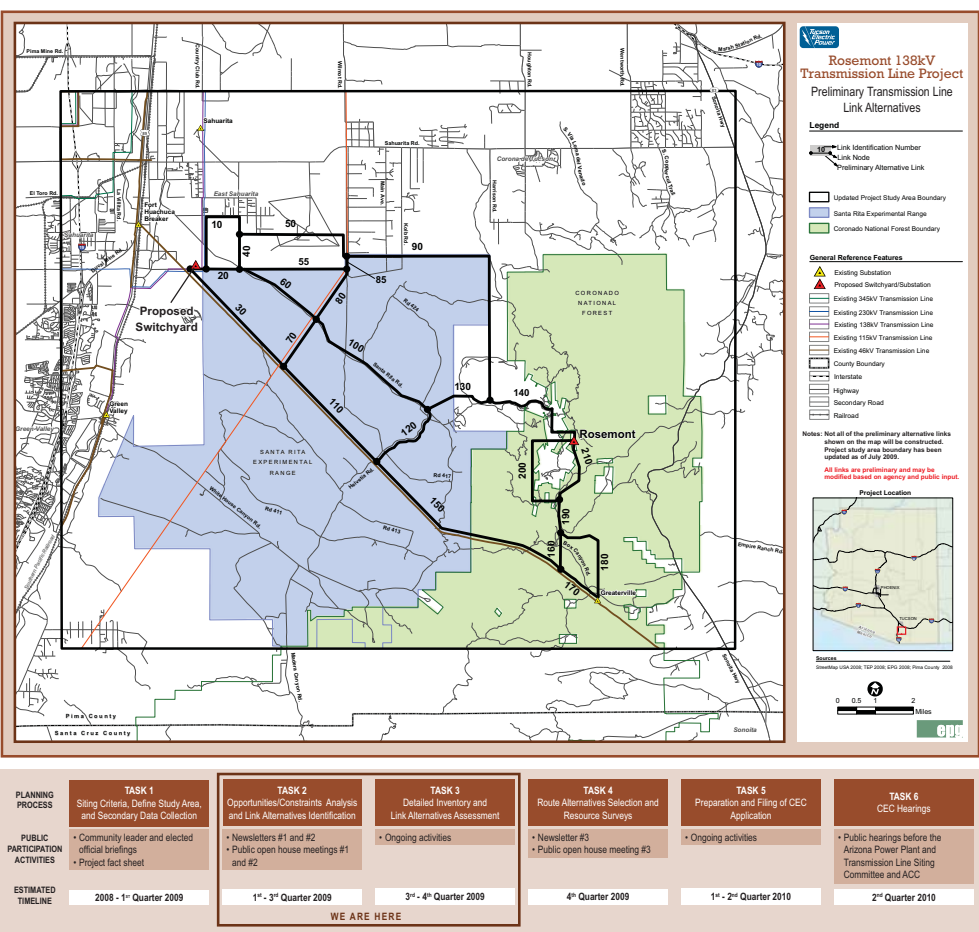
**Public Participation**

TEP is seeking public input on the preliminary transmission line links and other aspects of this project. Please take a few moments to share your thoughts using the enclosed comment form, which should be returned by September 10, 2009.

You also are invited to attend the second public information open house meeting on this project that will be held Thursday, August 27, from 5:30 to 7:30 p.m. at the Rancho Resort Clubhouse, 15900 South Rancho Resort Boulevard in Sahuarita. During this meeting, TEP will provide information and answer questions about the project. The meeting will be in an open house format with display boards and an opportunity for discussion.

**Contact Information**

To offer comments or request additional information about this project, please call the toll-free project telephone line at (866) 632-5944 or visit TEP's Web site at [www.tep.com](http://www.tep.com).







# Rosemont 138kV Transmission Line Project

Comment Form #2

August 2009

We welcome your comments on the Rosemont 138kV Transmission Line Project. While public comments will be incorporated throughout the planning process, please take a few minutes to answer the following questions and return this form by September 18, 2009 to ensure that your comments will be incorporated during this phase. Comments will be accepted by mail, fax at (602) 956-4374, or through the project Web site at [www.tep.com](http://www.tep.com).

**1. Please provide your name and address:**

Name \_\_\_\_\_

Address \_\_\_\_\_

City, State \_\_\_\_\_

Zip Code \_\_\_\_\_

**2. Please check the appropriate box below:**

- ☐ I'm already on the mailing list  
☐ Please add me to the mailing list  
☐ Please remove me from the mailing list

**3. How did you learn about the project?**

- ☐ Project Web site      ☐ Word of Mouth  
☐ Newsletter Mailing      ☐ Other  
☐ Media

**4. Are you a resident in the project study area?**

- ☐ Yes      ☐ No

**5. If not, please indicate any affiliation that has led your interest in this project.**

- ☐ Agency      ☐ Landowner  
☐ City or Town      ☐ Other  
☐ Developer

**6. Which preliminary alternative link(s) do you prefer?  
(Please refer to link number(s) on the map.)**

\_\_\_\_\_

**7. What factors from the list below influence your preference for these preliminary alternative link(s)?**

- ☐ Land Use      ☐ Property Values  
☐ Scenic/Visual/Landscape      ☐ Cultural/Historic  
☐ Recreation      ☐ Other  
☐ Biological

Explanation \_\_\_\_\_

\_\_\_\_\_

**8. Which preliminary alternative link(s) do you NOT prefer? (Please refer to link number(s) on the map.)**

\_\_\_\_\_

**9. What factors from the list below influence your opposition to these preliminary alternative link(s)?**

- ☐ Land Use      ☐ Property Values  
☐ Scenic/Visual/Landscape      ☐ Cultural/Historic  
☐ Recreation      ☐ Other  
☐ Biological

Explanation \_\_\_\_\_

\_\_\_\_\_

**10. Please provide any additional comments about the preliminary alternative links:**

\_\_\_\_\_  
\_\_\_\_\_  
\_\_\_\_\_

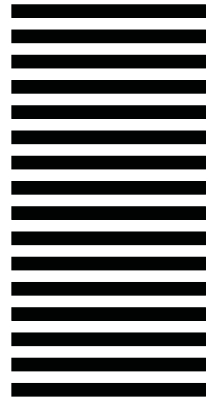
**11. Please provide any additional comments regarding the overall project:**

\_\_\_\_\_  
\_\_\_\_\_  
\_\_\_\_\_

\* Please attach additional pages, if necessary. You also may send additional comments or questions to the address or Web site listed on this form.



NO POSTAGE  
NECESSARY  
IF MAILED  
IN THE  
UNITED STATES



**BUSINESS REPLY MAIL**

FIRST-CLASS MAIL PERMIT NO. 400 PHOENIX, AZ

POSTAGE WILL BE PAID BY ADDRESSEE

**EPG INC  
4141 N 32ND ST STE 102  
PHOENIX AZ 85018-9960**



4141 NORTH 32<sup>ND</sup> STREET  
SUITE 102  
PHOENIX, AZ 85018

FIRST-CLASS MAIL  
PRESORTED  
U.S. POSTAGE PAID  
WORLD MARKETING

## IMPORTANT PUBLIC INFORMATION OPEN HOUSE NOTICE

PARA INFORMACIÓN EN ESPAÑOL, LLAME AL (866) 632-5944



## Rosemont 138kV Transmission Line Project

### — PLEASE ATTEND THE UPCOMING — PUBLIC INFORMATION OPEN HOUSE

**April 13, 2010  
5:30 – 8:30 p.m.**

*(including presentation and question-and-answer session 6:30-7:00 p.m.)*

**Corona Foothills Middle School  
16705 South Houghton Road  
Corona de Tucson, Arizona 85641**

**April 14, 2010  
5:30 – 8:30 p.m.**

*(including presentation and question-and-answer session 6:30-7:00 p.m.)*

**Quail Creek Madera Clubhouse  
1100 North Eagle Hollow Road  
Green Valley, Arizona 85614**



## Rosemont 138kV Transmission Line Project Project Newsletter #3 March 2010

### Introduction and Project Summary

This is the third in a series of newsletters concerning Rosemont Copper Company's (Rosemont) request to Tucson Electric Power (TEP) to provide power to Rosemont's proposed operations in the Santa Rita Mountains southeast of Tucson.

If Rosemont secures approval for its proposed operations, a 138 kilovolt (kV) line would initially be built from an existing 46kV transmission line to the proposed Rosemont Substation to provide power for construction of the Rosemont operations facilities. Because that line is not adequate to provide power for Rosemont's long-term operations, a separate 138kV transmission line would be built, linking the Rosemont Substation to a proposed switchyard/substation tied to TEP's 138kV transmission system. Depending upon the final route selected, the route for the separate 138kV line could incorporate the transmission line and electrical facilities built to provide power for the construction of the Rosemont operations facilities.

### Environmental and Engineering Studies

TEP and its consultant, Environmental Planning Group (EPG), reviewed agency, stakeholder, and public input, as well as environmental resource data collected for the project area to develop proposed routes for the project. Areas or resources identified as more sensitive (less desirable) and areas identified as opportunities (more desirable) for a transmission line route were considered in identifying these alternative routes.

Several preliminary line segments, or "links," were initially identified throughout the project study area. These links were first shown to the public and agencies for review and comment in July 2009. TEP has been gathering feedback and continuing studies on the links since that time. New links have been identified for analysis based on public comments and ongoing studies.

A detailed environmental analysis has been conducted for each of the preliminary links. This analysis includes (1) environmental resources; (2) agency, stakeholder, and public comments; (3) engineering and design of the facilities; (4) the constructability of a route; (5) the ability to obtain right-of-way; and (6) the overall cost of building the new facilities.

### Transmission Line Route Alternatives

Preliminary links with minimal environmental impacts that meet engineering requirements have been combined to form the preliminary transmission line route alternatives shown on the map inside. Each route would link a proposed 138kV switchyard/substation and TEP's 46kV system to the proposed Rosemont Substation. The routes were created after a review of human, natural, and cultural resources throughout the project area, as well as the public input received concerning this project and engineering/design considerations. **Please note that all alternative routes are preliminary and may be modified based on additional regulatory, agency, stakeholder, and public input as well as engineering and design considerations.**

After gathering feedback on these preliminary routes from agencies, the stakeholder group, and the public, TEP will prepare final alternative routes for submission to the Arizona Corporation Commission (ACC).

### Public Comments Received

Since July, TEP has received a variety of comments about this project from representatives of local agencies, members of the project stakeholder group, and the general public. These comments were submitted by mail, fax, telephone, through the project website, and in person at public open house meetings.

While the majority of the comments came from residents in the project study area, some comments were received from landowners who reside outside its boundary.

Some comments expressed concerns about potential impacts to residential views and property values, cultural resources, and the ecosystem within the study area boundary, including the Santa Rita Experimental Range. Other comments suggested locating the transmission line in open desert areas within the experimental range to minimize impacts to existing and future land uses included in general plans of Pima County and other local planning jurisdictions.

When boundaries were redrawn last year, some privately owned properties were removed from the project study area.

Some of those landowners asked if they would still receive project newsletters and have an opportunity to comment on the project; the answer is yes to both. The area included in the environmental and engineering studies was reduced in the summer of 2009, after TEP settled on serving Rosemont's energy needs from the proposed 138kV switchyard/substation (see map). However, TEP's mailing list for project communications was not reduced, and TEP continues to welcome feedback from all members of the public, including those living outside the study area.

Others wondered if TEP has a preferred location for the proposed transmission facilities. At this time, TEP does not; however, this siting process is intended to identify a preferred location for an environmentally compatible transmission line route that would meet the purpose and need for the project, while considering public and agency input, engineering constraints, and cost. TEP has not ranked the preliminary transmission line routes displayed in this newsletter, and will not do so until comments are received from jurisdictional representatives, the stakeholder group, and the general public.

Project Schedule

TEP is seeking public input on the alternative routes and other aspects of this project. Please take a moment to share your thoughts using the enclosed comment form, which

should be returned by May 7, 2010. An online public comment form is also available on the project website at [www.tep.com/company/news/rosemont](http://www.tep.com/company/news/rosemont). After considering stakeholder and public input and making any appropriate revisions to the project plan, TEP will begin preparations to file a Certificate of Environmental Compatibility (CEC) application with the ACC in May 2010.

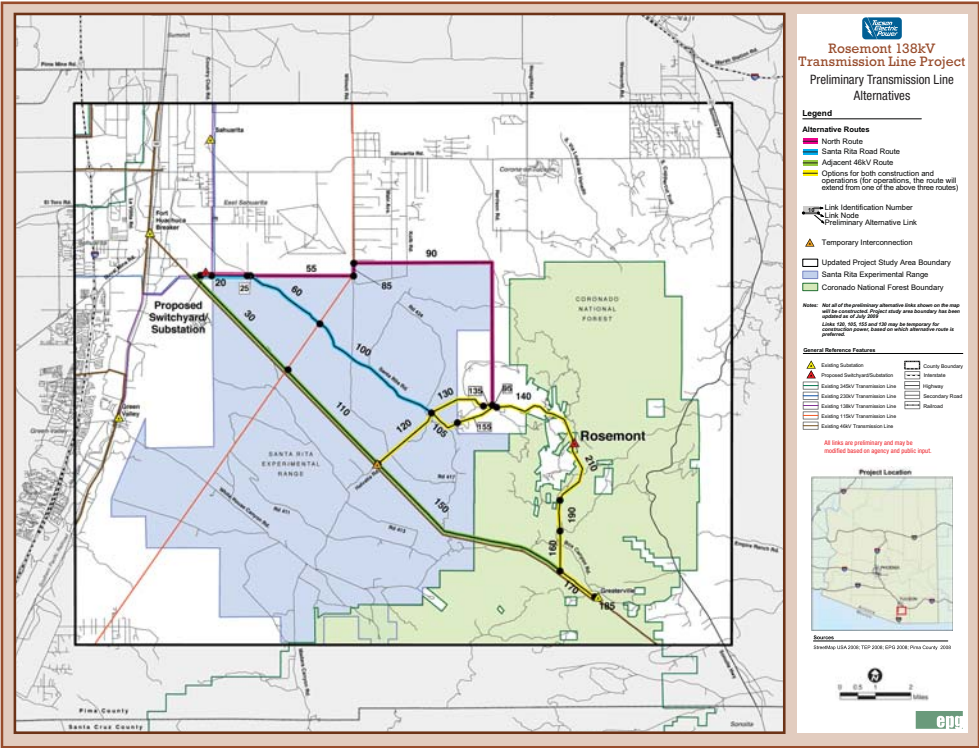
The CEC application will include a preferred route and alternative route(s) for review by the Arizona Power Plant and Transmission Line Siting Committee. This committee is responsible for issuing a CEC that will be available for final review and approval by the ACC. Hearings before the committee and the ACC are open to the public and will be announced on the TEP and ACC websites.

Public Participation

TEP invites you to attend one of two public open house meetings that will be held April 13, 2010 at Corona Foothills Middle School, and April 14, 2010 at Quail Creek Madera Clubhouse, to review and comment on the identified alternative routes. You may attend any time between 5:30 and 8:30 p.m. to view the preliminary route alternatives, talk individually with project team members, and offer feedback. A brief, formal presentation and question-and-answer session will be held from 6:30 to 7:00 p.m. each night.

Contact Information

To offer comments or request additional information about this project, please call the toll-free project telephone line at (866) 632-5944, or visit the TEP website, [www.tep.com/company/news/rosemont](http://www.tep.com/company/news/rosemont).



	TASK 1 Siting Criteria, Define Study Area, and Secondary Data Collection	TASK 2 Opportunities/Constraints Analysis and Link Alternatives Identification	TASK 3 Detailed Inventory and Link Alternatives Assessment	TASK 4 Route Alternatives Selection and Resource Surveys	TASK 5 Preparation and Filing of CEC Application	TASK 6 CEC Hearings
PLANNING PROCESS						
PUBLIC PARTICIPATION ACTIVITIES	• Community leader and elected official briefings • Project fact sheet	• Newsletters #1 and #2 • Public open house meetings #1 and #2	• Ongoing activities	• Newsletter #3 • Public open house meeting #3	• Ongoing activities	• Public hearings before the Arizona Power Plant and Transmission Line Siting Committee and ACC
ESTIMATED TIMELINE	2008 - 1 <sup>st</sup> Quarter 2009	1 <sup>st</sup> - 3 <sup>rd</sup> Quarter 2009	3 <sup>rd</sup> - 4 <sup>th</sup> Quarter 2009	4 <sup>th</sup> - 2 <sup>nd</sup> Quarter 2010 WE ARE HERE	1 <sup>st</sup> - 2 <sup>nd</sup> Quarter 2010	2 <sup>nd</sup> - 3 <sup>rd</sup> Quarter 2010



# Rosemont 138kV Transmission Line Project

Comment Form #3

March 2010

We welcome your comments on the Rosemont 138kV Transmission Line Project. While public comments will be incorporated throughout the planning process, please take a few minutes to answer the following questions and return this form by May 7, 2010 to ensure that your comments will be incorporated during this phase. Comments will be accepted by mail, fax at (602) 956-4374, or through the project Web site at [www.tep.com](http://www.tep.com).

**1. Please provide your name and address:**

Name \_\_\_\_\_

Address \_\_\_\_\_

City, State \_\_\_\_\_

Zip Code \_\_\_\_\_

**2. Please check the appropriate box below regarding your status on our mailing list:**

- ☐ I'm already on the mailing list  
☐ Please add me to the mailing list  
☐ Please remove me from the mailing list

**3. How did you learn about the project?**

- ☐ Project Web site      ☐ Word of Mouth  
☐ Newsletter Mailing      ☐ Other  
☐ Media

**4. Are you a resident in the project study area?**

- ☐ Yes      ☐ No

**5. If not, please indicate any affiliation that has led your interest in this project.**

- ☐ Agency      ☐ Landowner  
☐ City or Town      ☐ Other  
☐ Developer

**6. Which alternative route do you prefer? Or, which link(s) (noted by number) do you prefer?**

\_\_\_\_\_

**7. What factors from the list below influence your preference for the alternative route?**

- |  |  |
|--|--|
| <input type="checkbox"/> Land Use                | <input type="checkbox"/> Property Values   |
| <input type="checkbox"/> Scenic/Visual/Landscape | <input type="checkbox"/> Cultural/Historic |
| <input type="checkbox"/> Recreation              | <input type="checkbox"/> Other             |
| <input type="checkbox"/> Biological              |  |

**8. Which alternative route do you NOT prefer? Or, which link(s) (noted by number) do you NOT prefer?**

\_\_\_\_\_

**9. What factors from the list below influence your opposition to the alternative route?**

- |  |  |
|--|--|
| <input type="checkbox"/> Land Use                | <input type="checkbox"/> Property Values   |
| <input type="checkbox"/> Scenic/Visual/Landscape | <input type="checkbox"/> Cultural/Historic |
| <input type="checkbox"/> Recreation              | <input type="checkbox"/> Other             |
| <input type="checkbox"/> Biological              |  |

**10. What additional comments would you like to make related to the alternative routes displayed and your preference concerns?**

\_\_\_\_\_  
\_\_\_\_\_  
\_\_\_\_\_

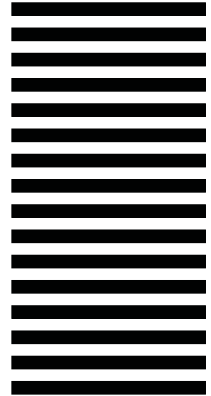
**11. What additional comments do you have regarding the overall project?**

\_\_\_\_\_  
\_\_\_\_\_  
\_\_\_\_\_

Please attach additional pages, if necessary. You also may send additional comments or questions to the address or Web site listed on this form.



NO POSTAGE  
NECESSARY  
IF MAILED  
IN THE  
UNITED STATES



**BUSINESS REPLY MAIL**

FIRST-CLASS MAIL PERMIT NO. 400 PHOENIX, AZ

POSTAGE WILL BE PAID BY ADDRESSEE

**EPG INC  
4141 N 32ND ST STE 102  
PHOENIX AZ 85018-9960**



  
4141 NORTH 32<sup>ND</sup> STREET  
SUITE 102  
PHOENIX, AZ 85018

FIRST-CLASS MAIL  
PRESORTED  
U.S. POSTAGE PAID  
WORLD MARKETING

## IMPORTANT PUBLIC INFORMATION OPEN HOUSE NOTICE

PARA INFORMACIÓN EN ESPAÑOL, LLAME AL (866) 632-5944



## Rosemont 138kV Transmission Line Project

### — PLEASE ATTEND THE UPCOMING — PUBLIC INFORMATION OPEN HOUSE

**November 17, 2010**

**5:30 – 8:00 p.m.**

*(including presentation and question-and-answer session 6:30-7:00 p.m.)*

**Rancho Resort Clubhouse  
15900 South Rancho Resort Boulevard  
Sahuarita, Arizona 85629**



## Rosemont 138kV Transmission Line Project

Project Newsletter #4

November 2010

### Project Update

This newsletter provides an update on Tucson Electric Power's (TEP) plan to provide power to Rosemont Copper Company's proposed mining operations in the Santa Rita Mountains southeast of Tucson.

TEP is planning to build a 138 kilovolt (kV) line to provide power for the long-term operation of Rosemont's facilities. This transmission line would link the planned Rosemont Substation to a proposed switchyard tied to TEP's 138kV transmission system.

The final route for the 138kV line could incorporate the initial power line and electrical facilities needed to provide power to build Rosemont's facilities. Rosemont also has informed TEP that it might make other arrangements for securing construction power.

TEP has identified a preferred route and four alternative routes for the project that may be submitted to the Arizona Corporation Commission (ACC). The routes, which are shown on a map in this newsletter, were chosen from among 11 potential routes contained in 3 route families. A map of those routes was included in the previous project newsletter, distributed in March 2010, and was presented at public open house meetings held April 13 and 14, 2010 (this map is still available on the project website).

Each route would link a proposed 138kV switchyard/substation and the proposed Rosemont Substation. The preferred and alternative routes were selected based on agency and public comment and additional analysis that included overall environmental compatibility, engineering, construction concerns, and Rosemont's operating needs. Each analysis considered and compared details (e.g., ease of access, proximity to linear features, etc.) of the alternative route families that could minimize potential environmental impacts and accommodate the construction, operation, and maintenance of the proposed project. **Please note that all alternative routes are conceptual and may be modified**

based on additional agency, stakeholder, and public input, as well as engineering and design considerations.

The alternative routes TEP may carry forward would generally follow the path of a proposed water pipeline or replace the existing 46kV line with new facilities that could accommodate both the 46kV line and the proposed 138kV line. Since a majority of the routes would be co-located with these facilities, ground disturbance and impacts to resources would be reduced.

### Project Schedule

TEP plans to apply for a Certificate of Environmental Compatibility (CEC) from the ACC in the first quarter of 2011. The application will be reviewed by the Arizona Power Plant and Transmission Line Siting Committee. This committee is responsible for making recommendations to the ACC, which will issue a final decision on the project. All hearings before the committee and ACC are open to the public and will be announced on the TEP and ACC websites.

### Public Participation

TEP invites you to attend a public open house meeting on November 17, 2010, at the Rancho Resort Clubhouse, 15900 South Rancho Resort Boulevard in Sahuarita from 5:30-8:00 p.m., to review the preferred and alternative routes that may be carried forward into the CEC application. A brief presentation will be given at 6:30 p.m. You may use this opportunity to view the alternative routes, talk individually with project team members, and offer feedback. In addition to the public open house, comments will be accepted through the online comment form or by telephone, until December 6. More opportunities for public participation will be offered at the hearings held by the siting committee, including a public comment period on the first day of hearings (date to be determined). TEP's project website ([www.tep.com/company/news/rosemont](http://www.tep.com/company/news/rosemont)) will provide information on future opportunities for public participation.

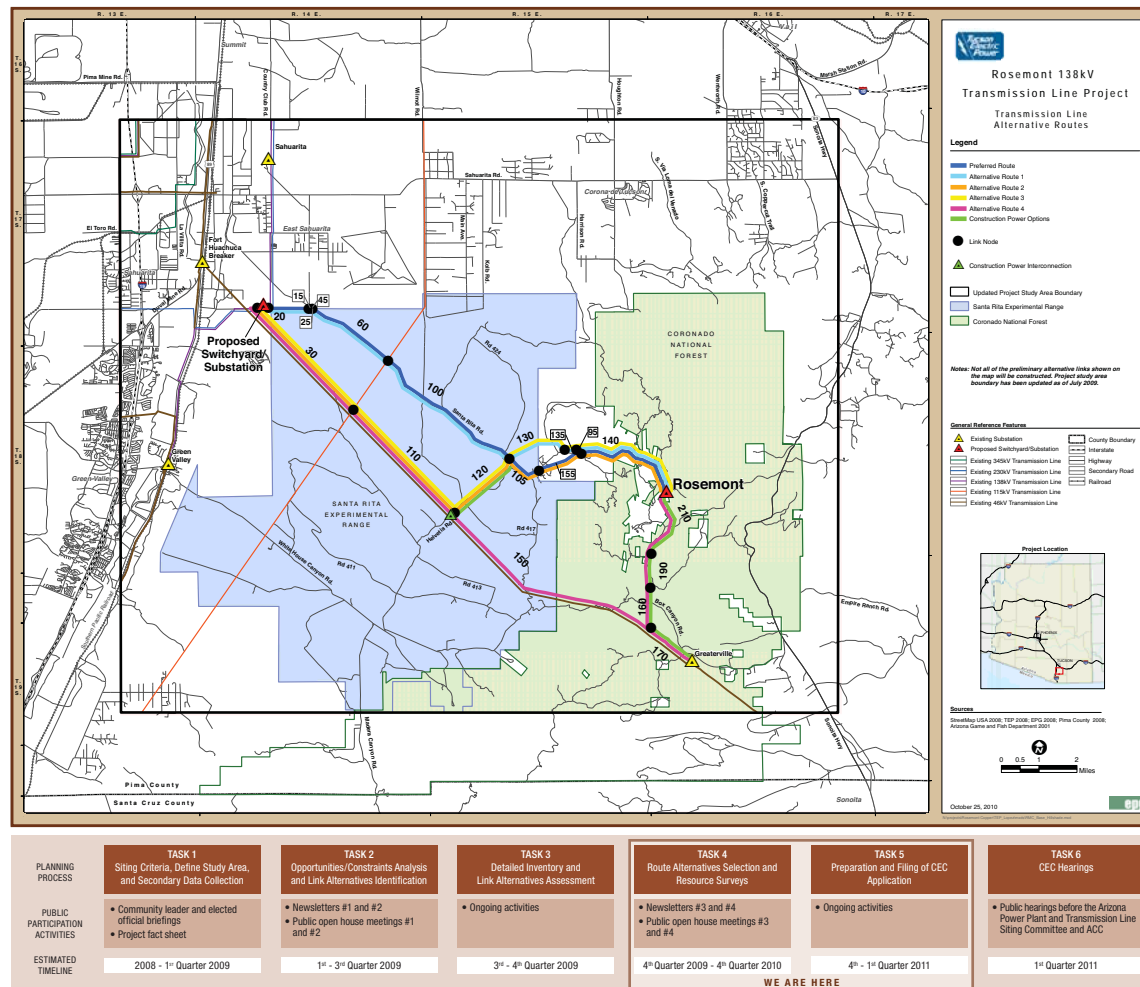


To offer comments or request additional information about this project, please call the toll-free project telephone line at (866) 632-5944, or visit the TEP website, [www.tep.com/company/news/rosemont](http://www.tep.com/company/news/rosemont).

## PUBLIC INFORMATION OPEN HOUSE

**November 17, 2010**  
**5:30 – 8:00 p.m.**  
*(including presentation and question-and-answer session 6:30-7:00 p.m.)*

**Rancho Resort Clubhouse**  
**15900 S. Rancho Resort Blvd.**  
**Sahuarita, Arizona 85629**





# Rosemont 138kV Transmission Line Project

Comment Form #4

November 2010

We welcome your comments on the Rosemont 138kV Transmission Line Project. While public comments will be incorporated throughout the planning process, please take a few minutes to answer the following questions and return this form by December 6, 2010 to ensure that your comments will be incorporated during this phase. Comments will be accepted by mail, fax at (602) 956-4374, or through the project Web site at [www.tep.com/company/news/rosemont](http://www.tep.com/company/news/rosemont).

**1. Please provide your name and address:**

Name \_\_\_\_\_

Address \_\_\_\_\_

City, State \_\_\_\_\_

Zip Code \_\_\_\_\_

**2. Please check the appropriate box below regarding your status on our mailing list:**

- ☐ I'm already on the mailing list
- ☐ Please add me to the mailing list
- ☐ Please remove me from the mailing list

**3. How did you learn about the project?**

- ☐ Project Web site
- ☐ Word of mouth
- ☐ Newsletter mailing
- ☐ Other
- ☐ Media

**4. Are you a resident in the project study area?**

- ☐ Yes
- ☐ No

**5. Please indicate any affiliation that has led to your interest in this project.**

- ☐ Agency
- ☐ Landowner
- ☐ City or Town
- ☐ Other
- ☐ Developer

---

**6. TEP's preferred route generally follows Santa Rita Road and includes the construction option between Rosemont Substation to Greaterville. What comments do you have regarding this preferred route?**

---

---

---

---

**7. Please provide any additional comments you may have regarding the transmission line project?**

---

---

---

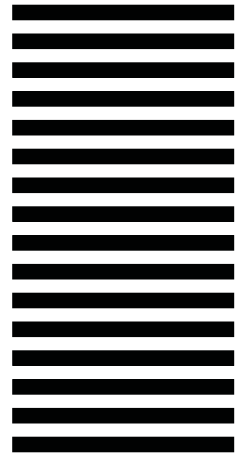
---

---

Please attach additional pages, if necessary. You also may send additional comments or questions to the address or Web site listed on this form.



NO POSTAGE  
NECESSARY  
IF MAILED  
IN THE  
UNITED STATES



**BUSINESS REPLY MAIL**  
FIRST-CLASS MAIL    PERMIT NO. 400    PHOENIX, AZ

POSTAGE WILL BE PAID BY ADDRESSEE

**EPG INC  
4141 N 32ND ST STE 102  
PHOENIX AZ 85018-9960**

