



DRAFT

Rosemont 138-kV Transmission Line Project Future Land Use

Legend



Land Use

- Agriculture
- Commercial
- Industrial
- Military
- Mixed Use
- Parks/Preservation
- Public Lands
- Public/Quasi-Public
- Recreation
- Residential
- School/Educational Facilities
- Utilities
- Vacant/Undeveloped

Status

- Plat Approved
- Zoning Approved
- Conceptual/General/Comprehensive Plan

Note: Non-status land uses are existing

General Reference Features

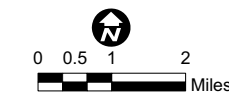
- Existing Substation
- Proposed Rosemont Substation
- Existing 345-kV Transmission Line
- Existing 230-kV Transmission Line
- Existing 138-kV Transmission Line
- Existing 115-kV Transmission Line
- Existing 46-kV Transmission Line
- Gas Pipeline (12" or greater)
- Gas Pipeline (Less than 12")
- National Forest Boundary
- Project Area Boundary
- County Boundary
- Interstate
- Highway
- Secondary Road
- Railroad
- Lake
- River / Wash
- Township Boundary
- Section Boundary

Project Location

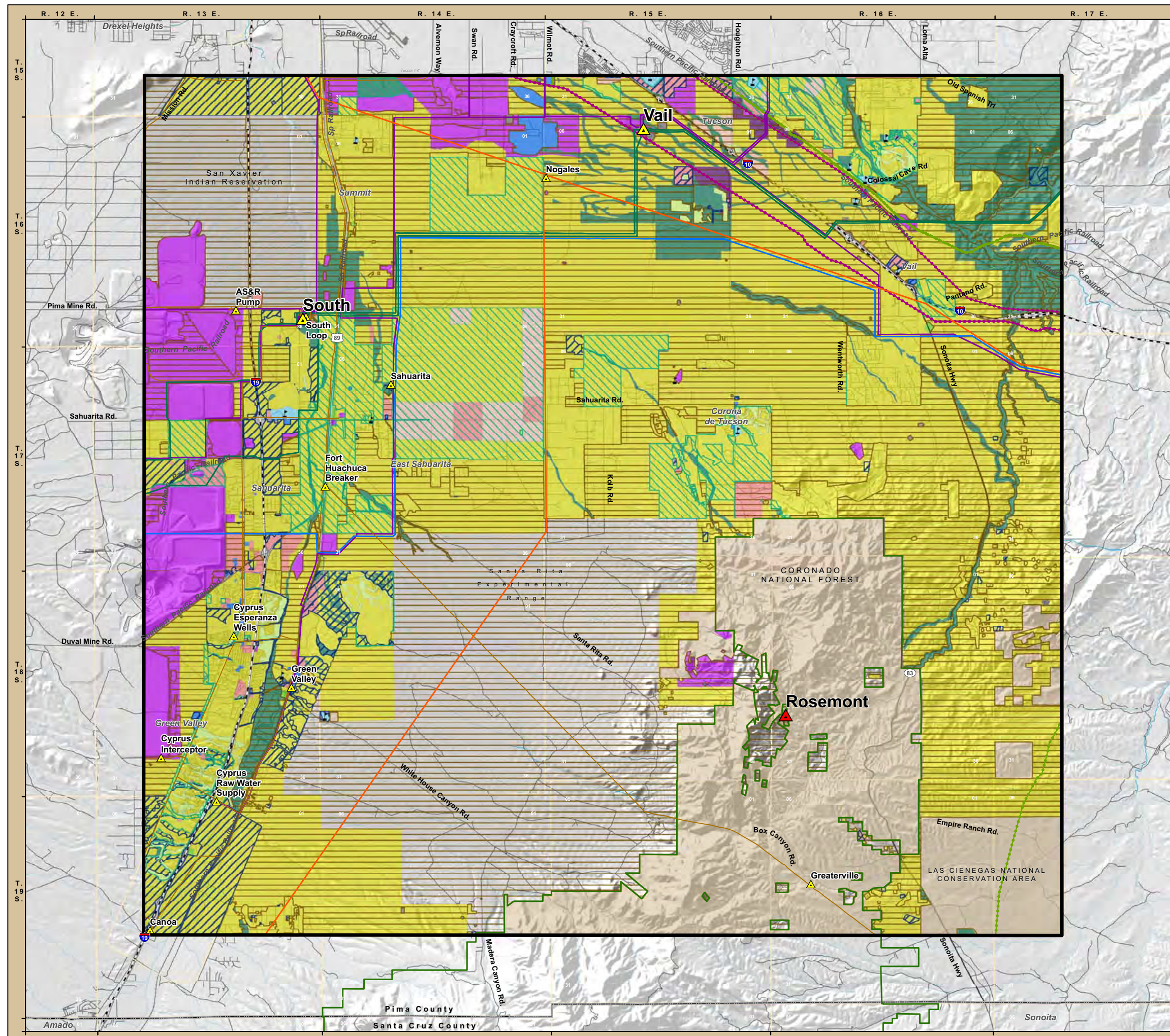


Sources

StreetMap USA 2008; TEP 2008; Sahuarita, 2008; Houghton Area Master Plan, 2005; EPG, 2008; Pima County, 2008; City of Tucson 2008.



Working Draft
March 20, 2009



N:\projects\Rosemont Copper\TEP_Logos\mxd\PMC_Base_Hatched_92.mxd